

AGENDA
SHAKOPEE PUBLIC UTILITIES COMMISSION
REGULAR MEETING
August 7, 2017

1. **Call to Order** at 5:00pm in the SPUC Service Center, 255 Sarazin Street.
2. **Approval of Minutes**
3. **Communications**
4. **Approve the Agenda**
5. **Approval of Consent Business**
6. **Bills: Approve Warrant List**
7. **Liaison Report**
8. **Reports: Water Items**
 - 8a) Water System Operations Report – Verbal
 - 8b) Resn. #1166 – Setting the Amount of the Trunk Water Charge, Approving of Its Collection and Authorizing Water Service to Certain Property
Described as: West Vierling Acres Third Addition
 - 8c) Resn. #1167 – Setting the Amount of the Trunk Water Charge, Approving of Its Collection and Authorizing Water Service to Certain Property
Described as: Windermere
 - 8d) Riverview Booster Station – Bid Results and Award
9. **Reports: Electric Items**
 - 9a) Electric System Operations Report – Verbal
 - 9b) July 2017 MMPA Board Meeting Public Summary
 - 9c) Dean Lake/Shakopee Substations Landscaping – Bid Results and Award
 - 9d) CR 16/17th Avenue Street Lighting Discussion
10. **Reports: Human Resources**
11. **Reports: General**
 - 11a) Daffron iXP Upgrade Project Update – Verbal
 - 11b) Proposed 2018 Budget Planning Schedule
 - C=> 11c) Website Analytics
12. **New Business**
13. **Tentative Dates for Upcoming Meetings**

- Mid Month Meeting	--	August 21 (MMUA Conference)
- Regular Meeting	--	September 5 (Tuesday)
- Mid Month Meeting	--	September 18
- Regular Meeting	--	October 2
14. **Adjourn** to 8/21/17 at the SPUC Service Center, 255 Sarazin Street

MINUTES
OF THE
SHAKOPEE PUBLIC UTILITIES COMMISSION
(Regular Meeting)

President Amundson called the regular session of the Shakopee Public Utilities Commission to order at the Shakopee Public Utilities meeting room at 5:00 P.M., July 17, 2017.

MEMBERS PRESENT: Commissioners Joos, Amundson, Helkamp, Hennen and Weyer. Also present, Liaison Mocol, Utilities Manager Crooks, Finance Director Schmid, Planning & Engineering Director Adams, Line Superintendent Drent, Water Superintendent Schemel and Marketing/Customer Relations Director Walsh.

Utilities Manager Crooks introduced City Councilor Kathy Mocol as our new Council Liaison.

Motion by Joos, seconded by Helkamp to approve the minutes of the June 19, 2017 Commission meeting. Motion carried.

There were no Communication items to report.

President Amundson offered the agenda for approval.

Motion by Helkamp, seconded by Weyer to approve the agenda as presented. Motion carried.

Motion by Helkamp, seconded by Joos to approve the Consent Business agenda as presented. Motion carried.

President Amundson stated that the Consent Items were: Item 8c: Quarterly Nitrate Results and Item 8d: Water Production Dashboard.

The warrant listing for bills paid July 3, 2017 was presented.

Motion by Helkamp, seconded by Hennen to approve the warrant listing dated July 3, 2017 as presented. Motion carried.

The warrant listing for bills paid July 17, 2017 was presented.

Motion by Joos, seconded by Helkamp to approve the warrant listing dated July 17, 2017 as presented. Motion carried.

Liaison Mocol presented her report. The Community Center pool will open soon with a Grand Opening in September. Redevelopment of downtown is continuing with several projects planned.

Water Superintendent Schemel provided a report of current water operations. An update of the Street Reconstruction Project was provided. Forty two water services still remain to have new metering installed. Ductile watermain and hydrant installation has been completed.

Planning and Engineering Director Adams reviewed a request from the City of Prior Lake to provide temporary water service to the Ridge Haven development, north of Whispering Oaks. This would involve a joint powers agreement and would provide temporary water for twenty five homes for up to two years.

Motion by Helkamp, seconded by Weyer to allow SPU Staff to continue in the negotiations for temporary water as part of the Villa home portion of Phase 1 of the Ridge Haven development in the City of Prior Lake. Motion carried.

Item 8c: Quarterly Nitrate Results was received under Consent Business.

Item 8d: Water Production Dashboard was received under Consent Business.

Line Superintendent Drent provided a report of current electric operations. Seven electric outages were reviewed. An update on construction projects was provided, as was an update to the new SCADA system.

Mr. Crooks read the June 2017 MMPA Board Meeting Public Summary into the record.

The West Monroe Partners Smart Grid Business Case and Technology Roadmap Report was reviewed by Mr. Crooks. Discussion centered on AMR metering and estimated costs for initial budgeting purposes.

Customer Relations/Marketing Director Walsh provided an update to the Daffron iXP Upgrade Project. The project is scheduled to "go live" August 21.

Finance Director Schmid reviewed the June 2017 Financial Results.

The tentative commission meeting dates of August 7 and August 21 (MMUA Conference) were noted.

Motion by Joos, seconded by Hennen to adjourn to the August 7, 2017 meeting. Motion carried.



Commission Secretary: John R. Crooks

RESOLUTION #1166

A RESOLUTION SETTING THE AMOUNT
OF THE TRUNK WATER CHARGE, APPROVING OF ITS COLLECTION
AND AUTHORIZING WATER SERVICE TO CERTAIN PROPERTY
DESCRIBED AS:

WEST VIERLING ACRES THIRD ADDITION

WHEREAS, a request has been received for City water service to be made available to certain property, and

WHEREAS, the collection of the Trunk Water Charge is one of the standard requirements before City water service is newly made available to an area, and

WHEREAS, the standard rate to be applied for the Trunk Water Charge has been set by separate Resolution,

NOW THEREFORE, BE IT RESOLVED, that the amount of the Trunk Water Charge is determined to be \$15,846.36 based on 5.16 net acres, and that collection of the Trunk Water Charge is one of the requirements to be completed prior to City water service being made available to that certain property described as:

Lot 1, Block 1, WEST VIERLING ACRES THIRD ADDITION

BE IT FURTHER RESOLVED, that all things necessary to carry out the terms and purpose of this Resolution are hereby authorized and performed.

Passed in regular session of the Shakopee Public Utilities Commission, this 7th day of August, 2017.

Commission President: Deb Amundson

ATTEST:

Commission Secretary: John R. Crooks

RESOLUTION #1167

A RESOLUTION SETTING THE AMOUNT
OF THE TRUNK WATER CHARGE, APPROVING OF ITS COLLECTION
AND AUTHORIZING WATER SERVICE TO CERTAIN PROPERTY
DESCRIBED AS:

WINDERMERE

WHEREAS, a request has been received for City water service to be made available to certain property, and

WHEREAS, the collection of the Trunk Water Charge is one of the standard requirements before City water service is newly made available to an area, and

WHEREAS, the standard rate to be applied for the Trunk Water Charge has been set by separate Resolution,

NOW THEREFORE, BE IT RESOLVED, that the amount of the Trunk Water Charge is determined to be \$114,855.40 based on 37.4 net acres, and that collection of the Trunk Water Charge is one of the requirements to be completed prior to City water service being made available to that certain property described as:

Lots 1-17, Block 1, WINDERMERE;

Lots 1-8, Block 2, WINDERMERE;

Lots 1-39, Block 3, WINDERMERE;

Lot 1, Block 4, WINDERMERE;

Outlot A, WINDERMERE;

Outlot B, WINDERMERE;

Outlot C, WINDERMERE;

The portion of Outlot F not designated as park, WINDERMERE;

Outlot I, WINDERMERE

BE IT FURTHER RESOLVED, that all things necessary to carry out the terms and purpose of this Resolution are hereby authorized and performed.



Passed in regular session of the Shakopee Public Utilities Commission, this 7th day of August, 2017.

Commission President: Deb Amundson

ATTEST:

Commission Secretary: John R. Crooks

**SHAKOPEE PUBLIC UTILITIES
MEMORANDUM**

TO: John R. Crooks, Utilities Manager 
FROM: Lon R. Schemel, Water Superintendent 
SUBJECT: **Bid Award for Riverview Booster Station**
DATE: August 2, 2017

Attached to this memo is the recommendation from our consultant, Sambatek, to accept Municipal Builders, Inc. as the low bidder for the construction of a hydro pneumatic booster station. John Karwacki from Sambatek will be present during the August 7, 2017 Commission meeting to answer specific questions and to make bid recommendations to the members of the Commission.

Also attached to this memo are the bid tabulation results for the bid, which took place August 2, 2017 at 10:00am in the Commission meeting room.

August 7, 2017

Honorable Chairman and Members of the Commission
c/o Lon Schemel, Water Superintendent
Shakopee Public Utility
255 Sarazin Street
Shakopee, MN 55379

Subject: Contractor Bid Recommendation
Riverview Booster Station, SPU, Shakopee

Dear Mr. Schemel,

On Wednesday August 3, 2017 a bid opening was held for the Riverview Booster Station. Seven bids were received and Municipal Builders, Inc. was the apparent low bidder:

The three lowest bids received are listed below:

Municipal Builders, Inc.	\$1,447,400.00
Magney Construction	\$1,507,595.00
Rice Lake Construction Group	\$1,559,800.00

All the bids were totaled and checked and the Municipal Builders, Inc. bid was verified as the low bid. Submittal documentation was reviewed including municipal facility experience was found to be acceptable.

The separation between the three bids is representative of a very competitive group of bids and is a good indication of competitive bidding between the three construction companies. The remaining bids ranged from \$1,707,888.00 to \$1,924,049.98 (Refer to attached Bid Opening Tabulation).

The engineer's construction cost estimate was \$57,400 under the low bid construction cost. This difference amount indicates the low bid is reasonable.

Based on our review of the lowest apparent bid the recommendation is to award the Project to Municipal Builders, Inc. for \$1,447,400.00.

Client: Shakopee Public Utility

Date: August 7, 2017

Page 2

Feel free to contact me with any questions and comments.

Sincerely,
Sambatek, Inc.

John Karwacki, PE
Project Engineer

enclosures

BID OPENING TABULATION

PROJECT: Riverview Booster Station

DATE: Wednesday, August 2, 2017

PLACE: SPU Service Center

ENGINEER: Sambatek Inc., John Karwacki

TIME: 10:00 A.M.

OWNER: Shakopee Public Utility

Sambatek, Inc.
12800 28th Whitewater Drive, Suite 300
Minnetonka, Minnesota 55343
(763) 476-6010 (763) 476-8532 fax

Contractor	Addendum Sent	Proposal Guarantee	Total Amount of Bid
Municipal Builders, Inc. 17125 Roanoke Street NW Andover, MN 55304	4	5%	1,447,400.00
Magney Construction, Inc. 1401 Park Road Chanhassen, MN 55317	4	5%	1,507,595.00
Rice Lake Construction Group PO Box 517, County Rd 12 Deerwood, MN 56444	4	5%	1,559,800.00
M. Magnuson Construction Co., Inc. 17551 Barrington Court Minnetonka, MN 55345	4	5%	1,707,888.00
Ebert Construction 23350 County Road 10 Corcoran, MN 55357	4	5%	1,713,952.93
CM Construction Company, Inc. 12215 Nicollet Ave. S. Burnsville, MN 55337	4	5%	1,890,481.50

BID OPENING TABULATION

PROJECT: Riverview Booster Station

DATE: Wednesday, August 2, 2017

PLACE: SPU Service Center


ENGINEER: Sambatek Inc., John Karwacki

TIME: 10:00 A.M.

OWNER: Shakopee Public Utility

Shaw-Lundquist Associates, Inc. 2757 West Service Road St. Paul, MN 55121	4	5%	1,924,049.98
Engineer's Estimate			\$1,389,500

**SHAKOPEE PUBLIC UTILITIES
MEMORANDUM**

TO: SHAKOPEE PUBLIC UTILITIES COMMISSION
FROM: JOHN R. CROOKS, UTILITIES MANAGER 
SUBJECT: JULY 2017 MMPA BOARD MEETING SUMMARY
DATE: AUGUST 3, 2017

The Board of Directors of the Minnesota Municipal Power Agency (MMPA) met on July 25, 2017 at the offices of Shakopee Public Utilities in Shakopee, Minnesota.

It was reported that customer penetration of MMPA's Clean Energy Choice program for residential customers is at 2.1%, with range by member of 5.5% to 0.7%.

The Board discussed the rollout of Clean Energy Choice for Business, which is scheduled for the third quarter.

The status of the renewable projects that the Agency is pursuing was updated.

The Board approved the redemption of MMPA's Series 2007 bonds, in the amount of \$21.6 million. This redemption will save the Agency more than \$13 million in interest expense over twenty years.



Brain Frandle was elected MMPA's Secretary.

The Grand Opening for Shakopee Energy Park was discussed.

The MMPA Annual Report for 2016 was released. It can be found on MMPA's website, www.mmpa.org

SHAKOPEE PUBLIC UTILITIES
MEMORANDUM

9c

TO: John Crooks, Utilities Manager 
FROM: Joseph D. Adams, Planning & Engineering Director 
SUBJECT: Dean Lake and Shakopee Substations Landscaping
DATE: August 2, 2017

ISSUE

Both substation sites need to have landscaping installed per their approved site plans and under a condition of their CUP's from the city of Shakopee.

BACKGROUND

The construction phase of both substations is essentially complete, except for the required landscaping.

DISCUSSION

Bids were opened on July 27th and there were two bids received. The bid evaluation letter report from Leidos' Kevin Favero is attached. Staff concurs with the recommendations in the report.

REQUESTED ACTION

Staff requests the Commission award the landscaping bid to Minnesota Valley Landscaping in the amount of \$38,550 for Option B.

August 2, 2017



Joe Adams
Shakopee Public Utilities
255 Sarazin Street
Shakopee, MN 55379

Subject: Dean Lake & Shakopee Substation Landscaping – Bid Evaluation

Dear Mr. Adams:

SPU has requested bids for landscaping the upgraded Shakopee Substation and Dean Lake Substation. The landscaping includes the installation of coniferous trees to provide screening.

For previous landscape projects at the South Shakopee (1997), Dean Lake (2001), and Pike Lake (2008) substations, techny arborvitae trees were installed to provide screening. The original Dean Lake Substation landscaping was around the perimeter of the substation fence. The current Dean Lake Substation landscaping will be along Eagle Creek Boulevard to screen the access road and entrance to the substation. The City had requested that the Dean Lake Substation gate be screened from view. The above plantings appear to have survived well and are approaching 15 to 20 feet in height.

The City of Shakopee arborist recommended that SPU consider having more than one species of tree to reduce the risk of losing all of the trees if one selected species is subjected to a future disease. Eastern redcedar trees were included in one of the bid options as described below.

For the current bids there are two options as summarized in the table below.

Summary of Landscaping Options				
	Techny Arborvitae		Eastern Redcedar	
	# of Trees	% of Total	# of Trees	% of Total
Option A	55	62.5%	33	37.5%
Option B	88	100%	0	0%

During the pre-bid meeting, both bidders identified below pointed out how well the techny arborvitae are doing and commented that they did not consider the Eastern redcedar trees as hardy for the given soil and climate conditions.

On July 27, SPU received bids for the landscaping work from Minnesota Green and Minnesota Valley Landscaping. The bids are summarized in the table below.

Summary Landscaping Bids (\$)						
	Option A Dean Lake Sub	Option A Shakopee Sub	Option A Total	Option B Dean Lake Sub	Option B Shakopee Sub	Option B Total
Minnesota Green	28,730	23,640	52,370	22,980	20,140	43,120
Minnesota Valley	24,200	15,750	39,950	23,300	15,250	38,550
Difference	4,530	7,890	12,420	(320)	4,890	4,570
% above Minnesota Valley	18.7%	50.1%	31.1%	(1.4%)	32.1%	11.9%

As summarized above, the Minnesota Valley bid was lower than the Minnesota Green bid for both Option A (by \$12,420 or 31.1%) and for Option B (by \$4,570 or 11.9%).

The bid document also included prices for adjusting the quantity of techny arborvitae trees and Eastern redcedar trees and for increasing the number of waterings over the base numbers in the contract as summarized in the table below.

Adjustment to Cost for Adjustment to Base Quantities (\$)			
	Adjustment to number of techny arborvitae (per tree)	Adjustment to number of Eastern redcedar (per tree)	Each additional watering
Minnesota Green	350	600	1,500
Minnesota Valley	225	275	480
Difference	125	325	1,020

As summarized above, the Minnesota Valley cost per tree and per watering is less than the Minnesota Green cost.

Minnesota Valley Landscaping installed the landscaping at Pike Lake Substation and the trees are performing well. The difference in the Minnesota Valley bid between Option A and Option B is \$1,400 or 3.6%. Although Option A provides some species diversity at a relatively low incremental cost, the comments by the two bidders concerning the hardiness of the techny arborvitae are considered to be more important.



Based on the above, contracting with Minnesota Valley Landscaping for the Shakopee Substation and Dean Lake Substation landscaping at a price of \$38,550 for Option B is recommended.

Sincerely,
Leidos Engineering, LLC



Kevin Favero, P.E.
Senior Project Manager

SHAKOPEE PUBLIC UTILITIES
MEMORANDUM

TO: John Crooks, Utilities Manager 
FROM: Joseph D. Adams, Planning & Engineering Director 
SUBJECT: CSAH 16 aka 17th Avenue West of CSAH 15 Proposed Lighting Plan
DATE: August 3, 2017

ISSUE

The current project to construct CSAH 16 aka 17th Avenue west of CSAH 15 includes the attached preliminary lighting plan which requires the Utilities Commission review.

BACKGROUND

The City Council and the Utilities Commission jointly adopted the current street lighting policy, also attached, that among other provisions includes the statement that lighting on County Highways will be reviewed on a case by case basis.

DISCUSSION

17th Avenue was originally constructed as city collector street with collector street level street lighting. The roadway was subsequently turned over to Scott County and is now designated as CSAH 16. The street lighting as originally installed remains in place.

The proposed lighting design for the road extension places lights at closer spacing than prescribed in the policy for arterial and collector streets, 150 feet alternating sides vs. 300 feet. The reason for that near the intersection with CSAH 15 west to station 496 is due to safety and state aid standards for the projected traffic levels. The reason for the closer spacing continuing west from station 496 though is to pattern the spacing after Southbridge Parkway. However, on Southbridge Parkway the light poles are shorter than normal for a collector street which affects the resulting photometric performance and thus shortened the normal spacing between lights on a collector street per policy.

Another factor to consider while reviewing the preliminary lighting design in comparison to Southbridge Parkway is the new lighting standards require LED fixtures which give off more lumens per watt than the previous standard in place on Southbridge Parkway, which are HPS lamps. The existing HPS fixtures on Southbridge Parkway are equivalent to the lower wattage LED fixtures now installed on local streets vs the higher wattage LED fixtures now installed on collector streets. Staff

believes the lighting levels will be inefficiently higher than desired if the proposed design spacing is employed using the new standard LED fixtures and poles. Staff believes a transition zone is appropriate as the roadway is extended west from station 496 through this project and then a decision on the appropriate spacing in future extensions west can be made at that time after evaluating the resulting light levels in this project.

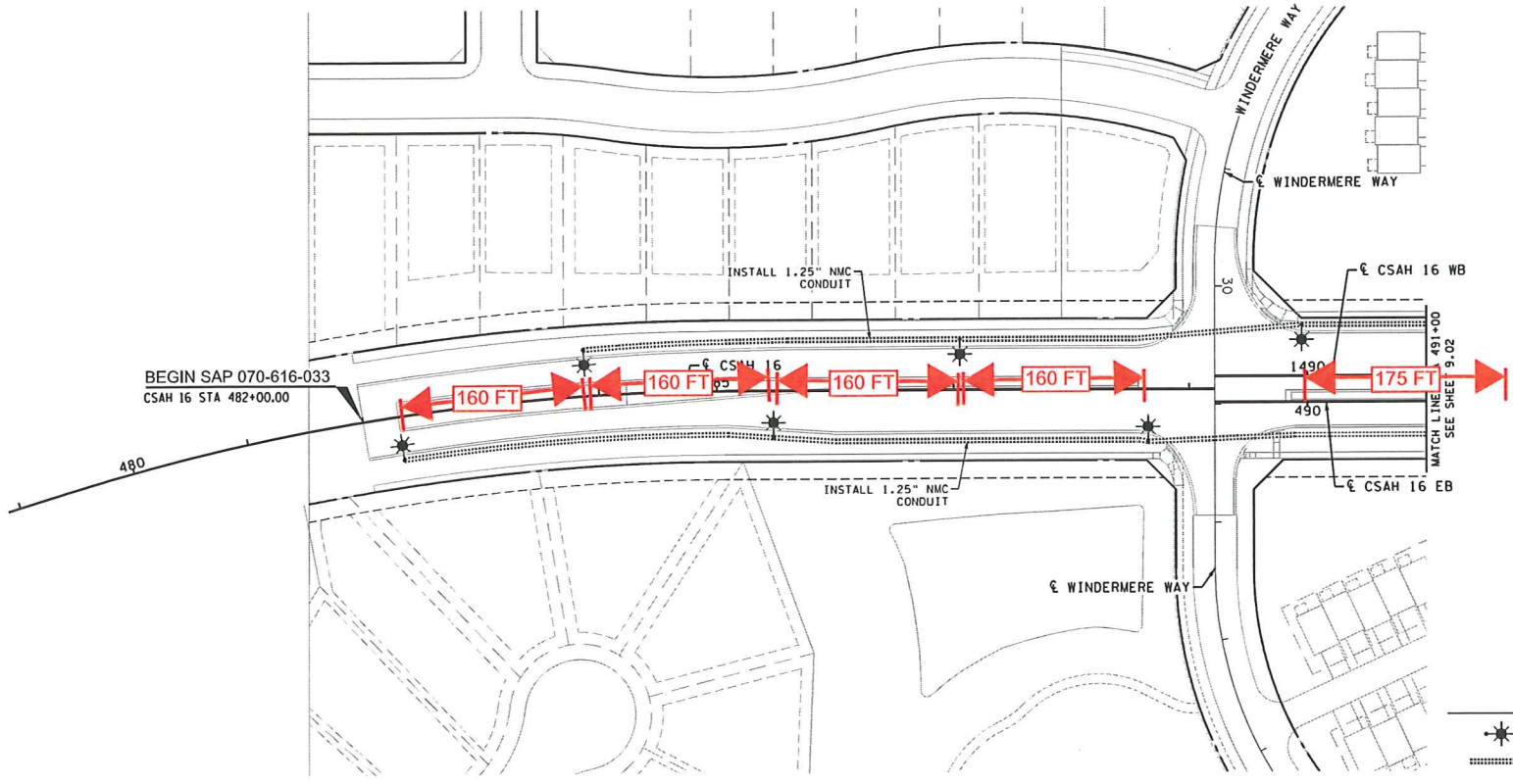
REQUESTED ACTION

Staff requests the Commission approve of street lighting on CSAH 16 aka 17th Avenue to remain consistent with existing road segments across the city, without the necessity of a special lighting district and its consequent special terms.

Staff requests the Commission direct staff to work with the design team on this project to modify the proposed design to adjust the light spacing west from station 496 to transition to the standard spacing for an arterial or collector street as outlined in the policy.

Proposed Design

CSAH 16 (17th Avenue)



- LEGEND**
- STREET LIGHT (INSTALLED BY OTHERS)
 - 1.25" NMC CONDUIT FOR STREET LIGHTING CONTINUOUS INTERDUCT (FURNISHED BY SPUC)

- GENERAL NOTES:**
1. CONDUIT LOCATIONS MAY BE MODIFIED IN THE FIELD BY THE ENGINEER.
 2. CONDUIT WILL BE SUPPLIED BY SPUC AND INSTALLED BY CONTRACTOR.
 3. STREET LIGHT CONDUIT TO BE LOCATED TYPICALLY 2.5' BEHIND BACK-OF-CURB OR AS SHOWN ON THE PLANS BEHIND CURB AND 24" BELOW FINISHED GRADE.
 4. STREET LIGHTS TYPICALLY LOCATED 6' FROM FACE CURB, OR 2.5' FROM TRAIL OR WALK.

PLOTTED/REVISED: 7/25/2017

PATH & FILENAME: K:\01\680\06\Plan\16\680_01.dgn

NO.	DATE	BY	CHK	REVISIONS

Design By DWS	I HEREBY CERTIFY THAT THIS PLAN, SPECIFICATION, OR REPORT WAS PREPARED BY OR UNDER MY DIRECT SUPERVISION AND THAT I AM A DULY LICENSED PROFESSIONAL ENGINEER UNDER THE LAWS OF THE STATE OF MINNESOTA.
Plan By CWK	
Checked By DMK	
Approved By DWS	
PRINT NAME: DONALD W. STERNA, PE	DATE: 7/25/2017 LICENSE #: 19103



701 Xenia Avenue South, Suite 300
 Minneapolis, MN 55146
 Tel: (763)541-4800 • Fax: (763)541-1700
 wsbeng.com



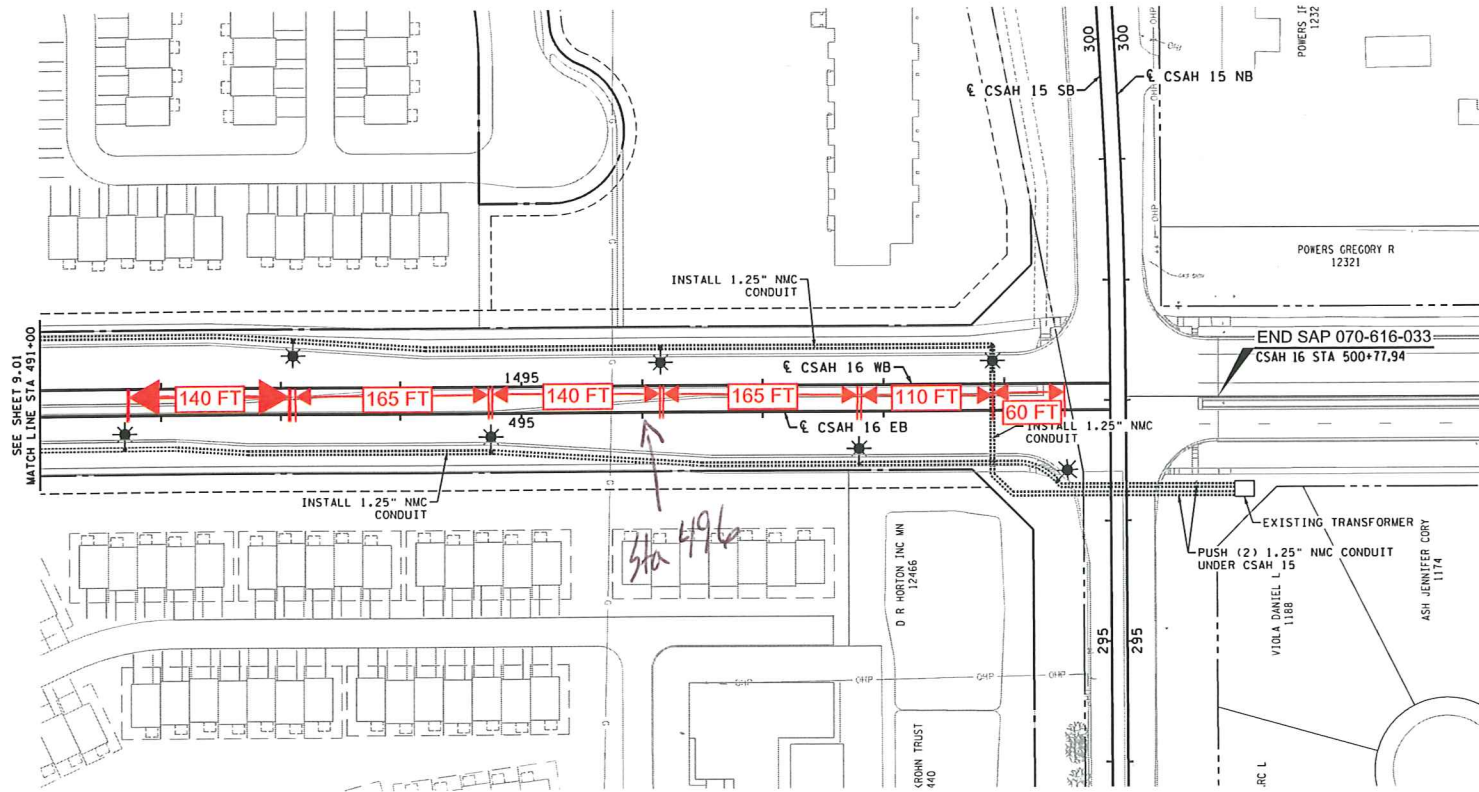
CSAH 16 and CSAH 15
 Improvements
 City of Shakopee, Minnesota

SCOTT COUNTY, MINNESOTA
 CSAH 16 - STA 479+00 TO STA 491+00
STREET LIGHTING CONDUIT PLAN
 SAP 070-616-033 (CSAH 16) / SAP 070-615-016 (CSAH 15)

SHEET
9.01
 OF THE
 ROADWAY
 PLAN

Proposed Design

CSAH 16 (17th Avenue)



LEGEND

- STREET LIGHT (INSTALLED BY OTHERS)
- 1.25" NMC CONDUIT FOR STREET LIGHTING CONTINUOUS INTERDUCT (FURNISHED BY SPUC)

- GENERAL NOTES:**
1. CONDUIT LOCATIONS MAY BE MODIFIED IN THE FIELD BY THE ENGINEER.
 2. CONDUIT WILL BE SUPPLIED BY SPUC AND INSTALLED BY CONTRACTOR.
 3. STREET LIGHT CONDUIT TO BE LOCATED TYPICALLY 2.5' BEHIND BACK-OF-CURB OR AS SHOWN ON THE PLANS BEHIND CURB AND 24" BELOW FINISHED GRADE.
 4. STREET LIGHTS TYPICALLY LOCATED 6' FROM FACE CURB, OR 2.5' FROM TRAIL OR WALK.

PLOTTED/REVISED: 7/25/2017

PATH & FILENAME: K:\01\650\CD\Plan\16\650_s102.dgn

NO.	DATE	BY	CHK	REVISIONS

Design By: DWS
 Print By: CWK
 Checked By: DMK
 Approved By: DWS

I HEREBY CERTIFY THAT THIS PLAN, SPECIFICATION, OR REPORT WAS PREPARED BY OR UNDER MY DIRECT SUPERVISION AND THAT I AM A DULY LICENSED PROFESSIONAL ENGINEER UNDER THE LAWS OF THE STATE OF MINNESOTA.

PRINT NAME: DONALD W. STERNA, PE

DATE: 7/25/2017 LICENSE #: 19103



701 Xenia Avenue South, Suite 300
 Minneapolis, MN 55146
 Tel: (763)541-4800 • Fax: (763)541-1700
 wsberg.com



CSAH 16 and CSAH 15
 Improvements
 City of Shakopee, Minnesota

SCOTT COUNTY, MINNESOTA
 CSAH 16 - STA 491+00 TO STA 500+00
STREET LIGHTING CONDUIT PLAN
 SAP 070-616-033 (CSAH 16) / SAP 070-615-016 (CSAH 15)

SHEET
9.02
 OF THE
 ROADWAY
 PLAN

RESOLUTION NO. 7856

**A Resolution Adopting a Revised Street Lighting
Policy for The City of Shakopee**

WHEREAS, the City Council desires to establish a written policy on street lighting for the City of Shakopee; and

WHEREAS, a Street Lighting Policy was adopted on June 2, 1998 by Resolution No. 4923; and revised on May 7, 2013 by Resolution No. 7301; and

WHEREAS, changes in lighting standards for poles and luminaires are desired for the Street Lighting Policy; and

WHEREAS, a Revised Street Lighting Policy has been prepared and was reviewed by the City Council at its April 4, 2017 Council meeting.

NOW, THEREFORE, BE IT RESOLVED BY THE CITY COUNCIL OF THE CITY OF SHAKOPEE, MINNESOTA:

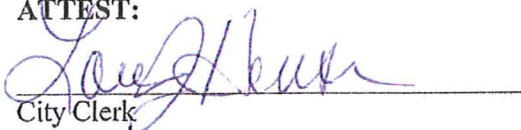
1. That the Revised Street Lighting Policy, a copy of which is attached hereto is hereby adopted.
2. This policy shall become effective upon adoption.

Adopted in regular session of the City Council of the City of Shakopee, Minnesota, held this 4th day of April, 2017.



Mayor of the City of Shakopee

ATTEST:


City Clerk

CITY OF SHAKOPEE STREET LIGHTING POLICY

I. OVERVIEW

The City intends that this street lighting policy promote the safe travel of City streets in a manner both fair and affordable to the City and its residents. Street lighting promotes pedestrian and traffic safety and to that extent the City shall approve street lighting where warranted by such concerns. Lighting requests shall come either by recommendation of the City Engineer or by property owners.

II. STREET LIGHTING STANDARDS

A. GENERAL STANDARDS

1. The developer shall pay the full capital costs of every lighting unit to be installed. This includes poles, luminaires, conduit, underground wiring, lighting controllers and all appurtenant work. The developer shall pay operation and maintenance for the lighting system as per City Ordinances and Shakopee Public Utilities Commission's Policy.

PLAN APPROVAL – All lighting plans are submitted to the City and Shakopee Public Utilities Commission for review with the approval of street lighting plans as determined by Shakopee Public Utilities Commission's Utility Manager and the City's City Engineer.

B. NEW SUBDIVISIONS

1. *Residential streets ((Average lot size of 2.5 acres or less)*

Lighting units shall be placed at intersections, with no more than 300 feet between lighting units where intersections are more than 450 feet apart, and at the ends of cul-de-sacs where the distance from the end of the cul-de-sac to the street intersection is greater than 250 feet. Developers shall also install lighting units to City Standards at the intersections of residential streets with collector streets.

The lighting unit standards shall be as per Shakopee Public Utilities Commission's recommendations and generally as follows:

Local Residential Streets: 24-foot direct embedded, dark bronze anodized tapered aluminum pole with an LED Coach Lantern luminaire mounting height of approximately 19.5 feet above finished grade. See LED Coach Lantern Lighting Unit Detail.

2. ***Residential Streets (Average lot size is greater than 2.5 acres)***

Lighting units shall be the same as for local residential streets where average lot size is 2.5 acres or less. Street lights shall be placed at intersections, with no more than 600 feet between lighting units where intersections are more than 900 feet apart, and at the ends of cul-de-sacs where the distance from end of cul-de-sac to the street intersection is greater than 500 feet. See LED Coach Lantern Lighting Unit Detail.

3. ***Arterial and Collector Streets in Residential Areas***

Lighting units shall be placed at intersections and spaced no more than 300 feet between lighting units where intersections are more than 450 feet apart, with lighting typically alternating from one side to the other depending on the width of the street.

The lighting unit standards shall be per Shakopee Public Utilities Commission's recommendations and generally as follows:

Arterial and Collector Streets (north of Shakopee Bypass): 40-foot wooden poles with an LED Rectilinear luminaire and a 6-foot arm having a luminaire mounting height of approximately 32 feet above finished grade.

Arterial and Collector Street (south of Shakopee Bypass): 34-foot direct embedded, dark bronze anodized tapered aluminum pole with an LED Rectilinear luminaire and a 6-foot arm having a luminaire mounting height of approximately 28 feet above finished grade. See LED Rectilinear Style Lighting Unit Detail.

4. ***Industrial Areas***

Lighting units shall be placed at intersections and spaced no more than 450 feet between lighting units where intersections are more than 675 feet apart.

Lighting units shall be the same as Collector Streets (south of Shakopee Bypass). See LED Rectilinear Style Lighting Unit Detail.

5. ***Commercial Areas***

Lighting units shall be placed at intersections and spaced no more than 300 feet between lighting units where intersections are more than 450 feet apart, with lighting units alternating from one side to the other depending on the width of the street.

Street lighting standards shall be the same as Collector Streets (south of Shakopee Bypass). See LED Rectilinear Style Lighting Unit Detail.

6. *Pedestrian Ways and Trails*

Walkway and trail lighting units, when approved by the City, shall be placed along pedestrian trails and walkways and at intersections with spacing to be determined on a design basis. Lighting unit orientation will be optimized to provide light primarily to the pedestrian way. The donation of power for these type of lighting units would be determined by SPUC on a case by case basis.

7. *Special Lighting Districts*

Special lighting districts can be established only when approved by the City Council and Utilities Commission (I.E. Downtown Central Business District).

C. EXISTING SUBDIVISIONS

Where traffic safety clearly warrants, a lighting unit may be placed upon the recommendation of the City Engineer's office. The basis of such warrants shall be a minimum average daily traffic of 2000 vehicles or a layout such that, in the City Engineer's estimation, significant improvement in safety might be obtained by the placement of a lighting unit. Since the benefit of such installations extends to the City as a whole, these will be done at City expense.

When property owners request additional lighting for the neighborhoods, they must do so by petition – signed by 60% of the property owners affected by the proposed light. The affected area shall be 150 linear feet on either side of the proposed light, on both sides of the street. The placement of the proposed lighting unit shall be specified in the petition. Petitioners shall approach the City, prior to circulating their petition, to obtain direction as to where street lights are warranted for their neighborhoods. Lighting unit shall be approved if they meet the criteria for street lighting standards.

If approved, each lighting unit shall be paid for by the affected residents. Payment shall be made prior to the installation of the lighting unit and shall include the cost of poles, fixtures, conduit, underground wiring and all appurtenant work. The method of payment shall be as directed by the City Finance Department. The City shall assume operation and maintenance costs for a light from the time it is energized by the utility and as per City/Shakopee Public Utilities Commission agreements by separate resolutions.

In existing developments, new lighting units shall match in style and wattage those already in place. If no lighting units are currently in place, then an LED Rectilinear lighting unit or an LED Coach Lantern lighting unit shall be the standard.

D. COUNTY HIGHWAYS

1. Lighting units shall be placed in intersections when the street light warrants, as established by Scott County Highway Department have been met. If warrants are met, per County policy, the County pays for the installation of the lighting unit with the cost of maintenance and operation to be provided as agreed upon in separate resolutions by the City and Shakopee Public Utilities Commission.
2. Lighting units at intersections of City streets to County roads may be installed by the City, if traffic and pedestrian safety clearly warrants a lighting unit in the estimation of the Public Works Director and as approved by City Council. The basis of such warrants shall be a minimum average daily traffic volume through the intersection of 2,500 vehicles per day or 250 vehicles per non-daylight hour which is defined 6:00 P.M. to 6:00 A.M. or if there have been three accidents per year that have occurred during conditions other than daylight or a layout such that in the Public Works Director's estimation significant improvement in safety might be obtained by the placement of a lighting unit and if the County road speed limit is posted at 40 m.p.h. or more.
3. Lighting units at intersections may be approved by City Council if warrants are not met, per Scott County and the City Engineer, if property owners petition the City and pay for the initial cost.
4. Installation of lighting units along a County road between intersections for traffic and pedestrian safety will be reviewed on a case by case basis by City Council.

III. FUNDING OF COSTS

A. INITIAL INSTALLATION OF LIGHTING

1. New Subdivisions

Residential, commercial and industrial developers will pay for the street lighting system and enter into an agreement with Shakopee Public Utilities Commission.

2. Existing Subdivisions

New lighting units would be paid for by benefitting properties through upfront payments to the City. The City will reimburse Shakopee Public Utilities Commission for installation of lighting units.

3. Collector Streets

All lighting units in developing areas will be paid by the benefitting properties except the City will pay the additional costs, if any, from the required street lighting system for the development.

4. County Roads

New lighting units not meeting County warrants, but meeting City warrants, and if approved by City Council, would be considered a benefit to the Community as a whole and paid by the City from the Capital Improvement Fund or other funds as designated by City Council.

B. REPLACEMENT OF FIXTURES

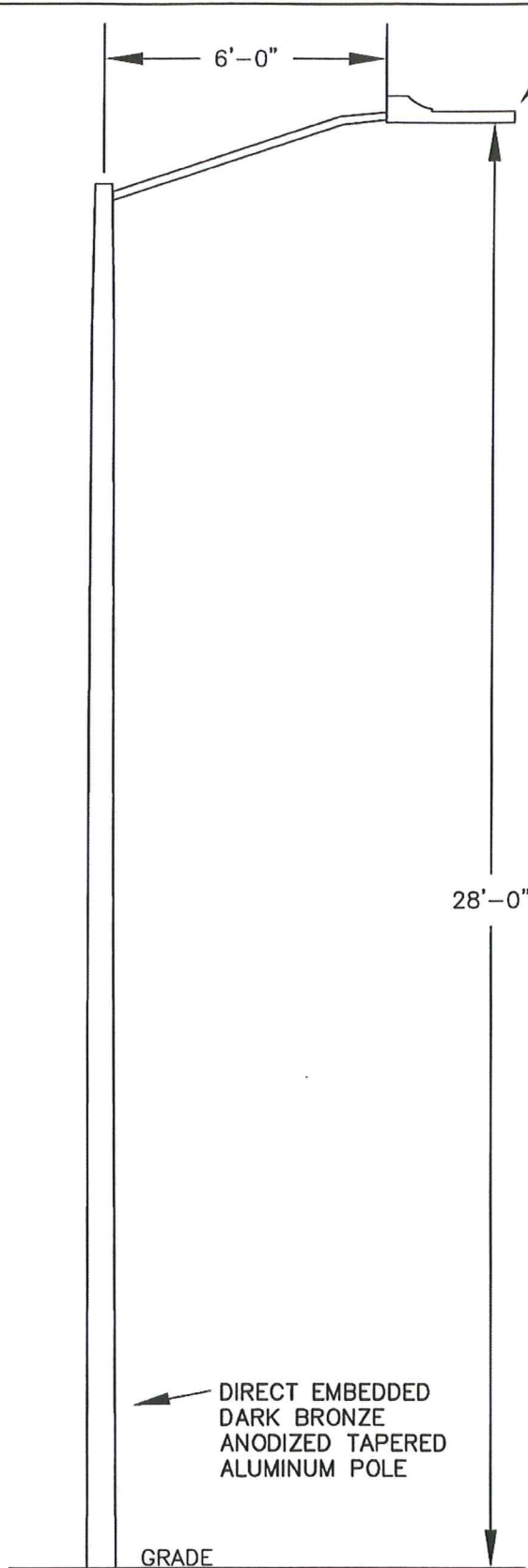
1. The replacement of luminaires is a maintenance cost to the City.

C. OPERATING COSTS

1. The cost of power for street lighting is provided by Shakopee Public Utilities Commission, as part of contributions from Shakopee Public Utilities Commission to the City, as agreed upon in separate resolutions.

D. MAINTENANCE COSTS

1. Shakopee Public Utilities Commission donates the cost of routine maintenance services for street lighting as provided by Shakopee Public Utilities Commission, as part of contributions from Shakopee Public Utilities Commission to the City as agreed upon in separate resolutions.



LED RECTILINEAR LUMINAIRE

- IES TYPE III DISTRIBUTION
- 4000 KELVIN CCT
- 1000 mA DRIVER NOMINAL MAXIMUM
- MAXIMUM OF 160 SYSTEM WATTS
- 95 LUMENS PER WATT MINIMUM
- 15000 LUMEN OUTPUT NOMINAL MINIMUM
- L70 GREATER THAN 100,000 HOURS AT 25° C
- 0V - 10V DIMMABLE DRIVER
- MULTI-VOLT OPERATION, 120 - 277V
- 10kV/10kA SURGE PROTECTION DEVICE
- 7-PIN NEMA PHOTOCONTROL RECEPTACLE
- TERMINAL BLOCK LOCATED INSIDE HOUSING
- CSA LISTED AND SUITABLE FOR OPERATION 30° C
- ALUMINUM HOUSING
- IP66
- SLIPFITTER WITH MINIMUM 3 STAINLESS SET SCREWS TO ACCOMMODATE 1.66" TO 2.375" O.D. HORIZONTAL POLE TENON
- 4-BOLT MOUNTING TO POLE TENON
- MEETS ANSI C136.31-2001 TABLE 2 ROADWAY LUMINAIRES VIBRATION SPECIFICATIONS FOR BRIDGE/OVERPASS (3G)
- DARK BRONZE IN COLOR
- TOOLLESS ENTRY
- LISTED ON DLC QUALIFIED PRODUCTS LIST
- APPROVED BY SPUC UTILITIES MANAGER AND CITY OF SHAKOPEE CITY ENGINEER

DIRECT EMBEDDED
DARK BRONZE
ANODIZED TAPERED
ALUMINUM POLE

GRADE



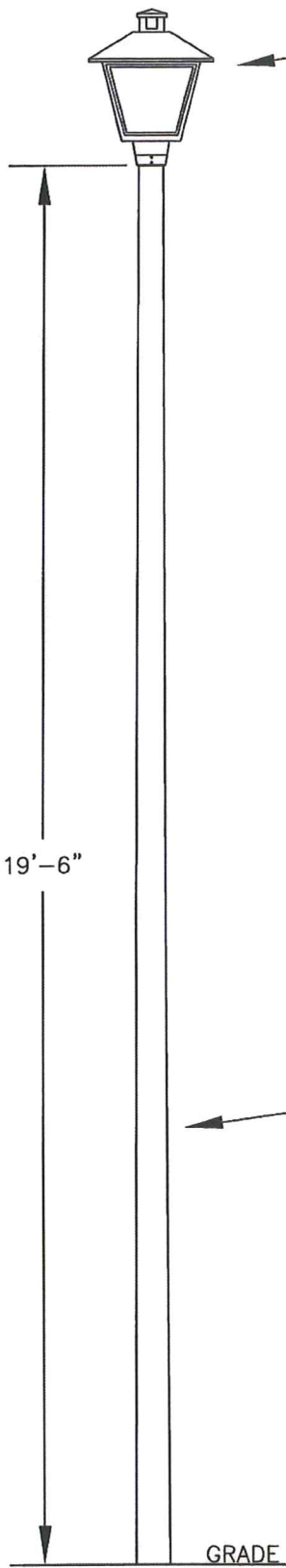
CITY OF
SHAKOPEE
ENGINEERING &
PUBLIC WORKS
DEPTS.

LED RECTILINEAR
LIGHTING UNIT

REVISED:
03-17

DETAIL NO:

APPROVED: CITY ENGINEER - APPROVED: UTILITIES MANAGER



LED COACH LANTERN LUMINAIRE

- IES TYPE III DISTRIBUTION – ACRYLIC OPTICS
- 4000 OR 3000 KELVIN CCT
- 1000 mA DRIVER NOMINAL MAXIMUM
- MAXIMUM OF 72 SYSTEM WATTS
- 82 LUMENS PER WATT MINIMUM
- 5500 LUMEN OUTPUT NOMINAL MINIMUM
- L70 GREATER THAN 100,000 HOURS AT 25° C
- 0V – 10V DIMMABLE DRIVER
- MULTI-VOLT OPERATION, 120 – 277V
- 10kV/5kA SURGE PROTECTION DEVICE
- 7-PIN NEMA PHOTOCONTROL RECEPTACLE
- CSA LISTED AND SUITABLE FOR OPERATION 30° C AMBIENT
- ALUMINUM HOUSING
- SLIPFITTER WITH MINIMUM 3 STAINLESS SET SCREWS TO ACCOMMODATE 2-3/8" O.D. POLE TENON
- DARK BRONZE IN COLOR
- TOOLLESS ENTRY
- APPROVED BY SPUC UTILITIES MANAGER AND CITY OF SHAKOPEE CITY ENGINEER

DIRECT EMBEDDED DARK BRONZE ANODIZED TAPERED ALUMINUM POLE

GRADE



CITY OF SHAKOPEE
ENGINEERING &
PUBLIC WORKS
DEPTS.

LED COACH LANTERN LIGHTING UNIT

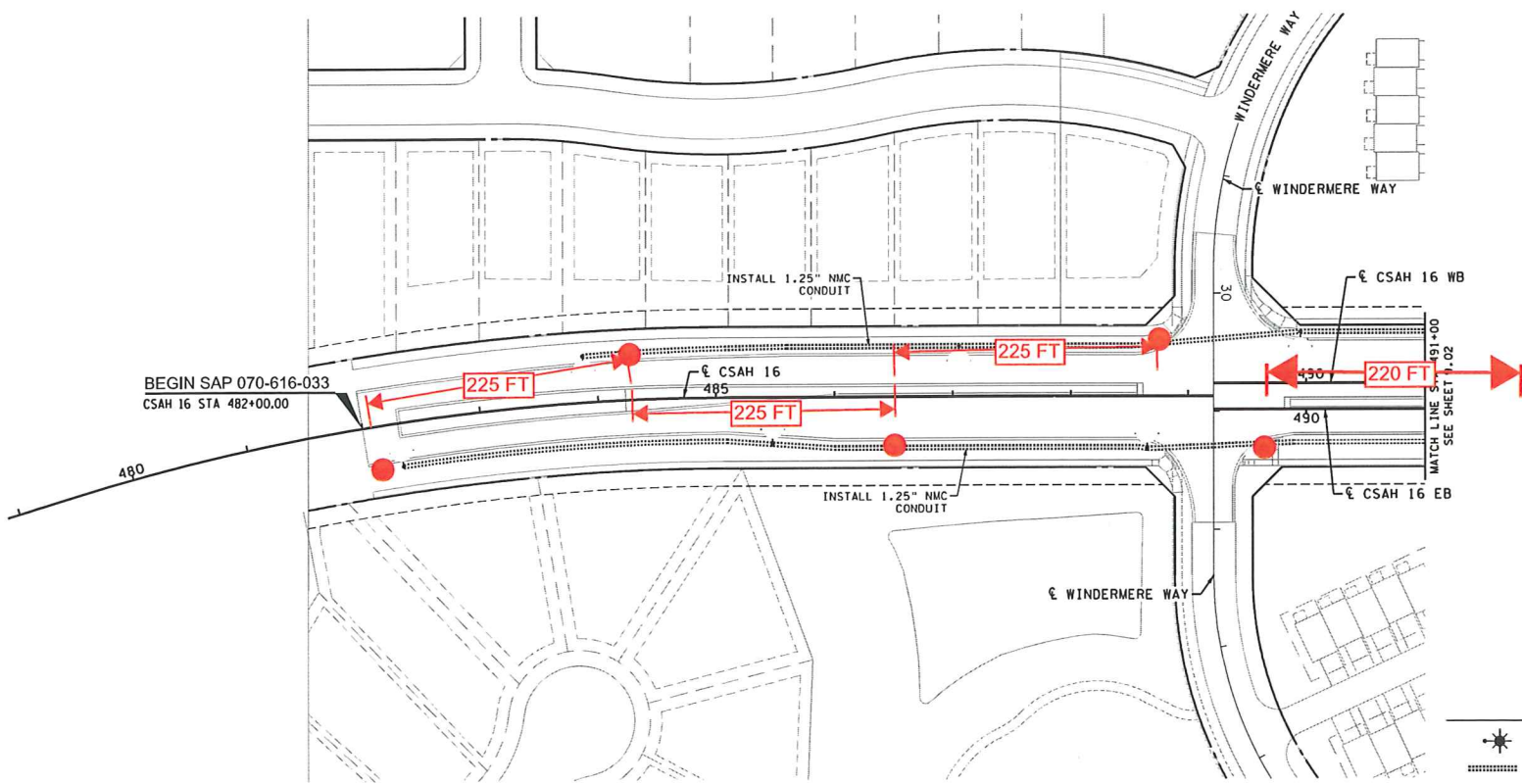
REVISED:
03-17

DETAIL NO:

APPROVED: CITY ENGINEER – APPROVED: UTILITIES MANAGER

Alternate Spacing

CSAH 16 (17th Avenue)



LEGEND

- STREET LIGHT (INSTALLED BY OTHERS)
- 1.25" NMC CONDUIT FOR STREET LIGHTING CONTINUOUS INTERDUCT (FURNISHED BY SPUC)

GENERAL NOTES:

1. CONDUIT LOCATIONS MAY BE MODIFIED IN THE FIELD BY THE ENGINEER.
2. CONDUIT WILL BE SUPPLIED BY SPUC AND INSTALLED BY CONTRACTOR.
3. STREET LIGHT CONDUIT TO BE LOCATED TYPICALLY 2.5' BEHIND BACK-OF-CURB OR AS SHOWN ON THE PLANS BEHIND CURB AND 24" BELOW FINISHED GRADE.
4. STREET LIGHTS TYPICALLY LOCATED 6' FROM FACE CURB, OR 2.5' FROM TRAIL OR WALK.

PLOTTED/REVISED: 7/25/2017

PATH & FILENAME: K:\01\1650\CSAH16\17th\1650_1701.dgn

NO.	DATE	BY	CHK	REVISIONS

Design By DWS	<small>I HEREBY CERTIFY THAT THIS PLAN, SPECIFICATION, OR REPORT WAS PREPARED BY OR UNDER MY DIRECT SUPERVISION AND THAT I AM A DULY LICENSED PROFESSIONAL ENGINEER UNDER THE LAWS OF THE STATE OF MINNESOTA.</small> PRINT NAME: DONALD W. STERNA, PE
Plan By CWX	
Checked By DMK	
Approved By DWS	
DATE: 7/25/2017 LICENSE # 19103	



701 Xenia Avenue South, Suite 300
 Minneapolis, MN 55116
 Tel: (763)541-4800 • Fax: (763)541-1700
 wsberg.com



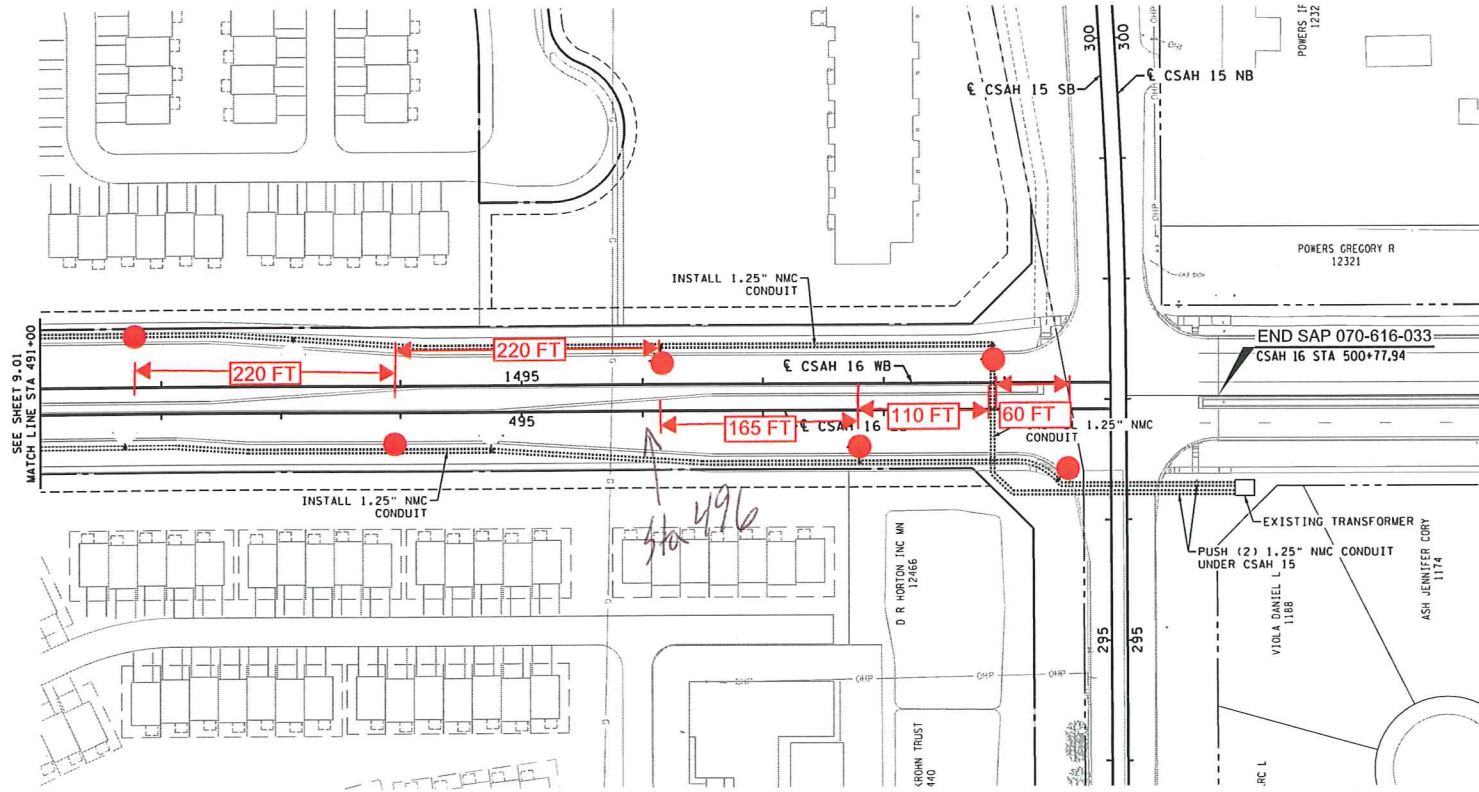
CSAH 16 and CSAH 15
 Improvements
 City of Shakopee, Minnesota

SCOTT COUNTY, MINNESOTA
 CSAH 16 - STA 479+00 TO STA 491+00
STREET LIGHTING CONDUIT PLAN
 SAP 070-616-033 (CSAH 16) / SAP 070-615-016 (CSAH 15)

SHEET
9.01
 OF THE
 ROADWAY
 PLAN

Alternate spacing

CSAH 16 (17th Avenue)



- LEGEND**
- STREET LIGHT (INSTALLED BY OTHERS)
 - 1.25" NMC CONDUIT FOR STREET LIGHTING CONTINUOUS INTERDUCT (FURNISHED BY SPUC)

- GENERAL NOTES:**
1. CONDUIT LOCATIONS MAY BE MODIFIED IN THE FIELD BY THE ENGINEER.
 2. CONDUIT WILL BE SUPPLIED BY SPUC AND INSTALLED BY CONTRACTOR.
 3. STREET LIGHT CONDUIT TO BE LOCATED TYPICALLY 2.5' BEHIND BACK-OF-CURB OR AS SHOWN ON THE PLANS BEHIND CURB AND 24" BELOW FINISHED GRADE.
 4. STREET LIGHTS TYPICALLY LOCATED 6' FROM FACE CURB, OR 2.5' FROM TRAIL OR WALK.

PLOTTED/REVISED: 7/25/2017

PATH & FILENAME: K:\01614580\CopPlan\01614580_102.dgn

NO.	DATE	BY	CHK	REVISIONS

Design By: **DWS**
 Plan By: **CKW**
 Checked By: **DMK**
 Approved By: **DWS**

I HEREBY CERTIFY THAT THIS PLAN, SPECIFICATION, OR REPORT WAS PREPARED BY OR UNDER MY DIRECT SUPERVISION AND THAT I AM A QUALIFIED PROFESSIONAL ENGINEER UNDER THE LAWS OF THE STATE OF MINNESOTA.

PRINT NAME: **DONALD W. STERNA, PE**

DATE: **7/25/2017** LICENSE #: **19103**



701 Xenia Avenue South, Suite 300
 Minneapolis, MN 55146
 Tel: (763)541-4800 • Fax: (763)541-1700
 wsbeng.com



CSAH 16 and CSAH 15
 Improvements
 City of Shakopee, Minnesota

SCOTT COUNTY, MINNESOTA
 CSAH 16 - STA 491+00 TO STA 500+00
STREET LIGHTING CONDUIT PLAN
 SAP 070-616-033 (CSAH 16) / SAP 070-615-016 (CSAH 15)

SHEET 9.02
 OF THE ROADWAY PLAN



11b

SHAKOPEE PUBLIC UTILITIES

"Lighting the Way – Yesterday, Today and Beyond"

July 24, 2017

TO: John Crooks, Utilities Manager *JAC*
FROM: Renee Schmid, Director of Finance and Administration *RS*
SUBJECT: Proposed 2018 Budget Planning Schedule

Attached is a proposed 2018 Budget Planning Schedule. The items highlighted in yellow indicate the dates that commission participation/action is required.

Overview of Key Dates for Commission

- 8/07/17 Request Commission direction on wage planning
- 10/02/17 Commission Decision on General Wage Range Increases
- 11/06/17 Commission Review of Draft CIP, Cash flow, and budget
- 11/20/17 Final Budget Approval by Commission
- 12/04/17 Commission adoption of various fee/rate resolutions as needed

Requested Action for 8/07/17 Commission Meeting

In prior years, the commission has designated a sub-committee to address wage planning. Staff is looking for direction on the approach the commission would like to take for 2018 wage planning.

SHAKOPEE PUBLIC UTILITIES
MEMORANDUM

11c

TO: John R. Crooks, Utilities Manager 

FROM: Lon R. Schemel, Water Superintendent 

SUBJECT: **WEBSITE UPDATE**

DATE: August 2, 2017

This update is for March 29, 2017 to August 1, 2017.

We now have enough data in Google Analytics to compare previous periods with previous years. These Google Analytics pages are compared to the previous year's period from March 29, 2016 to August 1, 2016.



SiteLock, the global leader in [website security](#), protects you from hackers, spam, viruses, and scams, [removes malware](#), and provides [PCI Compliance](#).

SiteLock has verified this website: 08/02/2017

spucweb.com



Company Name

Shakopee Public Utilities

Domain

spucweb.com

Verified spam-free

08/02/2017

Verified malware-free

08/02/2017

Got an online business? [Get protected by SiteLock.](#) >>>



FIND

Malware & Threats



FIX

Website Issues



PREVENT

Website Attacks



ACCELERATE

Performance



COMPLY

with PCI

Disclaimer: SiteLock provides independent network security and business verification services. We take great care to ensure that our certified information is current and accurate. All information provided is subject to change without notice. While SiteLock verifies a company's validity, it does not guarantee business performance.

© Copyright 2017 Data provided by [SiteLock](#)

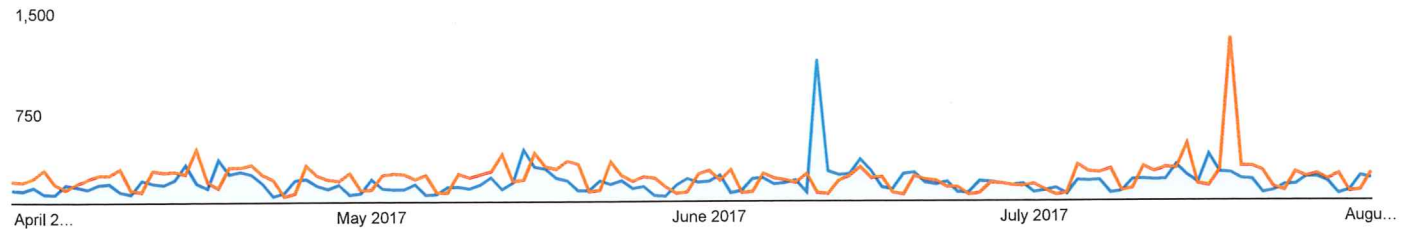
Audience Overview

All Users
+0.00% Sessions

Mar 29, 2017 - Aug 1, 2017
Compare to: Mar 29, 2016 - Aug 1, 2016

Overview

Mar 29, 2017 - Aug 1, 2017: Sessions
Mar 29, 2016 - Aug 1, 2016: Sessions



Sessions

-19.87%
18,133 vs 22,630



Users

-28.77%
10,969 vs 15,399



Pageviews

-14.57%
39,814 vs 46,606



Pages / Session

6.61%
2.20 vs 2.06



Avg. Session Duration

17.30%
00:02:17 vs 00:01:57



Bounce Rate

25.19%
29.88% vs 23.87%



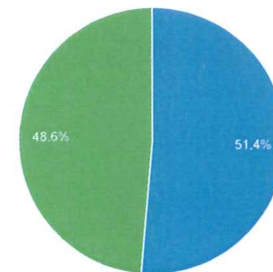
% New Sessions

-13.16%
51.42% vs 59.21%

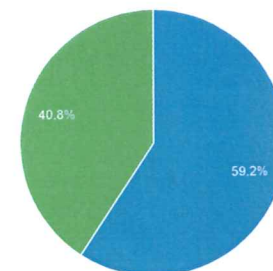


New Visitor Returning Visitor

Mar 29, 2017 - Aug 1, 2017



Mar 29, 2016 - Aug 1, 2016



Language	Sessions	% Sessions
1. en-us		
Mar 29, 2017 - Aug 1, 2017	17,943	98.95%
Mar 29, 2016 - Aug 1, 2016	22,158	97.91%
% Change	-19.02%	1.06%
2. en-gb		
Mar 29, 2017 - Aug 1, 2017	41	0.23%
Mar 29, 2016 - Aug 1, 2016	31	0.14%
% Change	32.26%	65.06%
3. es-419		
Mar 29, 2017 - Aug 1, 2017	26	0.14%
Mar 29, 2016 - Aug 1, 2016	13	0.06%
% Change	100.00%	149.60%
4. pt-br		
Mar 29, 2017 - Aug 1, 2017		

		15	0.08%
Mar 29, 2016 - Aug 1, 2016		20	0.09%
% Change		-25.00%	-6.40%
5. es-xl			
Mar 29, 2017 - Aug 1, 2017		13	0.07%
Mar 29, 2016 - Aug 1, 2016		15	0.07%
% Change		-13.33%	8.16%
6. (not set)			
Mar 29, 2017 - Aug 1, 2017		11	0.06%
Mar 29, 2016 - Aug 1, 2016		281	1.24%
% Change		-96.09%	-95.11%
7. zh-tw			
Mar 29, 2017 - Aug 1, 2017		10	0.06%
Mar 29, 2016 - Aug 1, 2016		2	0.01%
% Change		400.00%	524.00%
8. zh-cn			
Mar 29, 2017 - Aug 1, 2017		8	0.04%
Mar 29, 2016 - Aug 1, 2016		2	0.01%
% Change		300.00%	399.20%
9. vi			
Mar 29, 2017 - Aug 1, 2017		7	0.04%
Mar 29, 2016 - Aug 1, 2016		0	0.00%
% Change		100.00%	100.00%
10. c			
Mar 29, 2017 - Aug 1, 2017		6	0.03%
Mar 29, 2016 - Aug 1, 2016		3	0.01%
% Change		100.00%	149.60%

Users Flow

Mar 29, 2017 - Aug 1, 2017
Compare to: Mar 29, 2016 - Aug 1, 2016

All Users
+0.00% Sessions

Country

United States
18K ▼19%

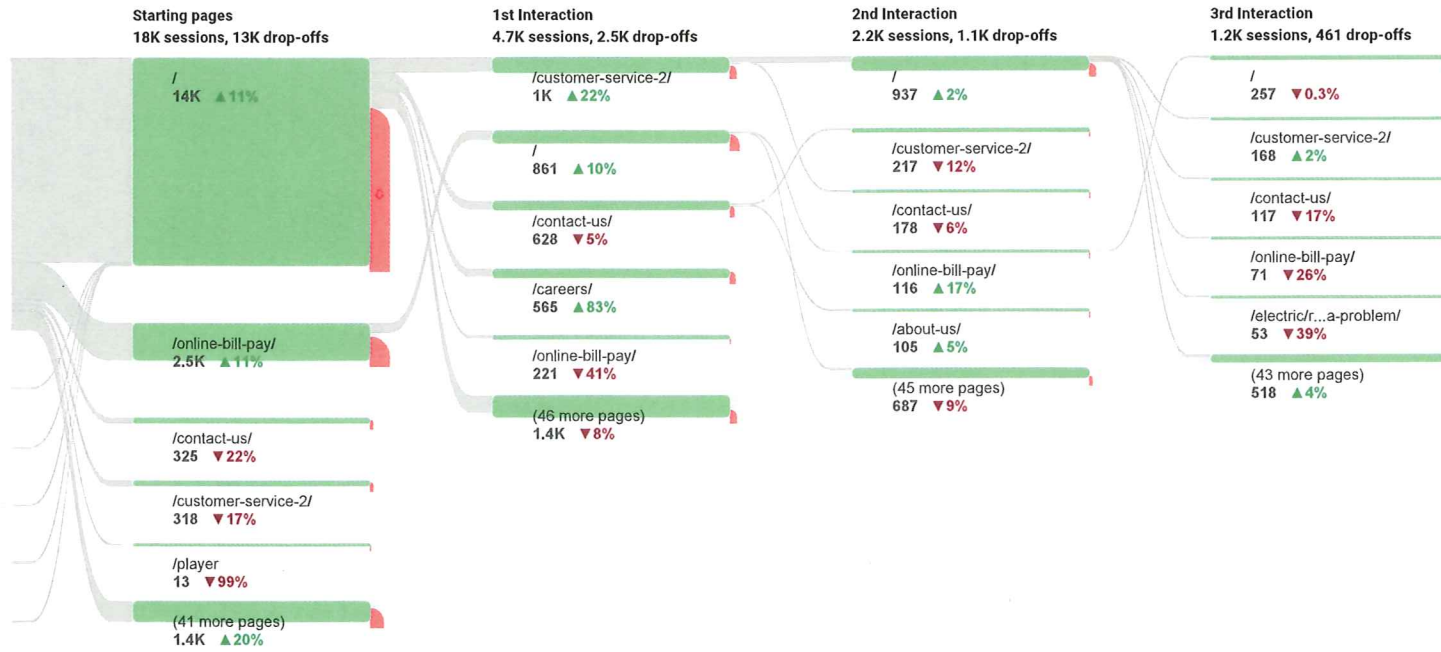
India
58 ▼15%

(not set)
56 ▲300%

Canada
19 ▼51%

United Kingdom
8 ▼96%

...
124 ▼27%



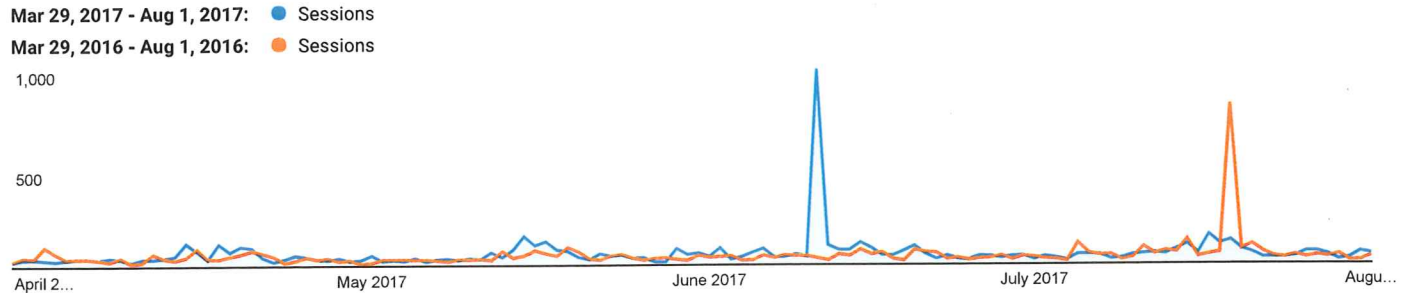
Devices

All Users
+12.73% Sessions

Mar 29, 2017 - Aug 1, 2017
Compare to: Mar 29, 2016 - Aug 1, 2016

Explorer

Summary



Mobile Device Info	Acquisition			Behavior			Conversions eCommerce		
	Sessions	% New Sessions	New Users	Bounce Rate	Pages / Session	Avg. Session Duration	Transactions	Revenue	Ecommerce Conversion Rate
	17.13% ▲ 7,309 vs 6,240	7.61% ▼ 51.70% vs 55.96%	8.22% ▲ 3,779 vs 3,492	2.51% ▼ 32.25% vs 31.46%	1.39% ▼ 2.66 vs 2.70	12.62% ▲ 00:02:30 vs 00:02:13	0.00% 0 vs 0	\$0.00 vs \$0.00	0.00% 0.00% vs 0.00%
1. Apple iPhone									
Mar 29, 2017 - Aug 1, 2017	3,213 (43.96%)	53.84%	1,730 (45.78%)	30.72%	2.65	00:02:28	0 (0.00%)	\$0.00 (0.00%)	0.00%
Mar 29, 2016 - Aug 1, 2016	2,527 (40.50%)	58.57%	1,480 (42.38%)	32.33%	2.77	00:02:09	0 (0.00%)	\$0.00 (0.00%)	0.00%
% Change	27.15%	-8.07%	16.89%	-4.99%	-4.40%	14.90%	0.00%	0.00%	0.00%
2. Apple iPad									
Mar 29, 2017 - Aug 1, 2017	756 (10.34%)	44.58%	337 (8.92%)	35.85%	1.67	00:01:54	0 (0.00%)	\$0.00 (0.00%)	0.00%
Mar 29, 2016 - Aug 1, 2016	725 (11.62%)	52.97%	384 (11.00%)	34.07%	1.79	00:01:59	0 (0.00%)	\$0.00 (0.00%)	0.00%
% Change	4.28%	-15.84%	-12.24%	5.22%	-6.90%	-4.01%	0.00%	0.00%	0.00%
3. Samsung SM-G930V Galaxy S7									
Mar 29, 2017 - Aug 1, 2017	204 (2.79%)	51.96%	106 (2.80%)	35.29%	2.85	00:02:48	0 (0.00%)	\$0.00 (0.00%)	0.00%
Mar 29, 2016 - Aug 1, 2016	42 (0.67%)	66.67%	28 (0.80%)	28.57%	3.24	00:03:17	0 (0.00%)	\$0.00 (0.00%)	0.00%
% Change	385.71%	-22.06%	278.57%	23.53%	-12.05%	-14.69%	0.00%	0.00%	0.00%
4. (not set)									
Mar 29, 2017 - Aug 1, 2017	141 (1.93%)	53.90%	76 (2.01%)	26.95%	3.01	00:03:12	0 (0.00%)	\$0.00 (0.00%)	0.00%
Mar 29, 2016 - Aug 1, 2016	248 (3.97%)	56.85%	141 (4.04%)	18.95%	1.87	00:01:29	0 (0.00%)	\$0.00 (0.00%)	0.00%
% Change	-43.15%	-5.20%	-46.10%	42.21%	61.07%	116.45%	0.00%	0.00%	0.00%
5. Samsung SM-G930T Galaxy S7									
Mar 29, 2017 - Aug 1, 2017	131 (1.79%)	45.80%	60 (1.59%)	22.14%	3.16	00:01:41	0 (0.00%)	\$0.00 (0.00%)	0.00%
Mar 29, 2016 - Aug 1, 2016	42 (0.67%)	64.29%	27 (0.77%)	21.43%	3.55	00:02:06	0 (0.00%)	\$0.00 (0.00%)	0.00%

% Change	211.90%	-28.75%	122.22%	3.31%	-10.92%	-19.40%	0.00%	0.00%	0.00%
6. Samsung SM-G930P Galaxy S7									
Mar 29, 2017 - Aug 1, 2017	94 (1.29%)	48.94%	46 (1.22%)	26.60%	3.46	00:02:39	0 (0.00%)	\$0.00 (0.00%)	0.00%
Mar 29, 2016 - Aug 1, 2016	22 (0.35%)	36.36%	8 (0.23%)	22.73%	3.77	00:03:27	0 (0.00%)	\$0.00 (0.00%)	0.00%
% Change	327.27%	34.57%	475.00%	17.02%	-8.36%	-23.20%	0.00%	0.00%	0.00%
7. Samsung SM-G920V Galaxy S6									
Mar 29, 2017 - Aug 1, 2017	92 (1.26%)	53.26%	49 (1.30%)	33.70%	3.10	00:02:21	0 (0.00%)	\$0.00 (0.00%)	0.00%
Mar 29, 2016 - Aug 1, 2016	112 (1.79%)	54.46%	61 (1.75%)	33.93%	3.38	00:01:55	0 (0.00%)	\$0.00 (0.00%)	0.00%
% Change	-17.86%	-2.21%	-19.67%	-0.69%	-8.21%	22.34%	0.00%	0.00%	0.00%
8. Samsung SM-G935T Galaxy S7 Edge									
Mar 29, 2017 - Aug 1, 2017	91 (1.25%)	47.25%	43 (1.14%)	34.07%	3.23	00:02:04	0 (0.00%)	\$0.00 (0.00%)	0.00%
Mar 29, 2016 - Aug 1, 2016	46 (0.74%)	54.35%	25 (0.72%)	30.43%	3.70	00:02:56	0 (0.00%)	\$0.00 (0.00%)	0.00%
% Change	97.83%	-13.05%	72.00%	11.93%	-12.58%	-29.36%	0.00%	0.00%	0.00%
9. Samsung SM-G920A Galaxy S6									
Mar 29, 2017 - Aug 1, 2017	90 (1.23%)	34.44%	31 (0.82%)	31.11%	2.29	00:01:36	0 (0.00%)	\$0.00 (0.00%)	0.00%
Mar 29, 2016 - Aug 1, 2016	57 (0.91%)	50.88%	29 (0.83%)	29.82%	3.51	00:03:28	0 (0.00%)	\$0.00 (0.00%)	0.00%
% Change	57.89%	-32.30%	6.90%	4.31%	-34.77%	-53.85%	0.00%	0.00%	0.00%
10. Samsung SM-G955U Galaxy S8+									
Mar 29, 2017 - Aug 1, 2017	81 (1.11%)	51.85%	42 (1.11%)	29.63%	3.44	00:02:15	0 (0.00%)	\$0.00 (0.00%)	0.00%
Mar 29, 2016 - Aug 1, 2016	0 (0.00%)	0.00%	0 (0.00%)	0.00%	0.00	00:00:00	0 (0.00%)	\$0.00 (0.00%)	0.00%
% Change	∞%	∞%	∞%	∞%	∞%	∞%	0.00%	0.00%	0.00%

Rows 1 - 10 of 487

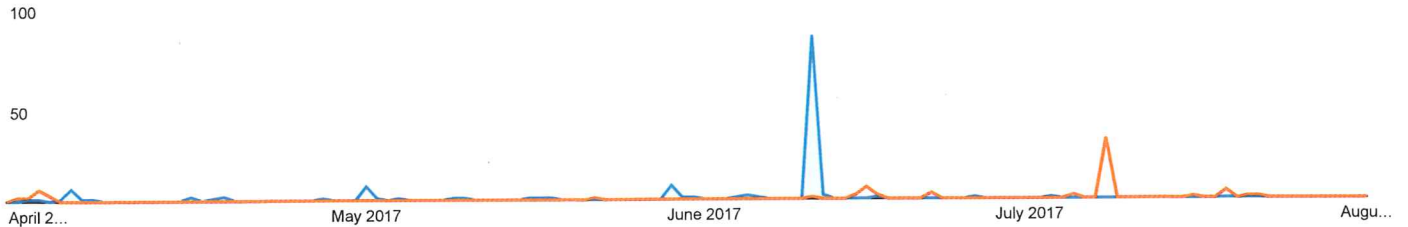
Network Referrals

Mar 29, 2017 - Aug 1, 2017
Compare to: Mar 29, 2016 - Aug 1, 2016

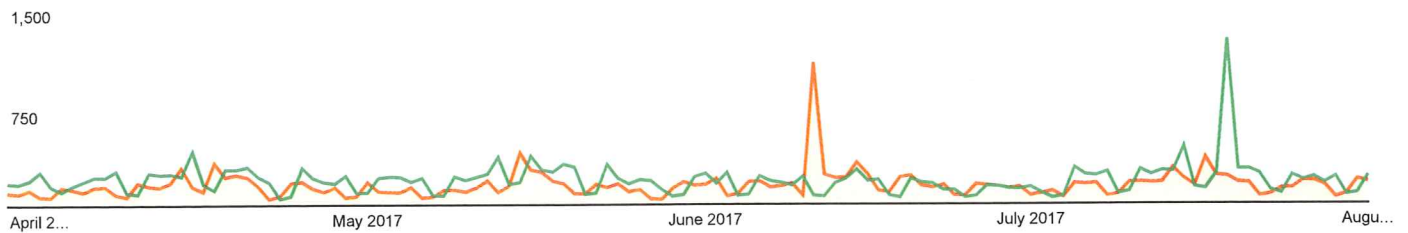
All Users
+0.00% Sessions

Social Referral

Mar 29, 2017 - Aug 1, 2017: Sessions via Social Referral
Mar 29, 2016 - Aug 1, 2016: Sessions via Social Referral



Mar 29, 2017 - Aug 1, 2017: All Sessions
Mar 29, 2016 - Aug 1, 2016: All Sessions



Social Network	Sessions	Pageviews	Avg. Session Duration	Pages / Session
1. Facebook				
Mar 29, 2017 - Aug 1, 2017	123 (94.62%)	179 (94.21%)	00:01:09	1.46
Mar 29, 2016 - Aug 1, 2016	37 (100.00%)	69 (100.00%)	00:00:46	1.86
% Change	232.43%	159.42%	48.98%	-21.96%
2. Twitter				
Mar 29, 2017 - Aug 1, 2017	5 (3.85%)	7 (3.68%)	00:00:06	1.40
Mar 29, 2016 - Aug 1, 2016	0 (0.00%)	0 (0.00%)	00:00:00	0.00
% Change	∞%	∞%	∞%	∞%
3. LinkedIn				
Mar 29, 2017 - Aug 1, 2017	2 (1.54%)	4 (2.11%)	00:00:22	2.00
Mar 29, 2016 - Aug 1, 2016	0 (0.00%)	0 (0.00%)	00:00:00	0.00
% Change	∞%	∞%	∞%	∞%

Social Users Flow

Mar 29, 2017 - Aug 1, 2017
Compare to: Mar 29, 2016 - Aug 1, 2016

All Users
+0.00% Sessions

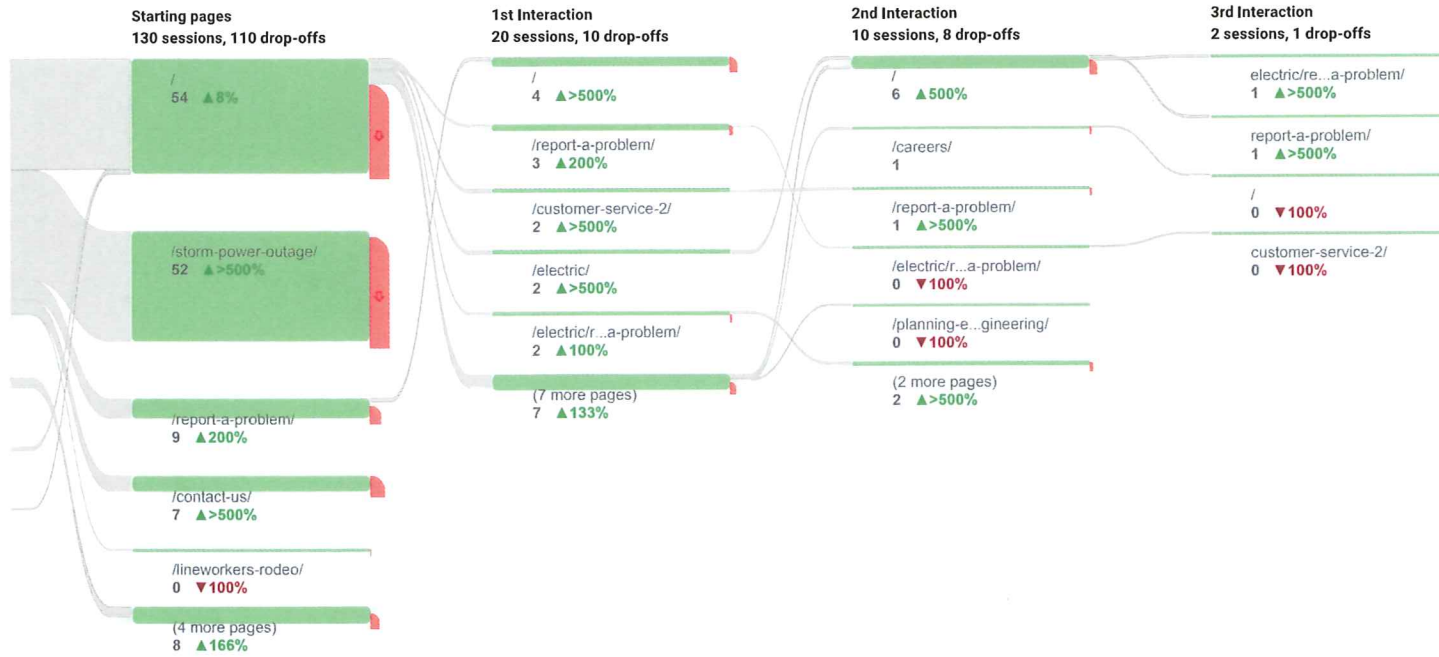
Social Network

Facebook
123 ▲232%

Twitter
5 ▲>500%

LinkedIn
2 ▲>500%

Blogger
0 ▼100%



		Video #	Title	Uploaded	Frame Size	Duration	Size	Plays		
<input type="checkbox"/>		10898199	7 17 2017	19 Jul 2017 SPUC	720x400	1h 9m 48s	993mb	2	embed	Manage
<input type="checkbox"/>		10584983	6 19 2017	20 Jun 2017 SPUC	720x406	29m 16s	881mb	3	embed	Manage
<input type="checkbox"/>		10425819	6 5 2017	06 Jun 2017 SPUC	720x406	46m 47s	859mb	4	embed	Manage
<input type="checkbox"/>		10205679	5 15 2017	16 May 2017 SPUC	720x406	34m 36s	850mb	5	embed	Manage
<input type="checkbox"/>		10087659	5 1 2017	04 May 2017 SPUC	720x406	1h 1m 26s	939mb	8	embed	Manage
<input type="checkbox"/>		9923375	4 17 2017	18 Apr 2017 SPUC	720x396	1h 20m 36s	973mb	2	embed	Manage
<input type="checkbox"/>		9795820	4 2 2017	06 Apr 2017 SPUC	720x400	1h 22m 51s	1016mb	6	embed	Manage
<input type="checkbox"/>		9632268	3 20 2017	21 Mar 2017 SPUC	720x406	1h 2m 38s	957mb	10	embed	Manage
<input type="checkbox"/>		9479672	3 6 2017	07 Mar 2017 SPUC	720x406	41m 44s	706mb	6	embed	Manage
<input type="checkbox"/>		9351773	2 21 2017	23 Feb 2017 SPUC	720x406	44m 25s	752mb	10	embed	Manage
<input type="checkbox"/>		9192557	2 6 2017	08 Feb 2017 SPUC	720x396	1h 23m 24s	948mb	8	embed	Manage
<input type="checkbox"/>		9032305	1 17 2017	18 Jan 2017 SPUC	720x406	16m 31s	501mb	5	embed	Manage
<input type="checkbox"/>		8935293	1 3 2017	04 Jan 2017 SPUC	720x396	31m 7s	937mb	5	embed	Manage
<input type="checkbox"/>		8854103	12 19 2016	20 Dec 2016 SPUC	720x396	57m 13s	948mb	0	embed	Manage
<input type="checkbox"/>		8764438	12 5 2016	06 Dec 2016 SPUC	720x396	36m 38s	840mb	5	embed	Manage
<input type="checkbox"/>		8673087	11 21 2016	22 Nov 2016 SPUC	720x396	42m 42s	973mb	4	embed	Manage
<input type="checkbox"/>		8588451	11 7 2016	09 Nov 2016 SPUC	720x396	1h 48m 38s	947mb	1	embed	Manage
<input type="checkbox"/>		8448257	10 17 2016	18 Oct 2016 SPUC	720x396	20m 59s	635mb	2	embed	Manage