

AGENDA
SHAKOPEE PUBLIC UTILITIES COMMISSION
REGULAR MEETING
January 8, 2024
at 5:00 PM

To watch this meeting live click or copy the link: <https://tinyurl.com/SPU-YouTube-Live>

1. **Call to Order** at 5:00pm in the SPU Service Center, 255 Sarazin Street
 - 1a) Roll Call

2. **Communications**
 - 2a) Interview Committee Participants (GD)

3. **Consent Agenda**
 - C=> 3a) Approval of December 4, 2023 Minutes (GD)
 - C=> 3b) Approval of January 8, 2024 Agenda (JK)
 - C=> 3c) January 8, 2024 Warrant List (KW)
 - C=> 3d) MMPA December 2023 Meeting Updates (GD)
 - C=> 3e) Monthly Water Dashboard for November 2023 (LS)
 - C=> 3f) Nitrate Results (LS)
 - C=> 3g) Res #2024-01 Resolution Approving Payment for the Pipe Oversizing Cost on the Water Main Project: Valley Crest (JA)
 - C=> 3h) Res #2024-02 Resolution Approving Payment for the Pipe Oversizing Cost on the Water Main Project: West End Lower Bluff Trunk Water Main Extension (JA)

*** Motion to approve the Consent Agenda

4. **Public Comment Period.** Please step up to the table and state your name and address for the record.

5. **Liaison Report** (JD)

6. **Reports: Water Items**
 - 6a) Water System Operations Report – Verbal (LS)

7. **Reports: Electric Items**
 - 7a) Electric System Operations Report – Verbal (BC)
 - 7b) Underground Electric Distribution System Policy (JA)
 - 7c) Res# 2024-04 Resolution Adjusting Fees Applied Under the Installation of Underground Electrical Distribution Systems Policy (JA)
 - *** Motion to approve the Res #2024-04 Resolution Adjusting Applied Under the Installation of Underground Electrical Distribution Systems Policy (JA)

8. **Reports: General**

8a) Marketing/Key Accounts Report – Verbal (SW)

8b) Res #2024-03 Resolution Approving a Water Main Construction Project, and Determining its Lateral Water Main Equivalent, Described as: West End Lower Bluff Trunk Water Main Extension

*** Motion to approve the Res #2024-03 Resolution Approving a Water Main Construction Project and Determining its Lateral Water Main Equivalent, Described as: West End Lower Bluff Trunk Water Main Extension

8c) Res #2024-05 Resolution Adopting Fees and Charges for 2024 (JA & LS)

*** Motion to approve the Res #2024-05 Resolution Adopting Fees & Charges for 2024

8d) General Manager Report – Verbal (GD)

8e) NES WTP Site Search Update 1) Shakopee Gravel/Hawkins potential site plans; 2) Appraisal for 3690 Eagle Creek Boulevard (JA) **

** A portion of this meeting may be closed under Minnesota Statutes, Section 13D.05, subdivision 3(c) to review confidential or protected nonpublic appraisal data and to develop or consider offers or counteroffers for the purchase of property at 1776 Mystic Lake Drive S and 3690 Eagle Creek Boulevard

9. **Items for Future Agendas**

10. **Tentative Dates for Upcoming Meetings**

- February 5, 2024
- March 4, 2024

11. **Adjournment**



PO Box 470 • 255 Sarazin Street
Shakopee, Minnesota 55379
Main 952.445-1988 • Fax 952.445-7767
www.shakopeeutilities.com

DATE: January 4, 2024
TO: Commissioners
FROM: Greg Drent, General Manager *GD*
Subject: Interview Committee Participants

I received an email from the City of Shakopee this week regarding SPU commissioners whose term is expiring. President Krieg and Vice President Letourneau's terms expire this year, and if they want to reapply to be on the commission, they can do so. The Vice President of SPU Commission and City Council member are typically on the interview committee. The interview committee makes a recommendation to the City Council for approval. Since both the President's and Vice President's terms are up this year, I think it is appropriate for the commission to decide who is on the interview committee.

Action: Discuss who will be on the interview committee for SPU commissioners

MINUTES OF THE
SHAKOPEE PUBLIC UTILITIES COMMISSION
December 4, 2023
Regular Meeting

1. Call to Order. President Krieg called the December 4, 2023 meeting of the Shakopee Public Utilities Commission to order at 5:00 P.M. President Krieg, Vice President Letourneau, Commissioner DuLaney, Commission Fox, and Commissioner Mocol were present.
2. Communication/Closed Session Summary. No communication was presented for discussion. Following the closed session from the last Commission meeting to evaluate the performance of the General Manager, President Krieg provided a summary of the conclusions of the Commission regarding the evaluation. He noted the leadership shown by Mr. Drent with the pending, large projects, as well as planning for the continuing growth of the City. He also discussed the salary adjustment for 2024, which is reflected in the budget materials.
3. Consent Agenda. The Commissioners requested that the following items be pulled from the consent agenda: items (3f), (3h), and (3i – 3p). Greg Drent, General Manager, requested a correction for item (3b) to change the date to December 4, 2023. Commissioner Mocol moved approval of the amended consent agenda, as follows:
 - (3a) Approval of November 6, 2023 Minutes;
 - (3b) December 4, 2023 Agenda;
 - (3c) December 4, 2023 Warrant List;
 - (3d) MMPA November 2023 Meeting Updates;
 - (3e) Monthly Water Dashboard for October 2023;
 - (3g) Res #2023-32 Resolution Regulating Wage Ranges; and
 - (3q) 2024 Final Budget.Commissioner Fox seconded the motion. Ayes, Krieg, Letourneau, DuLaney, Fox, and Mocol. Nays: None.

For item (3f), Commissioner Fox thanked Lisa Valiant for her years of service with SPU. He then moved for approval of (3f) Resolution of Appreciation for Lisa Valiant. Vice President Letourneau seconded the motion. Ayes, Krieg, Letourneau, DuLaney, Fox, and Mocol. Nays: None.

For item (3h), Commissioner DuLaney asked about the Shakopee Valley News as the official publication. Commissioner Mocol noted that the City also uses it. Commissioner DuLaney moved to approve (3h) Res #2023-34 Resolution Designating an Official Means of Publication. Commissioner Fox seconded the motion. Ayes, Krieg, Letourneau, DuLaney, Fox, and Mocol.

For item (3i), Commissioner Mocol moved approval of Res. #2023-35 Resolution Designating Official Depositories for the Shakopee Public Utilities Commission. Commissioner Fox seconded the motion. Ayes, Krieg, Letourneau, DuLaney, Fox, and Mocol. Nays: None.

For item (3j), President Krieg asked if water capacity charges would be reviewed after the 2024 study. Kelley Willemssen, Director of Finance and Administration, explained that the resolution contains an

increase of one percent based on the December 2020 report from Ehlers Public Finance Advisors, and that the rates will be reviewed once the new study is complete. President Krieg moved to approve (3j) Res #2023-36 Resolution Adjusting Fees Applied Under the Water Capacity Charge Policy. Vice President Letourneau seconded the motion. Ayes, Krieg, Letourneau, DuLaney, Fox, and Mocol. Nays: None.

For item (3k), President Krieg asked if trunk water charges will be included in the 2024 study. Joseph Adams, Director of Planning and Engineering, explained that the resolution contains an increase of 4.5 percent and that these charges will be reconsidered after the study is completed. He also noted a typo in the last recital on the first page of the resolution in that “requisite” should be replaced by “required.” Commissioner Mocol moved to approve (3k) Res #2023-37 Resolution Adjusting Fees Applied under the Trunk Water Charge Policy, as so revised. Commissioner Fox seconded the motion. Ayes, Krieg, Letourneau, DuLaney, Fox, and Mocol. Nays: None.

For item (3l), President Krieg asked about changes in water meter and installation fees from 2023 fees. Lon Schemel, Water Superintendent, explained that the changes related to increased costs of meters, equipment, and labor. Vice President Letourneau moved to approve (3l) Res# 2023-38 Resolution Establishing Water Meter and Installation Fees. Commissioner DuLaney seconded the motion. Ayes, Krieg, Letourneau, DuLaney, Fox, and Mocol. Nays: None.

For item (3m), President Krieg asked about the proposed changes in electric rates from 2023 rates. Ms. Willemssen explained that the 2024 proposed rates included a three percent increase in usage and phasing out the senior citizen rate, as recommended in the recent rate study. The Commission discussed removing Section V concerning Residential Service for Senior Citizens for clarity. Commissioner Mocol moved to approve (3m) Res #2023-39 Resolution Establishing Electric Rates for Customer Served by Shakopee Public Utilities. Vice President Letourneau seconded the motion. Ayes, Krieg, Letourneau, DuLaney, Fox, and Mocol. Nays: None.

For item (3n), President Krieg asked about proposed changes in water rates from 2023 rates. Ms. Willemssen explained the increase in service charges and the five percent increase in usage charges stemmed from the most recent rate study. These charges will be reviewed after the Ehlers study. Commissioner Fox moved to approve (3n) Res #2023-40 Resolution Establishing Water Rates in and for the City of Shakopee. Commissioner DuLaney seconded the motion. Ayes, Krieg, Letourneau, DuLaney, Fox, and Mocol. Nays: None.

For item (3o), the 2024 – 2028 Capital Improvement Plan (CIP), Mr. Adams explained the changes in his memo, including the removal of line 56 on page 5 in its entirety. Commissioner Mocol moved to accept (3o) 2024 – 2028 Final Capital Improvement Plan. Commissioner Fox seconded the motion. Ayes, Krieg, Letourneau, DuLaney, Fox, and Mocol. Nays: None

For item (3p), 2024 Capital Projects and Equipment, Mr. Adams explained that line 56 was removed from the Final Capital Improvement Plan, but by mistake was not removed from the Capital Projects and Equipment. He provided a revised document, which aligns with the CIP. Commissioner Mocol moved to approve the 2024 Capital Projects and Equipment as so corrected. Vice President Letourneau seconded the motion. Ayes, Krieg, Letourneau, DuLaney, Fox, and Mocol. Nays: None.

4. Public Comment Period. No public comments were offered.
5. Liaison Report. Commissioner DuLaney noted that he attended the Holiday Fest downtown and thanked SPU for participating. He also noted a resident's question as to decreased water pressure. Mr. Drent suggested having the resident call, email, or complete an online form.
6. Water Systems Operations Report. Mr. Schemel reported that crews have exercised all valves and winterized SPU buildings. He noted Facebook discussion about bagged hydrants and explained this process helped to protect hydrants from damage due to road salt. He also reported that construction for Pumphouse 23 has concluded for the year and is expected to resume in February of 2024.
7. Electric Systems Operations Report. Brad Carlson, Electric Superintendent, discussed construction projects, including joint trench work on 78 and Zumbro, Canterbury Park relocating existing primary, West End Lift Station transformer and cabling, a building fire at 101 Auto Salvage, and installing relay and access points for the Advanced Meter Infrastructure (AMI) project. Mr. Carlson reported three outages since the last Commission meeting: one due to Union Pacific Railroad, another the auto salvage, and the third was animal related.
8. Marketing/Key Accounts Report. Sharon Walsh, Director of Key Accounts/Marketing/Special Project, noted that an SPU Facebook post will explain the bagging of hydrants. She reported that for AMI, 34 electric meters have been installed; water meters will be installed at the same addresses in mid-December. Ms. Walsh noted coordination of meter data management with NISC, with billing hoped to start in December.
9. IT Risk Assessment Report. Phillip Dubbe, IT Director, presented the results of the FRSecure risk assessment. He noted that the last assessment was performed in 2017; he recommended an annual process. Mr. Dubbe explained that SPU has already been working on some of the items identified. Commissioner Mocol noted that if additional resources are needed, staff should make a request for the Commission to consider.
10. 2024 Commission Meeting and Workshop dates. Mr. Drent presented the proposed schedule for 2024 Commission meetings and workshop dates. Commissioner Fox moved to approve the 2024 Commission regular meeting schedule and workshop dates. Commissioner Mocol seconded the motion. Ayes, Krieg, Letourneau, DuLaney, Fox, and Mocol. Nays: None
11. General Manager Report. Mr. Drent presented updated design options for the Commission meeting room. He provided an update on current projects, including 2024 benefits, investments, updated RP3 submissions, and a new work order process in 2024.
12. Adjourn. Motion by Commissioner Fox, seconded by Commissioner Mocol, to adjourn. Ayes, Krieg, Letourneau, DuLaney, Fox, and Mocol. Nays: None

Greg Drent, Commission Secretary

AGENDA
SHAKOPEE PUBLIC UTILITIES COMMISSION
REGULAR MEETING
January 8, 2024
at 5:00 PM

To watch this meeting live click or copy the link: <https://tinyurl.com/SPU-YouTube-Live>

1. **Call to Order** at 5:00pm in the SPU Service Center, 255 Sarazin Street
 - 1a) Roll Call

2. **Communications**
 - 2a) Interview Committee Participants (GD)

3. **Consent Agenda**
 - C=> 3a) Approval of December 4, 2023 Minutes (GD)
 - C=> 3b) Approval of January 8, 2024 Agenda (JK)
 - C=> 3c) January 8, 2024 Warrant List (KW)
 - C=> 3d) MMPA December 2023 Meeting Updates (GD)
 - C=> 3e) Monthly Water Dashboard for November 2023 (LS)
 - C=> 3f) Nitrate Results (LS)
 - C=> 3g) Res #2024-01 Resolution Approving Payment for the Pipe Oversizing Cost on the Water Main Project: Valley Crest (JA)
 - C=> 3h) Res #2024-02 Resolution Approving Payment for the Pipe Oversizing Cost on the Water Main Project: West End Lower Bluff Trunk Water Main Extension (JA)

*** Motion to approve the Consent Agenda

4. **Public Comment Period.** Please step up to the table and state your name and address for the record.

5. **Liaison Report** (JD)

6. **Reports: Water Items**
 - 6a) Water System Operations Report – Verbal (LS)

7. **Reports: Electric Items**
 - 7a) Electric System Operations Report – Verbal (BC)

 - 7b) Underground Electric Distribution System Policy (JA)

 - 7c) Res# 2024-04 Resolution Adjusting Fees Applied Under the Installation of Underground Electrical Distribution Systems Policy (JA)
*** Motion to approve the Res #2024-04 Resolution Adjusting Applied Under the Installation of Underground Electrical Distribution Systems Policy (JA)

8. **Reports: General**

8a) Marketing/Key Accounts Report – Verbal (SW)

8b) Res #2024-03 Resolution Approving a Water Main Construction Project, and Determining its Lateral Water Main Equivalent, Described as: West End Lower Bluff Trunk Water Main Extension

*** Motion to approve the Res #2024-03 Resolution Approving a Water Main Construction Project and Determining its Lateral Water Main Equivalent, Described as: West End Lower Bluff Trunk Water Main Extension

8c) Res #2024-05 Resolution Adopting Fees and Charges for 2024 (JA & LS)

*** Motion to approve the Res #2024-05 Resolution Adopting Fees & Charges for 2024

8d) General Manager Report – Verbal (GD)

8e) NES WTP Site Search Update 1) Shakopee Gravel/Hawkins potential site plans; 2) Appraisal for 3690 Eagle Creek Boulevard (JA) **

** A portion of this meeting may be closed under Minnesota Statutes, Section 13D.05, subdivision 3(c) to review confidential or protected nonpublic appraisal data and to develop or consider offers or counteroffers for the purchase of property at 1776 Mystic Lake Drive S and 3690 Eagle Creek Boulevard

9. **Items for Future Agendas**

10. **Tentative Dates for Upcoming Meetings**

- February 5, 2024
- March 4, 2024

11. **Adjournment**

SHAKOPEE PUBLIC UTILITIES COMMISSION

WARRANT LISTING

January 8, 2024

By direction of the Shakopee Public Utilities Commission, the Secretary does hereby authorize the following warrants drawn upon the Treasury of Shakopee Public Utilities Commission:

WEEK OF 12/01/2023

CANTERBURY PARK CATERING & EVENTS	\$6,685.56	2023 SPU EMPLOYEE APPRECIATION
ARROW ACE HARDWARE	\$8.66	8 CABLE TIE
BARR ENGINEERING CO.	\$10,440.13	WO#2683 WATER TANK 9 ENG SERVICES
BEST BUY BUSINESS ADVANTAGE ACCOUNT	\$303.42	SAMSUNG 390C SERIES 27" LE
CRAIG BIBEAU	\$134.99	IRRIGATION CONTROLLERS REBATE
BORDER STATES ELECTRIC SUPPLY	\$150,115.96	DIEHL WATER METER 2"5" 17LL
JILL AND ERIC BRANWALL	\$50.00	ENERGY STAR CLOTHESWASHER REBATE
CINTAS CORP. #754	\$1,020.49	REPLENISH FIRST AID KITS BREAK ROOMS
CITY OF SHAKOPEE	\$335.00	ROW-017483-2023
CONCRETE CUTTING & CORING INC	\$925.85	FORESTRY HELMET SYSTEM
DESIGNING EARTH CONTRACTING	\$1,104.84	HYDRANT MTR#23930316 RETURN FINAL CALC
BRIAN DEVITT	\$500.00	ENERGY STAR COOLING/HEATING REBATE
FENUXLABS INC	\$3,795.40	GIS CONSULTING & SERVICES
FERGUSON US HOLDINGS, INC.	\$1,002.96	PRO READ TOUCH PAD
FIRST PRESBYTERIAN CHURCH	\$98.02	HYDRANT MTR #67492926 FINAL CALC REFUND
FRANZ REPROGRAPHICS, INC.	\$6,802.06	HEW PLOTTER PRINTER/INSTALL
GREYSTONE CONSTRUCTION CO	\$4,110.00	T&M REPAIR EXISTING SD DAMAGED BY BORING
INTERSTATE ALL BATTERY CTR	\$152.41	BATTERY WATER TRUCK #634
IRBY - STUART C IRBY CO	\$3,403.85	ELECTRIC LOGO PENTA BOLT
JT SERVICES	\$3,686.93	YELLOW & BLACK LETTERS
MANHEIM NORTHSTAR MN	\$71.71	HYDT MTR #67492923 RETURN REFUND
MIKE'S AUTO REPAIR INC	\$161.11	OIL CHANGE ELECT TRK#690
MINN VALLEY TESTING LABS INC	\$251.90	WATER TESTING COLIFORM
MMUA	\$1,425.00	2023 TREE TRIMMING WORKSHOP BRAINERD
TONY MYERS	\$186.34	REIMBURSE WELL CAP FOR MONITORING WELL
NAGEL COMPANIES LLC	\$4,160.00	WO#2815 BORING @ 12355 OLD BRICKYARD
NARDINI FIRE EQUIPMENT CO INC	\$600.18	INSPECTION NOVEC SYSTEM
GERRY NEVILLE	\$66.15	REIMBURSE 101 MILES
CINDY NICKOLAY	\$55.02	REIMBURSE 84 MILES
NORTHWEST ASPHALT	\$839.47	HYDT MTR #23933631 RET FINAL CALC REFUND
AARON PAULSON	\$500.00	ENERGY STAR COOLING/HEATING REBATE
PRECISION UTILITIES	\$10,155.00	REPAIRED BROKEN WATER LINE
RACHEL CONTRACTING, INC.	\$736.70	HYDT MTR #22061415 RET FINAL CALC REFUND
RESCO	\$56,415.12	TAP WIRE #4 180'REEL
RIES HEATING & A/C INC	\$110.00	ONSITE SVC CALL P.H.15 FRESH AIR DAMPER
ROERS COMPANIES	\$254.52	HYDT MTR #13213756 RET FINAL CALC REFUND
SUMMIT COMPANIES	\$2,503.15	EXTINGUISHER ANNUAL SERVICE
SWAN COMPANIES	\$1,131.96	HYDT MTR #462364 RET FINAL CALC REFUND
GREG TRIPLETT	\$131.00	REIMBURSE 200 MILES
USABUEBOOK	\$127.97	HACH ACCUVAC SNAPPER
SHARON WALSH	\$1,027.22	REIMB EXPENSES FROM APPA CONF NOV 2023
WESCO RECEIVABLES CORP.	\$5,238.75	CONNECTORS,FUSES,ELBOWS,FLOODLIGHT
MN CHILD SUPPORT	\$564.37	CHILD SUPPORT
CENTERPOINT ENERGY - ACH	\$785.38	GAS USAGE 10TH AVE 10/6-11/6 2023
FURTHER - ACH	\$426.81	DAYCARE FLEX CLAIM REIMB.
ZAYO GROUP, LLC	\$2,890.00	T1 LINE,SHAKO S SUB,PIKE LAKE NOV
PRINCIPAL LIFE INS. COMPANY	\$4,273.56	NOV. INVOICE AND CHARGE MONTH
MINNESOTA LIFE	\$1,247.03	NOV. PREMIUMS AND CHARGE MONTH
HEALTHPARTNERS	\$72,803.01	DEC. PREMIUMS, NOV. CHARGE MONTH
DELTA DENTAL PLAN OF MN	\$6,098.43	NOV. DENTAL PREMIUMS AND CHARGE MONTH
PAYROLL DIRECT DEPOSIT 12.01.23	\$127,950.53	
BENEFITS & TAXES FOR 12.01.23	\$119,488.57	

Total Week of 12/01/2023

\$617,352.49

WEEK OF 12/08/2023

CREDIT REFUNDS	\$6,717.54 CREDIT REFUNDS
AAR BUILDING SERVICE CO.	\$4,173.19 DECEMBER CLEANING SPU SERVICE
ABDO LLP	\$13,575.00 NOVEMBER FS ACCOUNTING SERVICES
ALTEC INDUSTRIES INC	\$2,645.47 STANLEY 84" POLE PRUNNER
AMARIL UNIFORM COMPANY	\$13.89 B.GUSTAFSON CLOTHING
APPLE FORD OF SHAKOPEE	\$78.40 WATER TRUCK#634 OIL CHANGE
B & B TRANSFORMER INC	\$10,672.50 BUSHINGS
BEST BUY BUSINESS ADVANTAGE ACCOUNT	\$303.42 2 SAMSUNG 390C SERIES MONITORS
MARY BONA	\$500.00 RESIDENTIAL SOLAR REBATE
BORDER STATES ELECTRIC SUPPLY	\$35,350.58 POLE MOUNT CONTROL
RAYMOND BRISTOL	\$500.00 RESIDENTIAL SOLAR REBATE
CORE & MAIN LP	\$33,000.00 METERS
DSI/LSI	\$445.11 DECEMBER GARBAGE SERVICE
E.H. RENNER & SONS INC	\$1,712.50 REPAIR IRRIGATION/TEST WELL WO2714
FERGUSON US HOLDINGS, INC.	\$89.77 COUPLINGS
FLYTE HCM LLC	\$10.00 COBRA PALTFORM USAGE
FRONTIER ENERGY, INC.	\$16,349.23 NOVEMBER 2023 P3 SUBSCRIPTION
GOPHER STATE ONE-CALL	\$588.60 NOVEMBER TICKETS
GRAINGER INC	\$42.20 HYBRID SEALANT(ELECT)
AYELE HABTEMICEAL	\$150.00 ENERGY STAR DISHWASHER REBATE
HAWKINS INC	\$310.00 CHLORINE CYLINDERS
DAVID HOFFMAN	\$200.00 ENERGY EFFICIENT COOLING/HEATING REBATE
HREXPERTISEBP LLC	\$306.25 AUG-NOV 2023 HR CONSULTING
INNOVATIVE OFFICE SOLUTIONS	\$1,060.19 2024 OFFICE CALENDARS
MONIQUE JENSEN	\$75.00 ENERGY STAR REFRIGERATOR REBATE
JOHNSON CONTROLS FIRE PROTECTION LP	\$878.49 REPAIR ON WET SPRINKLER SYSTEM WO2823
JT SERVICES	\$4,785.86 ADDL TAX DUE PERV PD INVOICES
DAVID KARJALAHTI	\$500.00 RESIDENTIAL SOLAR REBATE
KATAMA TECHNOLOGIES, INC.	\$375.00 WO#2472 AMI GENERAL CONSULTING
KENNEDY & GRAVEN, CHARTERED	\$1,344.00 WO#2634 WATER TRTMNT SITE ACQUISITION
MCGRANN SHEA CARNIVAL	\$19,202.50 GENERAL MUNICIPAL & REG MATTERS
MIKE'S AUTO REPAIR INC	\$272.10 OIL CHANGE ELECTRIC TRUCK #627
MILSOFT UTILITY SOLU, INC.	\$5,337.94 WINDMIL/LIGH TABLE SUPP 1/24-12/24
MINN VALLEY TESTING LABS INC	\$158.40 COLIFORM WATER TESTING
MMUA	\$676.00 NW LINEMAN COLLEGE
MN AWWA	\$300.00 DEVELOPMENT TRAINING J.H. & B.S.
MPOWER TECHNOLOGIES, INC.	\$700.00 WO#2472 AMI
MRA-THE MANAGEMENT ASSOCIATION	\$52.00 BACKGROUND CHECK K.K.
TONY MYERS	\$38.00 REIMBURSE FOR RENEWAL BACKFLOW LICENSE
NCPERS GROUP LIFE INS.	\$192.00 DECEMBER NCPERS LIFE INS PREMIUM
GERRY NEVILLE	\$77.94 REIMBURSE 119 MILES
CINDY NICKOLAY	\$184.46 REIMBURSE 87 MILES
OLDCASTLE INFRASTRUCTURE INC	\$8,463.43 CONCRETE UTILITY VAULT WO#2813
SANDY PATCHIN	\$350.00 ENERGY EFFICIENT COOLING/HEATING REBATE
PLUNKETT'S PEST CONT, INC.	\$153.97 GENERAL PET CONTROL P.H./WELL #4
PRIME SECURITY BANK	\$1,263.00 INTERIOR LIGHTING REBATE PROJ#1110
RESCO	\$70,962.85 45KV/150KVA 3H TRANSFORMERS
JUSTIN ROTERT	\$250.00 BOOTS REIMB 2023
LON SCHEMEL	\$90.00 LED LIGHTING REBATE
RICHARD SCHIBUR	\$350.00 ENERGY EFFICIENT COOLING/HEATING REBATE
SCHNEIDER ELECTRIC	\$3,296.00 INTERIOR LIGHTING REBATE
BRANDON SCHWARTZ	\$319.00 BOOT REIMB/BACKFLOW TESTING LICENSE
SCOTT COUNTY GOVT EAST	\$1,071.00 EXTERIOR LIGHTING REBATE PROJ#1211
SCOTT COUNTY LEC	\$9,180.00 INTERIOR LIGHTING REBATE PROJ#1233
SCOTT COUNTY TREASURER	\$2,100.00 NOVEMBER FIBER CHARGE
SHAKOPEE SCHOOLS	\$2,000.00 SOLAR REBATE (EAST MIDDLE SCHOOL)
SHAKOPEE SCHOOLS	\$2,000.00 SOLAR REBATE (SWEENEY)
SHORT ELLIOTT HENDRICKSON INC	\$7,414.63 WO#2634 WATER TRTMNT FEASIBILITY STUDY
STAR TRIBUNE	\$627.54 12/8/23 - 12/6/24 RENEWAL
SULLIVAN HAZELTINE ALLINSON LLC	\$3,251.50 CYXTERA TECHNOLOGIES CASE PROF SEVC'S
SUMMERGATE DEVELOPMENT	\$36,093.69 WO#2597 SUMMERLAND ND ADD WM PLAN REFUND
TOM KRAEMER, INC	\$399.54 WO#2472 TANK SITE STORAGE SERVICES
GREG TRIPLETT	\$72.70 REIMBURSE 111 MILES
TRUE NORTH CONTROLS	\$1,812.00 TROUBLE SHOOTING RADIO COMM ENG
JASON TURTLE	\$125.00 HVAC/MOTORS DRIVES REBATE
TWIN CITY GARAGE DOOR CO.	\$4,245.00 SPU SHOP GARAGE DOOR REPAIR
ULINE, INC.	\$181.64 TRASH LINERS(WATER)
USABLUEBOOK	\$28.19 HACH ACCUVAC(WATER)
VERIZON WIRELESS	\$4,720.90 NOVEMBER CELL PHONE BILL
WATER CONSERVATION SERVICE INC	\$362.75 LEAK LOCATE 11/6/23 2320 JENNIFER LN
WESCO RECEIVABLES CORP.	\$833.66 SLEEVE STRAP ADJUST
WSB & ASSOCIATES INC.	\$14,094.00 WO#2581 P.H.#23 OCT SERVICES
XCEL ENERGY	\$1,290.99 VALLEY PRK DR ELECT SVC 10.23-11.21
FURTHER - ACH	\$410.40 MEDICAL FLEX CLAIM REIMB.

Total Week of 12/08/2023**\$341,756.91**

WEEK OF 12/15/2023

AMERICAN ENGINEERING TESTING INC	\$15,025.00	WO#2783 SHKO WATER FILL STATION ENGINEER
NARIN ANDERSON	\$350.00	ENERGY STAR COOLING/HEATING REBATE
BOLTON & MENK INC.	\$3,717.00	WO#2568 W END LOWER BLUFF PROF SVCS
MITCHELL BOOGREN	\$50.00	WATER SENSE TOILET REBATE
BORDER STATES ELECTRIC SUPPLY	\$171,265.89	FORM 4S CL20
BRAINERD UTILITIES	\$3,913.28	TOTAL SERVICE COST WO#2695
ANTHONY BREZINA	\$38.00	BACKFLOW TESTER RENEWAL
BUDDERFLY INC.	\$339.00	INTERIOR LIGHT/REFRIG CONTROLS REBATE
CALDWELL TANK, INC.	\$7,100.00	PAYMENT #16
BRADLEY CARLSON	\$147.50	PER DIEM ST CLOUD CONF 12/5/12/7
CITY OF SHAKOPEE	\$848,561.14	WO#2568 W END LWR BLUFF/NOV FUEL BILL/ROW PERMIT
CITY OF SHAKOPEE	\$492,713.99	NOV SW \$383,871.43 & SD \$108,842.56
CITY OF SHAKOPEE	\$517,392.75	DEC 2023 PILOT TRANSFER FEE TRUE UP
CITY OF SHAKOPEE	\$1,080.04	DEC 2023 STORM DRAINAGE/SPU PROPERTIES
CORE & MAIN LP	\$9,562.24	METERS
CORVAL CONSTRUCTORS, INC.	\$2,453.46	REPAIR ON NEGATIVE PRESSURE SPU BLDG
CUSTOMER CONTACT SERVICES	\$431.26	AFTER HRS ANSWERING SVC 12/12/23-1/8/24
E.H. RENNER & SONS INC	\$52,361.00	WELL#21 CLEAN OUT YEAR 2023
KURT ERICSON	\$175.00	ENERGY STAR CLOTHES WASHER REBATE
JAMES FIEDLER	\$225.00	ENERGY STAR DISHWASHER REBATE
FRONTIER ENERGY, INC.	\$4,876.35	NOV C&I IMPLENTATION PROF SVCS
GRAINGER INC	\$194.87	PIPE THREAD(WATER)
BRAD GUSTAFSON	\$147.50	PER DIEM ST CLOUD CONFERENCE 12/5-12/7
DAVID HAGEN	\$300.00	PROFESSIONAL OPERATOR DEVELOPMENT MNAWWA
HAWKINS INC	\$9,109.96	CHEMICALS,CHLORINE,HYDROFLUOSILIC ACID
MATTHEW HEINZMANN	\$500.00	ENERGY STAR COOLING/HEATING REBATE
HENNEN'S AUTO SERVICE INC.	\$81.98	OIL CHANGE TRK 618
HIGH FIVE ERECTORS II, INC.	\$448.00	HOIST TRANSFORMER @ RELIAKOR 8600 HANSEN
HOTSY EQUIPMENT OF MINNESOTA	\$925.54	TRK & EQUIP WASH BULK
JIM HOWE	\$350.00	ENERGY STAR COOLING/HEATING REBATE
IDP DEAN LAKES B1, LLC	\$21,622.69	WO#2703 INLAND DEV PROJECT CLOSE REFUND
IRBY - STUART C IRBY CO	\$13,904.17	SOCKETS PREWIRED LEVER BYPASS
JT SERVICES	\$61,667.11	SATURATED WIPES
LARKSTUR ENGINEERING, INC	\$29.66	STRAIGHT THREAD ADAPTER (ELEC)
MINN VALLEY TESTING LABS INC	\$345.40	WATER TESTING NITRATES
MINNESOTA RURAL WATER ASSOCIATION	\$300.00	TRAINING 1/9-1/11 2024 TONY BREZINA
MN DEPT OF HEALTH	\$32.00	TONY BREZINA CLASS C WATER OPER EXAM
SAMUEL MOMAH	\$177.30	REIMBURSEMENT OF EE PORTION BENEFITS
NAPA AUTO PARTS	\$359.78	BATTERY FOR OLD TRK 616
GERRY NEVILLE	\$93.01	REIMBURSE 142 MILES
CINDY NICKOLAY	\$133.62	REIMBURSE 204 MILES
NISC	\$31,697.77	NOV PRINT SERVICES INVOICE
NORTHERN STATES POWER CO	\$2,886.68	NOVEMBER POWER BILL
TYLER O'BRIEN	\$397.50	PER DIEM ST CLOUD CONF 12/5-12/7
PITNEY BOWES GLOBAL FINANCIAL SERVIC	\$1,214.52	LEASE CONTRACT BILL PD 9/30/23-12/29/23
PRECISION UTILITIES	\$13,510.00	WORK FOR 706 HOLMES ST
QUALITY FORKLIFT SALES & SERVICE	\$113.43	TUBE KIT (E)
RESCO	\$34,696.53	4PT 15KV 200AMP W U STRAPS
CODY SCHUETT	\$147.50	PER DIEM ST CLOUD CONF 12/5-12/7
SCOTT COUNTY LEC	\$921.00	EXTERIOR LIGHTING REBATE PROJ#1423
STAPLES OIL COMPANY, INC.	\$213.99	DIESEL EXHAUST FLUID BULK
STINSON LLP	\$8,442.00	NOVEMBER LABOR MATTERS 3522418.0002
LISA SVIHEL	\$50.00	WATER SENSE TOILET REBATE
TOM KRAEMER, INC	\$721.78	WO#2472 AMI TANK SITE STORAGE CONTAINER
GREG TRIPLETT	\$91.04	REIMBURSE 139 MILES
UNITED SYSTEMS & SOFTWARE INC	\$6,039.88	ITRON ENCODER/MOUNTING KIT AMI
VERIZON WIRELESS	\$106.87	11/6-12/5 BILLING
JAMIE VON BANK	\$147.50	PER DIEM ST CLOUD CONF 12/5-12/7
WATER CONSERVATION SERVICE INC	\$360.79	LEAK LOCATE 11/20/23 @ 826 SPENCER
WESCO RECEIVABLES CORP.	\$4,253.96	COUPLING E-LOC 3IN
XCEL ENERGY	\$122.22	GAS USAGE AMBERGLEN 10/22-11/25 2023
YOURMEMBERSHIP.COM INC.	\$39.00	ENGINEERING JOB POSTING
DAVE ZAGER	\$500.00	ENERGY STAR COOLING/HEATING REBATE
MN CHILD SUPPORT PAYMENT CENTER	\$564.37	CHILD SUPPORT CASE: 001422536402
VERIZON	\$625.70	NOVEMBER TRUCK TRACKING
AMERICAN NATL BANK_MASTERCARD_ACH	\$9,122.43	NOVEMBER CC STATEMENT
CENTERPOINT ENERGY - ACH	\$2,073.72	GAS USAGE 10TH AVE 11/6-12/6 2023
FURTHER - ACH	\$1,153.81	FLEX DAYCARE CLAIM
MMPA C/O AVANT ENERGY	\$2,723,099.18	NOVEMBER POWER BILL
MN DEPT OF REVENUE ACH PAYMENTS	\$287,464.00	NOVEMBER SALES & USE TAX PAYABLE
PAYROLL DIRECT DEPOSIT 12.15.23	\$125,584.28	
BENEFITS & TAXES FOR 12.15.23	\$122,972.47	

Total Week of 12/15/2023

\$5,621,834.41

WEEK OF 12/22/2023

ARAMARK REFRESHMENT SERVICES INC	\$206.42	COFFEE 42CT CASE
B & L TRUCK REPAIR INC	\$20,756.85	DOT SERVICE 2.14.23 ELECTRIC
BORDER STATES ELECTRIC SUPPLY	\$553.33	6FT PLSTC TAPE
CDW GOVERNMENT LLC	\$4,777.20	TENABLE QUICK START ONBOARD
COMCAST CABLE COMM INC.	\$2.29	CABLE FOR BREAKROOM
BRIAN DEVITT	\$150.00	ENERGY STAR DISHWASHER REBATE
DITCHWITCH OF MINNESOTA	\$1,050.28	REPLACEMENT PARTS
DIVERSIFIED ADJUSTMENT SERVICES INC	\$514.73	NOVEMBER COLLECTION STMT
GREG DRENT	\$147.50	PER DIEM CONF ST CLOUD MN DEC 2023
GOPHER STATE ONE-CALL	\$1,048.95	AUG TICKETS -ORIG CHK 66503 LOST IN MAIL
GRAINGER INC	\$25.36	STORAGE TOTE(W)
HENRICKSEN PSG	\$2,918.64	WO#2725 STAGE 3 LEG RECTANGLE C FT
MATTHEW HULLANDER	\$75.00	ENERGY STAR REFRIGERATOR REBATE
INNOVATIVE OFFICE SOLUTIONS	\$282.50	OFFICE SUPPLIES
JOHNSON CONTROLS FIRE PROTECTION LP	\$1,200.80	SERVICE CALL REPAIR WO#2823
JT SERVICES	\$37,795.79	LED COLLECTOR ST LIGHT
DAVID KELLOGG	\$500.00	ENERGY STAR COOLING/HEATING REBATE
KRB DEVELOPMENT VIII LLC	\$14,064.22	WO#2476 WHISPERING WATER WM PLAN REV
SON LAM	\$350.00	ENERGY STAR COOLING/HEATING REBATE
PAT LINDER	\$150.00	ENERGY STAR DISHWASHER REBATE
MASTEC NETWORK, LLC	\$506.68	REFUND DUE WO#2770 AT&T NEW SVC PROJ CLO
MINN DEPT OF COMMERCE	\$11,062.04	3RD QTR FISCAL YR 2024 INDIRECT ASSESME
MINN VALLEY TESTING LABS INC	\$376.50	WATER TESTING NITRATES+NITRATES
SHELIA MITCHELL	\$75.00	ENERGY STAR REFRIGERATOR REBATE
MRA-THE MANAGEMENT ASSOCIATION	\$1,225.00	ANNUAL MEMBERSHIP 1/1/24-12/31/24
NAPA AUTO PARTS	\$28.70	DIATOMACEOUS EARTH OIL ABS
GERRY NEVILLE	\$388.86	REIMBURSE 212 MILES
CINDY NICKOLAY	\$104.80	REIMBURSE 160 MILES
WILLIAM J PICKA	\$50.00	ENERGY STAR WATER SENSE TOILET REBATE
RESCO	\$1,800.29	WIRE TIE #4
RICE LAKE CONSTRUCTION GROUP	\$504,717.90	WO2581 P.H. #23 PYMT NO. 1
SCOTT COUNTY TREASURER	\$2,100.00	DECEMBER FIBER CHG
SHAKOPEE AREA CATHOLIC SCHOOLS	\$9,704.00	REBATE HVAC/MOTORS_DRIVES
JON SINNEN	\$430.00	ENERGY STAR CLOTHES WASHER REBATE
STATE OF MINNESOTA-MNIT SERVICES	\$734.01	NOVEMBER WAN CHARGES
TESCO - THE EASTERN SPECIALITY COMPANY	\$250.00	QTRY ADAPTIV SERVICES 1/1/24-3/31/24
TRENCHERS PLUS INC	\$47,787.07	WO#2830 TORO DINGO/BUCKET
GREG TRIPLETT	\$122.48	REIMBURSE 187 MILES
TWIN CITY GARAGE DOOR CO.	\$684.00	SERVICE CALL REPAIR SHOP GARAGE DOOR
UPS STORE # 4009	\$14.82	SHIPPING FOR WARRANTY RET VOLT METER
WESCO RECEIVABLES CORP.	\$131.68	SPOOL INSULATOR
HEIDI WORSHECK	\$350.00	ENERGY STAR COOLING/HEATING REBATE
ZOOM VIDEO COMMUNICATIONS INC	\$6.41	ZOOM ONE BUS ANNUAL PRORATION
FURTHER - ACH	\$520.00	MEDICAL FLEX CLAIM REIMB.

Total Week of 12/22/2023

\$669,740.10

WEEK OF 12/29/2023

STEVEN ALVARADO	\$500.00 RESIDENTIAL SOLAR REBATE
ANCOM COMMUNICATIONS INC	\$557.72 WATER TRUCK #635 INSTALL RADIO
RYAN ANDERSON	\$500.00 RESIDENTIAL SOLAR REBATE
B & B TRANSFORMER INC	\$233,815.00 28 - 37.5 PAD RM TRANSFORMERS
BARR ENGINEERING CO.	\$13,756.22 WO#2683 ENG SVCS TANK 9
LISA BERGSTROM	\$350.00 ENERGY STAR COOLING/HEATING REBATE
BORDER STATES ELECTRIC SUPPLY	\$19,919.81 #6 COPPERWELD WIRE
CHARLIE BUETTNER	\$500.00 RESIDENTIAL SOLAR REBATE
CORE & MAIN LP	\$431.84 METERS
JOHN CROSBY	\$500.00 RESIDENTIAL SOLAR REBATE
LISA EILERS	\$500.00 ENERGY STAR COOLING/HEATING REBATE
JULIE ENGMARK	\$500.00 ENERGY STAR COOLING/HEATING REBATE
GRAINGER INC	\$14.31 WIRE CONNECTOR
GRAYBAR ELECTRIC COMPANY INC	\$296.71 PIPE 3" 45 DEG ELBOW-BELLED
ROXANNE GRIPENTROG	\$150.00 ENERGY STAR DISHWASHER REBATE
HERCULES INDUSTRIES INC	\$989.30 KEYS
MATTHEW HULLANDER	\$150.00 ENERGY STAR DISHWASHER REBATE
IRBY - STUART C IRBY CO	\$703.21 CLAMP
BEN JOHNSON	\$225.00 ENERGY STAR DISHWASHER REBATE
JT SERVICES	\$9,474.28 PULL TAPE
KENNEDY & GRAVEN, CHARTERED	\$72.00 WO#2634 WATER TRTMNT SITE ACQUISITION
CAMERON KIM	\$500.00 RESIDENTIAL SOLAR REBATE
KLM ENGINEERING INC	\$15,000.00 WO#2769 TANK #3 SPECIFICATION/BIDDING
ELLEN LARSON	\$150.00 ENERGY STAR DISHWASHER REBATE
KALPESH MEHTA	\$315.00 RESIDENTIAL SOLAR REBATE
CHET MEYER	\$175.00 ENERGY STAR CLOTHES WASHER REBATE
MID AMERICA METER INC	\$1,480.25 GASKET-O-RINGFLOW COM KIT
MINN VALLEY TESTING LABS INC	\$276.90 PICK UP CHARGE
MINNEBEAUTY BRIDAL	\$1,000.00 MR Refund PROJECT CANCELED
MN DEPT OF HEALTH	\$32.00 OPERATOR CLASS D KEVIN MENDEN
SAMUEL MOMAH	\$9.87 CORRECTION ON PAYROLL TAXES
MPOWER TECHNOLOGIES, INC.	\$3,300.00 AMI WO'S ADDL DAYS OF WORK METER CHG OUT
NAPA AUTO PARTS	\$196.55 WIRE KIT,LED TEST,FUEL TREAT(E)
GERRY NEVILLE	\$79.91 REIMBURSE 122 MILES
CINDY NICKOLAY	\$55.02 REIMBURSE 84 MILES
NPL CONSTRUCTION COMPANY	\$19,000.00 BORING 169 CROSSWALK
O'REILLY AUTOMOTIVE, INC.	\$13.45 MULTI-RELAY(W)
PATCHIN MESSNER & DODD	\$5,000.00 WO#2634 WATER TRTMNT FAC APPRAISAL
AARON PAUL	\$500.00 RESIDENTIAL SOLAR REBATE
AARON PFAFF	\$500.00 RESIDENTIAL SOLAR REBATE
SANMAR CORPORATION	\$30,009.00 PROJ#1245 LIGHTING REBATE
SANMAR CORPORATION	\$31,701.00 INTERIOR LIGHTING REBATE PROJ #1450
SHORT ELLIOTT HENDRICKSON INC	\$27,414.60 WO#2783 WATER FILL STATION
ANDREA SMIEJA	\$50.00 WATER SENSE TOILET REBATE
STAR ENERGY SERVICES	\$1,600.00 NOVA POWER PORTAL BLOCK OF APPS
STEPHEN TODD	\$500.00 ENERGY STAR COOLING/HEATING REBATE
TORO CORPORATION	\$31,551.00 PROJ #1076 LIGHTING/MOTOR CONT REBATE
DOUG TRIESTRAM	\$225.00 ENERGY STAR DISHWASHER REBATE
GREG TRIPLETT	\$101.52 REIMBURSE 155 MILES
TRUE NORTH CONTROLS	\$625.00 REPAIR OF GE MDS RADIO (WATER)
UNITED SYSTEMS & SOFTWARE INC	\$27,982.91 ITRON 500W MODULE STNDRD
WESCO RECEIVABLES CORP.	\$3,558.17 CONNECTOR WEDGE
PAMELA WOOD	\$500.00 ENERGY STAR COOLING/HEATING REBATE
WSB & ASSOCIATES INC.	\$10,647.00 WO#2581 NOV PROF SERVICES
MN CHILD SUPPORT PAYMENT CENTER	\$564.37 CASE#001422536402
FURTHER - ACH	\$1,555.91 DAYCARE FLEX CLAIM REIMB
ZAYO GROUP, LLC	\$2,890.00 DEC. T1 LINE/SHAKO S SUB/PIKE LAKE
PAYROLL DIRECT DEPOSIT 12.29.23	\$128,027.30
BENEFITS & TAXES FOR 12.29.23	\$137,780.76

Total Week of 12/29/2023

\$768,772.89

Grand Total

\$8,019,456.80

Kelly Williams

Presented for approval by: Director of Finance & Administration

Approved by General Manager


Approved by Commission President



Proposed As Consent Item

3d

PO Box 470 • 255 Sarazin Street
Shakopee, Minnesota 55379
Main 952.445-1988 • Fax 952.445-7767
www.shakopeeutilities.com

To: SPU Commissioners
From: Greg Drent, General Manager 
Date: December 20, 2023
Subject: MMPA December 2023 Meeting Update

The Board of Directors of the Minnesota Municipal Power Agency (MMPA) met on December 19, 2023, at Chaska City Hall in Chaska, Minnesota and via videoconference.

The Board reviewed the Agency's financial and operating performance for November 2023.

Customer penetration for the residential Clean Energy Choice program increased to 5.3%. There was an increase of 48 customers participating in the residential Clean Energy Choice program from October to November.

The Board discussed the current business environment.

The Board approved rates for 2024, which are the same as 2023 rates.

The Board discussed the status of renewable projects the Agency is pursuing.

The Board was informed that the Hometown BioEnergy Renewable Natural Gas (RNG) project has achieved commercial operation.

The following officers were elected for 2024: Matt Podhradsky – Chairman, Keith Mykleseth – Vice Chairman, Greg Drent – Treasurer, Mark Hanson – Secretary.

Monthly Water Dashboard

As of: December 2023

Shakopee Public Utilities Commission

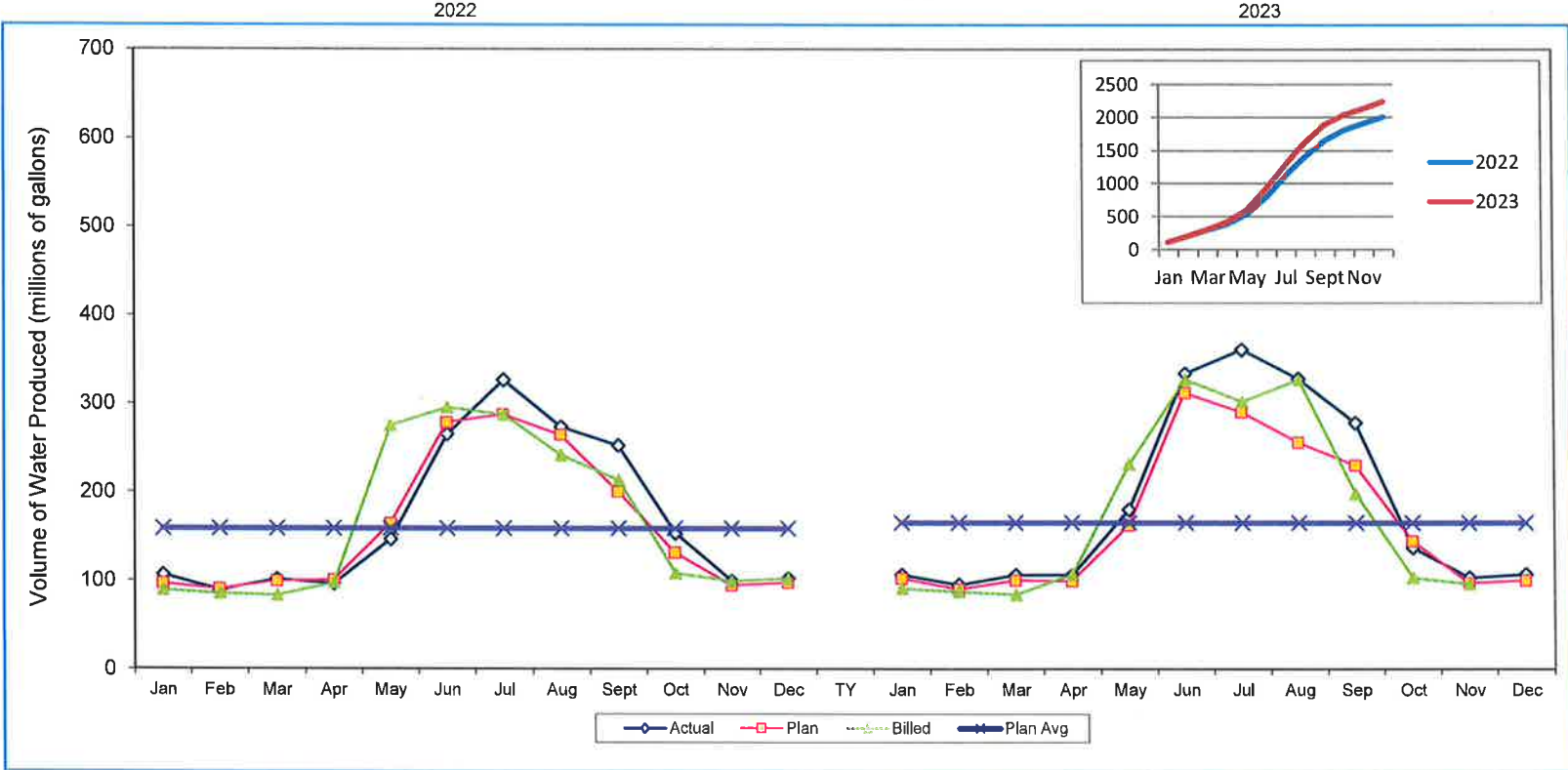
ALL VALUES IN MILLIONS OF GALLONS

Element/Measure

Water Pumped/Metered

Monthly Avg
 2020 150
 2021 173
 2022 167

Last 6 months actuals	361	328	278	137	103	107
-----------------------	-----	-----	-----	-----	-----	-----





	LY												TY											
	Jan	Feb	Mar	Apr	May	Jun	Jul	Aug	Sept	Oct	Nov	Dec	Jan	Feb	Mar	Apr	May	Jun	Jul	Aug	Sept	Oct	Nov	Dec
Actual	106	89	101	96	146	265	326	273	252	153	99	102	106	95	106	106	180	334	361	328	278	137	103	107
Plan	96	90	99	100	164	278	287	264	200	131	94	97	102	90	100	99	162	312	290	256	230	144	97	100
YTD % *													104%	105%	105%	106%	107%	107%	112%	115%	115%	114%	113%	113%
Billed	89	85	83	97	275	295	287	241	213	108	99	102	91	87	84	107	231	327	302	327	198	103	96	

* Actual gallons pumped vs. Plan

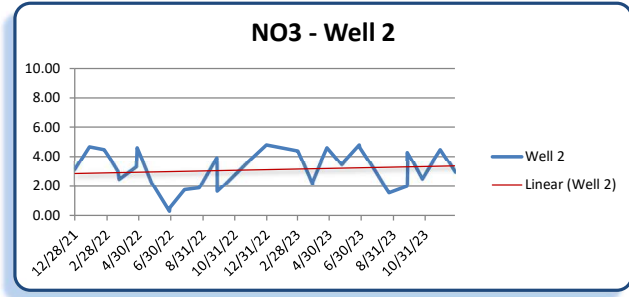


PO Box 470 • 255 Sarazin Street
Shakopee, Minnesota 55379
Main 952.445-1988 • Fax 952.445-7767
www.shakopeeutilities.com

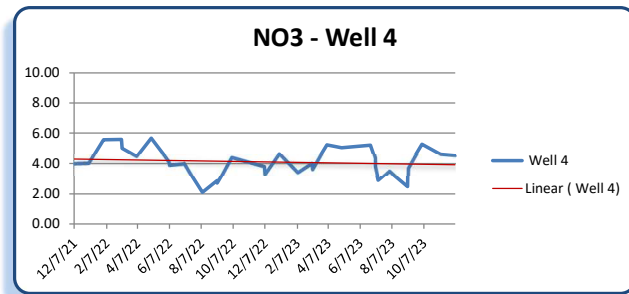
TO: Greg Drent, General Manager 
FROM: Lon R. Schemel, Water Superintendent 
SUBJECT: Nitrate Results - Advisory
DATE: January 2, 2024

Attached are the latest nitrate test results for our production wells. The analyses provided are for the prior 2 years of data collected with trend graphs.

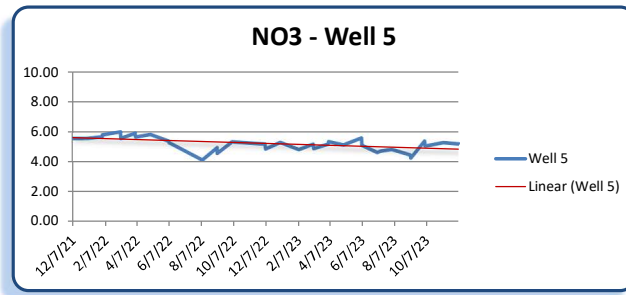
Location	Sample Collected	Results Received	Results	Lab
2	12/28/21	1/10/22	3.13	MVTL
2	1/25/22	2/7/22	4.66	MVTL
2	2/22/22	3/4/22	4.47	MVTL
2	3/21/22	4/6/22	3.00	MDH
2	3/23/22	4/6/22	2.48	MVTL
2	4/25/22	5/23/22	3.30	MDH
2	4/26/22	4/28/22	4.59	MVTL
2	5/24/22	6/6/22	2.27	MVTL
2	6/27/22	8/16/22	0.30	MDH
2	6/28/22	7/11/22	0.52	MVTL
2	7/26/22	8/4/22	1.78	MVTL
2	8/23/22	9/9/22	1.90	MVTL
2	9/26/22	10/25/22	3.90	MDH
2	9/27/22	10/10/22	1.66	MVTL
2	12/30/22	4/6/23	4.80	MDH
2	2/28/23	3/10/23	4.38	MVTL
2	3/28/23	4/4/23	2.18	MVTL
2	3/28/23	6/13/23	2.30	MDH
2	4/25/23	5/4/23	4.60	MVTL
2	5/23/23	6/7/23	3.44	MVTL
2	6/26/23	7/19/23	4.80	MDH
2	6/27/23	6/30/23	4.61	MVTL
2	8/22/23	10/4/23	1.55	MVTL
2	9/25/23	10/26/23	2.00	MDH
2	9/26/23	10/4/23	4.26	MVTL
2	10/24/23	10/26/23	2.51	MVTL
2	11/28/23	12/7/23	4.48	MVTL
2	12/26/23	12/27/23	2.96	MVTL



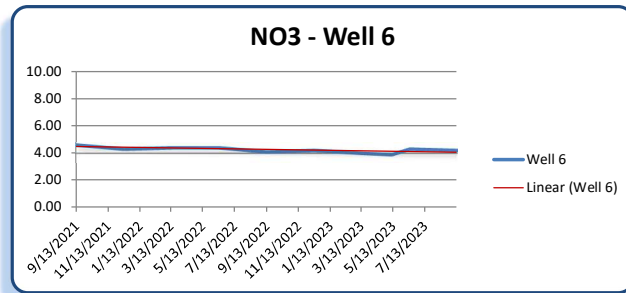
4	12/7/21	12/15/21	3.99	MVTL
4	1/4/22	1/12/22	4.02	MVTL
4	2/1/22	2/28/22	5.56	MVTL
4	3/7/22	4/6/22	5.60	MDH
4	3/8/22	3/14/22	4.99	MVTL
4	4/5/22	4/12/22	4.46	MVTL
4	5/3/22	5/12/22	5.67	MVTL
4	6/6/22	7/11/22	4.10	MDH
4	6/7/22	6/9/22	3.89	MVTL
4	7/5/22	7/18/22	3.98	MVTL
4	7/5/22	7/18/22	4.00	MDH
4	8/9/22	8/18/22	2.09	MVTL
4	9/6/22	9/19/22	2.87	MVTL
4	9/6/22	10/25/22	2.70	MDH
4	10/4/22	10/11/22	4.38	MVTL
4	12/5/22	2/9/23	3.80	MDH
4	12/6/22	12/8/22	3.30	MVTL
4	1/3/23	3/10/23	4.62	MVTL
4	2/7/23	3/10/23	3.43	MVTL
4	3/6/23	4/6/23	4.00	MDH
4	3/7/23	3/10/23	3.62	MVTL
4	4/4/23	4/6/23	5.23	MVTL
4	5/2/23	5/5/23	5.03	MVTL
4	6/26/23	9/27/23	5.20	MDH
4	7/5/23	7/19/23	4.35	MVTL
4	7/5/23	7/19/23	3.80	MDH
4	7/11/23	7/14/23	2.90	MVTL
4	8/1/23	8/7/23	3.51	MVTL
4	9/5/23	9/14/23	2.47	MVTL
4	9/6/23	10/26/23	3.70	MDH
4	10/3/23	10/12/23	5.26	MVTL
4	11/7/23	11/9/23	4.59	MVTL
4	12/5/23	12/7/23	4.52	MVTL



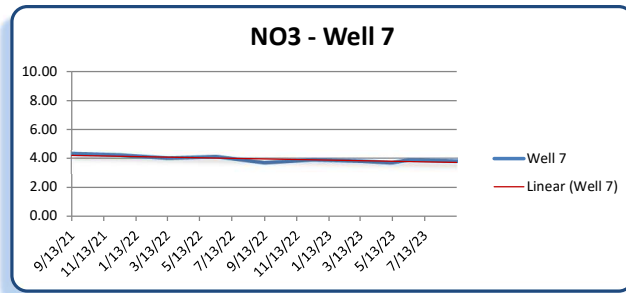
Location	Sample Collected	Results Received	Results	Lab
5	12/7/21	12/15/21	5.56	MVTL
5	1/4/22	1/12/22	5.58	MVTL
5	2/1/22	2/28/22	5.67	MVTL
5	2/1/22	3/14/22	5.80	MDH
5	3/7/22	4/6/22	6.00	MDH
5	3/8/22	3/14/22	5.58	MVTL
5	4/4/22	5/12/22	5.90	MDH
5	4/5/22	4/12/22	5.66	MVTL
5	5/3/22	5/12/22	5.83	MVTL
5	6/6/22	7/11/22	5.40	MDH
5	6/7/22	6/9/22	5.30	MVTL
5	8/9/22	8/18/22	4.18	MVTL
5	9/6/22	9/19/22	4.98	MVTL
5	9/6/22	10/25/22	4.60	MDH
5	10/4/22	10/11/22	5.35	MVTL
5	12/5/22	2/9/23	5.20	MDH
5	12/6/22	12/8/22	4.89	MVTL
5	1/3/23	3/10/23	5.32	MVTL
5	2/7/23	3/10/23	4.85	MVTL
5	3/6/23	4/6/23	5.20	MDH
5	3/7/23	3/10/23	4.92	MVTL
5	4/3/23	5/16/23	5.20	MDH
5	4/4/23	4/6/23	5.37	MVTL
5	5/2/23	5/5/23	5.15	MVTL
5	6/5/23	7/19/23	5.60	MDH
5	6/6/23	6/12/23	5.13	MVTL
5	7/5/23	7/19/23	4.67	MVTL
5	7/11/23	7/14/23	4.75	MVTL
5	8/1/23	8/7/23	4.87	MVTL
5	9/5/23	9/14/23	4.50	MVTL
5	9/6/23	10/26/23	4.30	MDH
5	10/2/23	11/2/23	5.40	MDH
5	10/3/23	10/12/23	5.08	MVTL
5	11/7/23	11/9/23	5.30	MVTL
5	12/5/23	12/7/23	5.22	MVTL



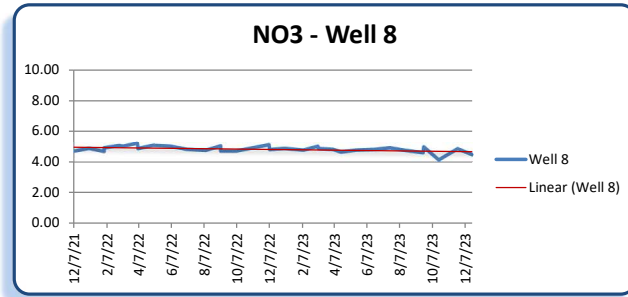
6	9/13/2021	9/29/21	4.60	MDH
6	12/13/2021	1/31/22	4.30	MDH
6	3/14/2022	4/6/22	4.40	MDH
6	6/13/2022	7/11/22	4.40	MDH
6	9/12/2022	10/25/22	4.10	MDH
6	12/12/2022	2/9/23	4.20	MDH
6	3/13/2023	4/6/23	4.00	MDH
6	5/9/2023	5/16/23	3.90	MVTL
6	6/12/2023	7/19/23	4.30	MDH
6	9/11/2023	10/26/23	4.20	MDH



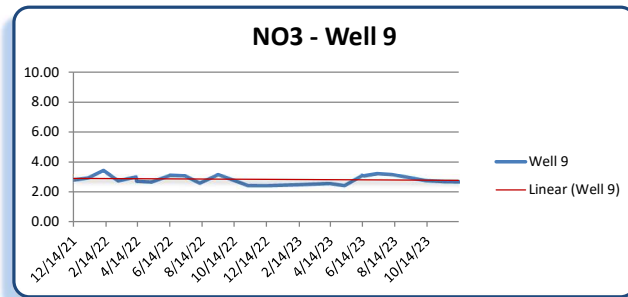
7	9/13/21	9/29/21	4.30	MDH
7	12/13/21	1/31/22	4.20	MDH
7	3/14/22	4/6/22	4.00	MDH
7	6/13/22	7/11/22	4.10	MDH
7	9/12/22	10/25/22	3.70	MDH
7	12/12/22	2/9/23	3.90	MDH
7	3/13/23	4/6/23	3.80	MDH
7	5/9/23	5/16/23	3.70	MVTL
7	6/12/23	7/19/23	3.90	MDH
7	9/11/23	10/26/23	3.80	MDH



Location	Sample Collected	Results Received	Results	Lab
8	12/7/21	12/15/21	4.70	MVTL
8	1/4/22	1/12/22	4.87	MVTL
8	2/1/22	2/28/22	4.67	MVTL
8	2/1/22	3/14/22	4.90	MDH
8	3/1/22	3/8/22	5.05	MVTL
8	3/8/22	4/6/22	5.00	MDH
8	4/4/22	5/12/22	5.20	MDH
8	4/5/22	4/12/22	4.85	MVTL
8	5/3/22	5/12/22	5.06	MVTL
8	6/6/22	7/11/22	5.00	MDH
8	6/7/22	6/9/22	4.99	MVTL
8	7/5/22	7/18/22	4.80	MVTL
8	7/5/22	11/8/22	4.80	MDH
8	8/9/22	8/18/22	4.74	MVTL
8	9/6/22	9/19/22	5.02	MVTL
8	9/6/22	10/25/22	4.70	MDH
8	10/4/22	10/11/22	4.69	MVTL
8	12/5/22	2/9/23	5.10	MDH
8	12/6/22	12/8/22	4.79	MVTL
8	1/3/23	3/10/23	4.86	MVTL
8	2/7/23	3/10/23	4.76	MVTL
8	3/6/23	4/6/23	5.00	MDH
8	3/7/23	3/10/23	4.85	MVTL
8	4/3/23	5/16/23	4.80	MDH
8	4/18/23	5/4/23	4.63	MVTL
8	5/16/23	5/25/23	4.76	MVTL
8	6/21/23	9/27/23	4.80	MDH
8	7/18/23	7/20/23	4.90	MVTL
8	8/15/23	8/16/23	4.74	MVTL
8	9/18/23	10/26/23	4.60	MDH
8	9/19/23	9/27/23	4.96	MVTL
8	10/17/23	10/26/23	4.14	MVTL
8	11/21/23	12/7/23	4.84	MVTL
8	12/19/23	12/21/23	4.47	MVTL

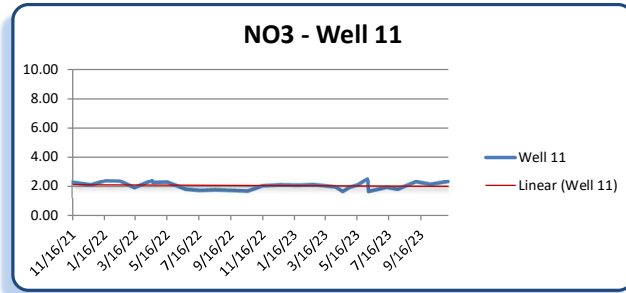


9	12/14/21	12/27/21	2.79	MVTL
9	1/11/22	1/31/22	2.94	MVTL
9	2/8/22	2/23/22	3.43	MVTL
9	3/8/22	3/14/22	2.74	MVTL
9	4/11/22	4/26/22	3.00	MDH
9	4/12/22	4/22/22	2.72	MVTL
9	5/10/22	5/18/22	2.67	MVTL
9	6/14/22	6/23/22	3.10	MVTL
9	7/12/22	7/27/22	3.08	MVTL
9	8/9/22	8/18/22	2.60	MVTL
9	9/13/22	9/21/22	3.16	MVTL
9	11/8/22	11/10/22	2.44	MVTL
9	12/13/22	12/14/22	2.43	MVTL
9	2/14/23	2/16/23	2.49	MVTL
9	4/11/23	10/4/23	2.57	MVTL
9	5/9/23	5/16/23	2.44	MVTL
9	6/12/23	7/19/23	3.10	MDH
9	6/15/23	6/22/23	3.07	MVTL
9	7/11/23	7/14/23	3.21	MVTL
9	8/8/23	8/10/23	3.16	MVTL
9	10/10/23	10/12/23	2.76	MVTL
9	11/14/23	11/20/23	2.70	MVTL
9	12/12/23	12/13/23	2.68	MVTL

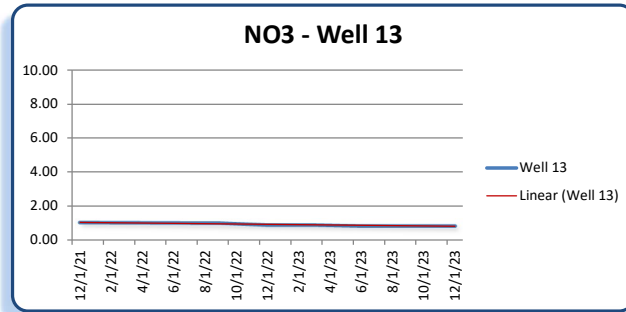


10	4/17/12	4/20/12	< 1.00	TCWC
10	1/21/14	1/29/14	< 1.00	TCWC
10	3/25/14	4/1/14	3.61	MVTL
10	4/23/14	5/7/14	< 0.20	MVTL
10	4/23/14	6/16/14	< 0.05	MDH
10	6/16/15	6/26/15	< 0.05	MVTL
10	4/11/17	4/17/17	< 0.05	MVTL
10	1/8/19	1/14/19	< 0.05	MVTL
10	7/9/19	7/24/19	< 0.05	MVTL
10	10/12/21	10/20/21	< 0.05	MVTL
10	5/9/23	5/16/23	< 0.05	MVTL

Location	Sample Collected	Results Received	Results	Lab
11	11/16/21	12/2/21	2.27	MVTL
11	12/21/21	12/30/21	2.10	MVTL
11	1/18/22	1/31/22	2.37	MVTL
11	2/15/22	2/28/22	2.36	MVTL
11	3/15/22	3/17/22	1.92	MVTL
11	4/18/22	5/12/22	2.40	MDH
11	4/19/22	4/28/22	2.25	MVTL
11	5/17/22	5/27/22	2.28	MVTL
11	6/21/22	6/23/22	1.82	MVTL
11	7/19/22	7/28/22	1.75	MVTL
11	8/16/22	8/30/22	1.78	MVTL
11	9/20/22	9/29/22	1.74	MVTL
11	10/18/22	10/21/22	1.71	MVTL
11	11/15/22	12/21/22	2.04	MVTL
11	12/20/22	12/21/22	2.10	MVTL
11	1/24/23	3/10/23	2.08	MVTL
11	2/21/23	2/28/23	2.11	MVTL
11	4/4/23	4/6/23	1.98	MVTL
11	4/18/23	5/4/23	1.68	MVTL
11	5/2/23	5/5/23	1.96	MVTL
11	5/16/23	5/25/23	2.09	MVTL
11	6/5/23	7/19/23	2.50	MDH
11	6/6/23	6/12/23	1.68	MVTL
11	7/11/23	7/14/23	1.95	MVTL
11	8/1/23	8/7/23	1.82	MVTL
11	9/5/23	9/14/23	2.30	MVTL
11	10/3/23	10/12/23	2.14	MVTL
11	11/7/23	11/9/23	2.33	MVTL



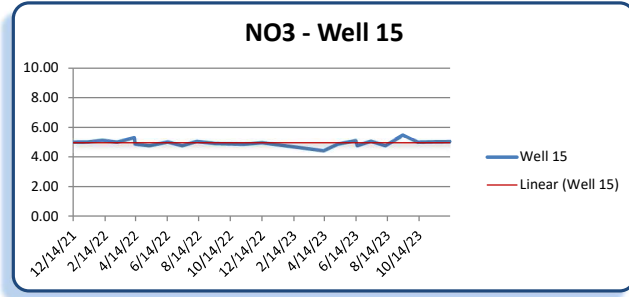
12	12/8/20	12/28/20	0.69	MVTL
12	3/9/21	3/23/21	0.60	MVTL
12	6/1/21	6/7/21	0.57	MVTL
12	9/14/21	9/29/21	0.59	MVTL
12	12/14/21	12/27/21	0.50	MVTL
12	3/23/22	4/6/22	0.48	MVTL
12	6/14/22	6/23/22	0.49	MVTL
12	9/13/22	9/21/22	0.46	MVTL
12	12/13/22	12/14/22	0.46	MVTL



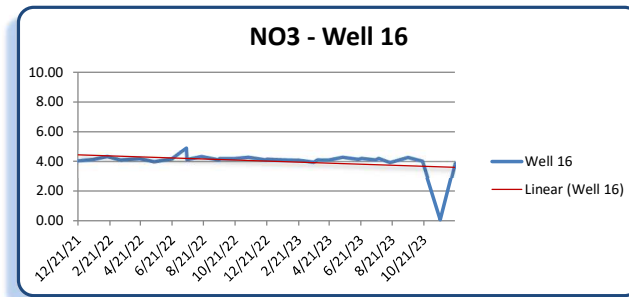
13	12/7/21	12/15/21	1.03	MVTL
13	9/6/22	9/19/22	1.00	MVTL
13	12/6/22	12/8/22	0.89	MVTL
13	3/7/23	3/10/23	0.89	MVTL
13	6/6/23	6/12/23	0.83	MVTL
13	12/5/23	12/7/23	0.83	MVTL

14	4/23/14	6/16/14	< 0.05	MDH
14	4/11/17	4/17/17	< 0.05	MVTL
14	9/5/17	9/26/17	< 0.05	MVTL
14	12/5/17	12/22/17	< 0.05	MVTL
14	3/6/18	3/26/18	< 0.05	MVTL
14	6/5/18	6/14/18	< 0.05	MVTL

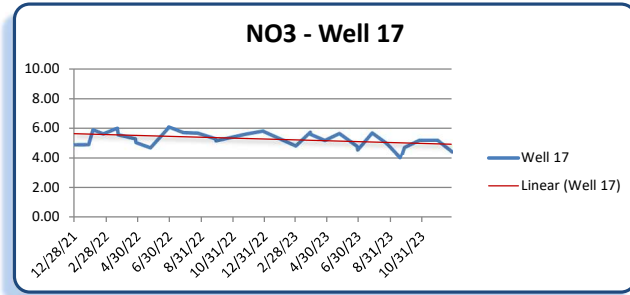
Location	Sample Collected	Results Received	Results	Lab
15	12/14/21	12/27/21	5.00	MVTL
15	1/11/22	1/31/22	5.02	MVTL
15	2/8/22	2/23/22	5.13	MVTL
15	3/8/22	3/14/22	5.00	MVTL
15	4/11/22	4/26/22	5.30	MDH
15	4/12/22	4/22/22	4.88	MVTL
15	5/10/22	5/18/22	4.76	MVTL
15	6/14/22	6/23/22	5.01	MVTL
15	7/12/22	7/27/22	4.76	MVTL
15	8/9/22	8/18/22	5.05	MVTL
15	9/13/22	9/21/22	4.92	MVTL
15	11/8/22	11/10/22	4.86	MVTL
15	12/13/22	12/14/22	4.96	MVTL
15	4/11/23	10/4/23	4.43	MVTL
15	5/9/23	5/16/23	4.88	MVTL
15	6/12/23	7/19/23	5.10	MDH
15	6/15/23	6/22/23	4.77	MVTL
15	7/11/23	7/14/23	5.07	MVTL
15	8/8/23	8/10/23	4.77	MVTL
15	9/12/23	9/14/23	5.47	MVTL
15	10/10/23	10/12/23	5.00	MVTL
15	11/14/23	11/20/23	5.03	MVTL
15	12/12/23	12/13/23	5.04	MVTL



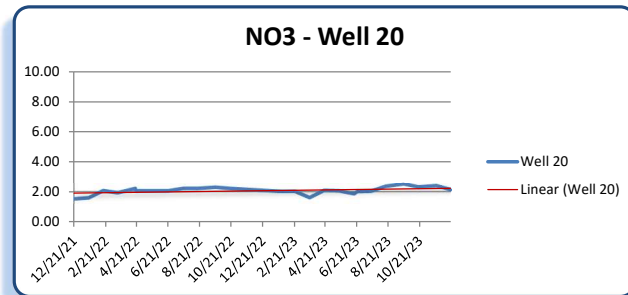
16	12/21/21	12/30/21	4.04	MVTL
16	1/18/22	1/31/22	4.12	MVTL
16	2/15/22	2/28/22	4.32	MVTL
16	3/15/22	3/17/22	4.07	MVTL
16	3/15/22	4/6/22	4.10	MDH
16	4/19/22	4/28/22	4.19	MVTL
16	5/17/22	5/27/22	3.97	MVTL
16	6/21/22	6/23/22	4.17	MVTL
16	6/21/22	7/11/22	4.20	MDH
16	7/18/22	8/16/22	4.90	MDH
16	7/19/22	7/28/22	4.13	MVTL
16	8/16/22	8/30/22	4.33	MVTL
16	9/19/22	10/25/22	4.10	MDH
16	9/20/22	9/29/22	4.19	MVTL
16	10/18/22	10/21/22	4.19	MVTL
16	11/15/22	12/21/22	4.28	MVTL
16	12/19/22	4/6/23	4.10	MDH
16	12/20/22	12/21/22	4.15	MVTL
16	1/24/23	3/10/23	4.10	MVTL
16	2/21/23	2/28/23	4.08	MVTL
16	3/21/23	3/29/23	3.95	MVTL
16	3/28/23	6/13/23	4.10	MDH
16	4/18/23	5/4/23	4.09	MVTL
16	5/16/23	5/25/23	4.28	MVTL
16	6/15/23	6/22/23	4.14	MVTL
16	6/21/23	9/27/23	4.20	MDH
16	7/18/23	7/20/23	4.10	MVTL
16	7/24/23	8/10/23	4.20	MDH
16	8/15/23	8/16/23	3.92	MVTL
16	9/19/23	9/27/23	4.26	MVTL
16	10/17/23	10/26/23	4.01	MVTL
16	11/21/23	12/7/23	< 0.05	MVTL
16	12/19/23	12/21/23	3.86	MVTL



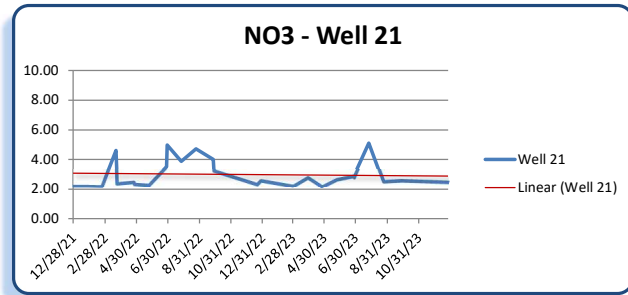
Location	Sample Collected	Results Received	Results	Lab
17	12/28/21	1/10/22	4.90	MVTL
17	1/25/22	2/7/22	4.91	MVTL
17	2/2/22	4/25/22	5.90	MDH
17	2/22/22	3/4/22	5.62	MVTL
17	3/21/22	4/6/22	6.00	MDH
17	3/23/22	4/6/22	5.56	MVTL
17	4/25/22	6/2/22	5.30	MDH
17	4/26/22	4/28/22	5.05	MVTL
17	5/24/22	6/6/22	4.70	MVTL
17	6/27/22	8/16/22	6.00	MDH
17	6/28/22	7/11/22	6.09	MVTL
17	7/26/22	8/4/22	5.71	MVTL
17	8/23/22	9/9/22	5.67	MVTL
17	9/26/22	10/25/22	5.30	MDH
17	9/27/22	10/10/22	5.16	MVTL
17	11/22/22	3/10/23	5.60	MDH
17	12/27/22	2/24/23	5.81	MVTL
17	12/27/22	4/6/23	5.80	MDH
17	2/28/23	3/10/23	4.82	MVTL
17	3/28/23	4/4/23	5.74	MVTL
17	3/28/23	6/13/23	5.60	MDH
17	4/24/23	5/25/23	5.20	MDH
17	4/25/23	5/4/23	5.18	MVTL
17	5/23/23	6/7/23	5.65	MVTL
17	6/26/23	9/27/23	4.80	MDH
17	6/27/23	6/30/23	4.55	MVTL
17	7/25/23	7/31/23	5.69	MVTL
17	8/22/23	10/4/23	4.98	MVTL
17	9/18/23	10/26/23	4.00	MDH
17	9/25/23	10/26/23	4.70	MDH
17	9/26/23	10/4/23	4.74	MVTL
17	10/24/23	10/26/23	5.20	MVTL
17	11/28/23	12/7/23	5.20	MVTL
17	12/26/23	12/27/23	4.42	MVTL



20	12/21/21	12/30/21	1.54	MVTL
20	1/18/22	1/31/22	1.60	MVTL
20	2/15/22	2/28/22	2.06	MVTL
20	3/15/22	3/17/22	1.93	MVTL
20	4/18/22	5/12/22	2.20	MDH
20	4/19/22	4/28/22	2.05	MVTL
20	5/17/22	5/27/22	2.05	MVTL
20	6/21/22	6/23/22	2.05	MVTL
20	7/19/22	7/28/22	2.20	MVTL
20	8/16/22	8/30/22	2.20	MVTL
20	9/20/22	9/29/22	2.28	MVTL
20	10/18/22	10/21/22	2.20	MVTL
20	1/24/23	3/10/23	2.01	MVTL
20	2/21/23	2/28/23	2.01	MVTL
20	3/21/23	3/29/23	1.62	MVTL
20	4/18/23	5/4/23	2.08	MVTL
20	5/16/23	5/25/23	2.05	MVTL
20	6/15/23	6/22/23	1.86	MVTL
20	6/21/23	7/19/23	2.00	MDH
20	7/18/23	7/20/23	2.03	MVTL
20	8/15/23	8/16/23	2.34	MVTL
20	9/19/23	9/27/23	2.49	MVTL
20	10/17/23	10/26/23	2.30	MVTL
20	11/21/23	12/7/23	2.37	MVTL
20	12/19/23	12/21/23	2.12	MVTL

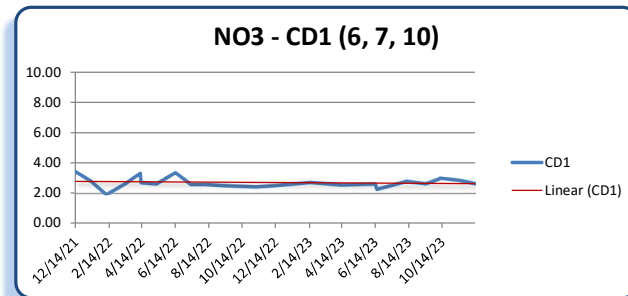


Location	Sample Collected	Results Received	Results	Lab
21	12/28/21	1/10/22	2.22	MVTL
21	1/25/22	2/7/22	2.22	MVTL
21	2/22/22	3/4/22	2.20	MVTL
21	3/21/22	4/6/22	4.60	MDH
21	3/23/22	4/6/22	2.40	MVTL
21	4/25/22	5/23/22	2.50	MDH
21	4/26/22	4/28/22	2.36	MVTL
21	5/24/22	6/6/22	2.30	MVTL
21	6/27/22	8/16/22	3.50	MDH
21	6/28/22	7/11/22	4.97	MVTL
21	7/26/22	8/4/22	3.87	MVTL
21	8/23/22	9/9/22	4.70	MVTL
21	9/26/22	10/25/22	4.00	MDH
21	9/27/22	10/6/22	3.24	MVTL
21	12/20/22	12/21/22	2.34	MVTL
21	12/27/22	4/6/23	2.60	MDH
21	2/28/23	3/10/23	2.23	MVTL
21	3/28/23	4/4/23	2.78	MVTL
21	3/28/23	6/13/23	2.80	MDH
21	4/25/23	5/4/23	2.19	MVTL
21	5/23/23	6/7/23	2.66	MVTL
21	6/26/23	7/19/23	2.90	MDH
21	6/26/23	9/27/23	2.80	MDH
21	6/27/23	6/30/23	2.91	MVTL
21	7/25/23	7/31/23	5.09	MVTL
21	8/22/23	10/3/23	2.53	MVTL
21	9/25/23	10/26/23	2.60	MDH
21	9/26/23	10/3/23	2.60	MVTL
21	12/26/23	12/27/23	2.50	MVTL



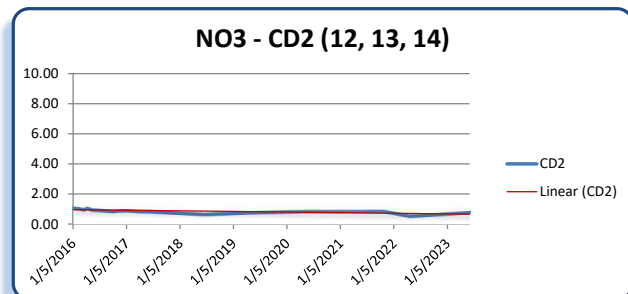
Combined Discharge - Wells 6-7-10

CD 1	12/14/21	12/27/21	3.39	MVTL
CD 1	1/11/22	1/31/22	2.79	MVTL
CD 1	2/8/22	2/23/22	1.92	MVTL
CD 1	3/15/22	3/17/22	2.63	MVTL
CD 1	4/11/22	4/26/22	3.30	MDH
CD 1	4/12/22	4/22/22	2.69	MVTL
CD 1	5/10/22	5/18/22	2.60	MVTL
CD 1	6/14/22	6/23/22	3.33	MVTL
CD 1	7/12/22	7/27/22	2.57	MVTL
CD 1	8/9/22	8/18/22	2.57	MVTL
CD 1	9/13/22	9/21/22	2.49	MVTL
CD 1	11/8/22	11/10/22	2.42	MVTL
CD 1	12/13/22	12/14/22	2.50	MVTL
CD 1	2/14/23	2/16/23	2.70	MVTL
CD 1	4/11/23	10/4/23	2.54	MVTL
CD 1	6/12/23	7/19/23	2.60	MDH
CD 1	6/15/23	6/22/23	2.26	MVTL
CD 1	7/11/23	7/14/23	2.51	MVTL
CD 1	8/8/23	8/10/23	2.78	MVTL
CD 1	9/12/23	9/14/23	2.62	MVTL
CD 1	10/10/23	10/12/23	2.97	MVTL
CD 1	11/14/23	11/20/23	2.83	MVTL
CD 1	12/12/23	12/13/23	2.62	MVTL



Combined Discharge - Wells 12-13-14

CD 2	1/5/2016	1/13/2016	1.08	MVTL
CD 2	2/23/2016	2/29/2016	1.03	MVTL
CD 2	3/22/2016	3/28/2016	0.96	MVTL
CD 2	4/12/2016	4/19/2016	1.07	MVTL
CD 2	5/10/2016	5/16/2016	0.98	MVTL
CD 2	5/10/2016	6/2/2016	0.97	MDH
CD 2	7/12/2016	7/18/2016	0.93	MVTL
CD 2	10/11/2016	10/17/2016	0.87	MVTL
CD 2	11/8/2016	11/17/2016	0.91	MVTL
CD 2	1/10/2017	1/20/2017	0.92	MVTL
CD 2	4/11/2017	4/17/2017	0.85	MVTL
CD 2	6/8/2017	6/28/2017	0.86	MDH
CD 2	6/22/2018	7/18/2018	0.67	MDH
CD 2	4/16/2019	5/1/2019	0.78	MDH
CD 2	4/27/2020	6/5/2020	0.86	MDH
CD 2	10/25/2021	11/15/2021	0.87	MDH
CD 2	4/25/2022	5/23/2022	0.56	MDH
CD 2	6/5/2023	7/19/2023	0.79	MDH



RESOLUTION #2024-01

A RESOLUTION APPROVING PAYMENT FOR THE PIPE OVERSIZING
COSTS ON THE WATERMAIN PROJECT:

VALLEY CREST 1ST, VALLEY CREST 2ND, and VALLEY CREST 3RD ADDITIONS

WHEREAS, the Shakopee Public Utilities Commission had previously approved of an estimated amount of \$105,000.00 with Resolution #2021-15 for oversizing on the above described watermain projects, and

WHEREAS, the pipe sizes required for that project have been installed as shown on the engineering drawings by Pioneer Engineering Inc., and

WHEREAS, a part, or all, of the project contains pipe sizes larger than would be required under the current Standard Watermain Design Criteria as adopted by the Shakopee Public Utilities Commission, and

WHEREAS, the policy of the Shakopee Public Utilities Commission calls for the payment of these costs to install oversize pipe above the standard size.

NOW THEREFORE, BE IT RESOLVED, that the payment by the Shakopee Public Utilities Commission for the oversizing on this project is approved in the amount of \$169,403.63, and

BE IT FURTHER RESOLVED, that all things necessary to carry out the terms and purpose of this Resolution are hereby authorized and performed.

Passed in regular session of the Shakopee Public Utilities Commission, this 8th day of January, 2024.

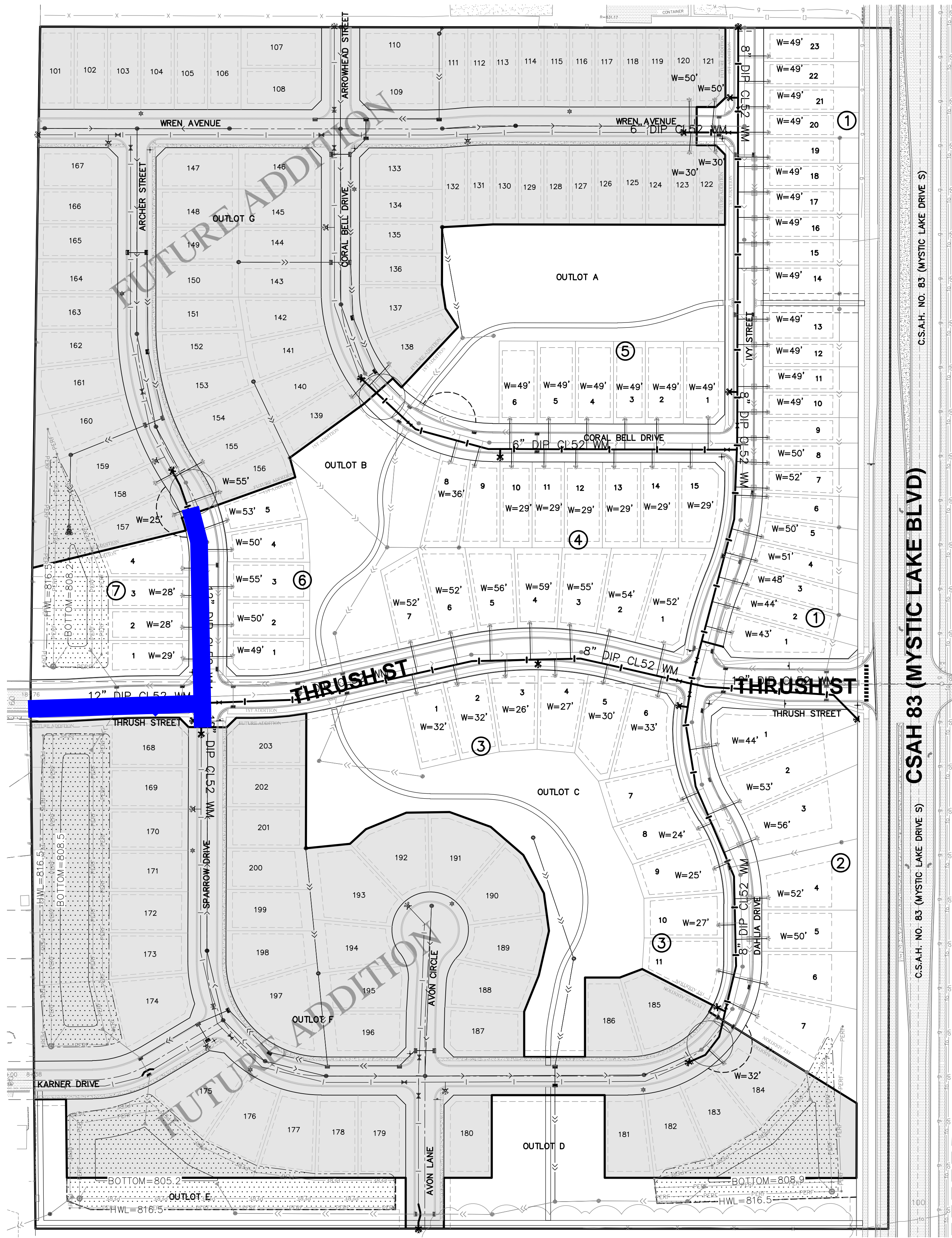
Commission President: Justin Krieg

ATTEST:

Commission Secretary: Greg Drent

VALLEY CREST 1ST ADDITION

Resolution #2024-01



LEGEND:

FUTURE CONSTRUCTION

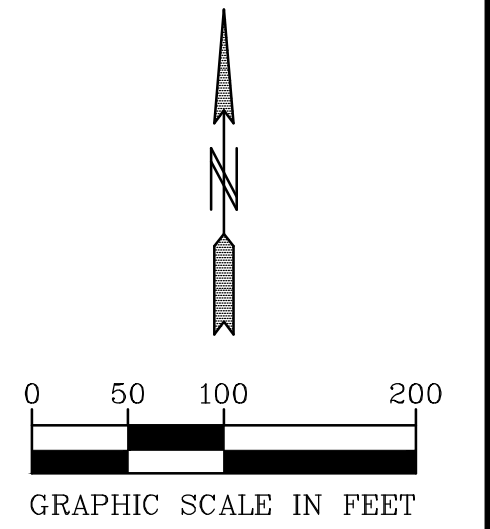
SPUC APPROVAL	CITY APPROVAL	DATE	REVISION

APPROVED FOR ONE YEAR FROM THIS DATE

SHAKOPEE PUBLIC UTILITIES COMMISSION _____ DATE _____

ALL MATERIALS & CONSTRUCTION METHODS SHALL COMPLY WITH SHAKOPEE PUBLIC UTILITIES COMMISSION WATER POLICY MANUAL DATED AUGUST 04, 2014.

OVERSIZING 8" DIP to 12" DIP



BENCH MARK
 MN DOT MONUMENT BLASCHKO
 AT TRUNK HIGHWAY 169 AND
 COUNTY ROAD 83
 ELEV.=774.78

01-ENG-121089-SHEET-OVERALL-WATR



2422 Enterprise Drive
 Mendota Heights, MN 55120
 (651) 681-1914
 Fax: 681-9488
 www.pioneereng.com

I hereby certify that this plan was prepared by me or under my direct supervision and that I am a duly Licensed Professional Engineer under the laws of the State of Minnesota.

Name: John M. Molinaro
 Reg. No.: 45831
 Date: 06-16-2021

Revisions:
 1. 06-23-21 - Internal Comments
 2. 08-03-21 - City Comments
 3. 09-09-21 - Internal Comments
 4. 08-20-21 - City Comments
 5. 09-07-21 - City Comments
 6. 09-22-21 - SPUC Comments

Date: 06-16-2021
 Designed: JMM
 Drawn: JMM/PDS

OVERALL WATERMAIN

M/I HOMES
 5354 PARKDALE DR, #100
 ST. LOUIS PARK, MINNESOTA 55416

VALLEY CREST 1ST ADDITION
 SHAKOPEE, MINNESOTA

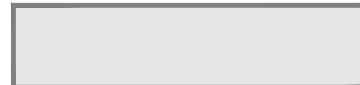
5 OF 86


VALLEY CREST 2ND ADDITION


Resolution #2024-01

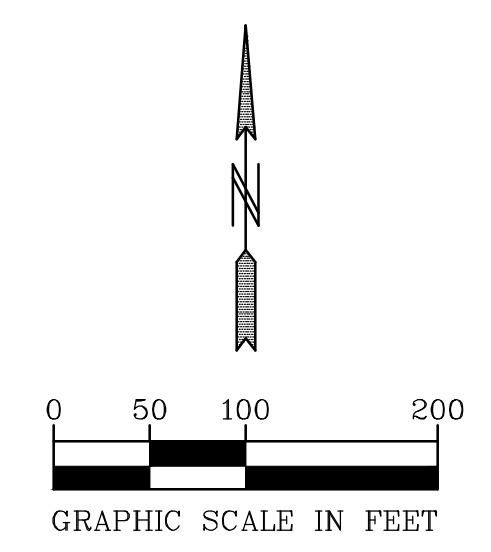
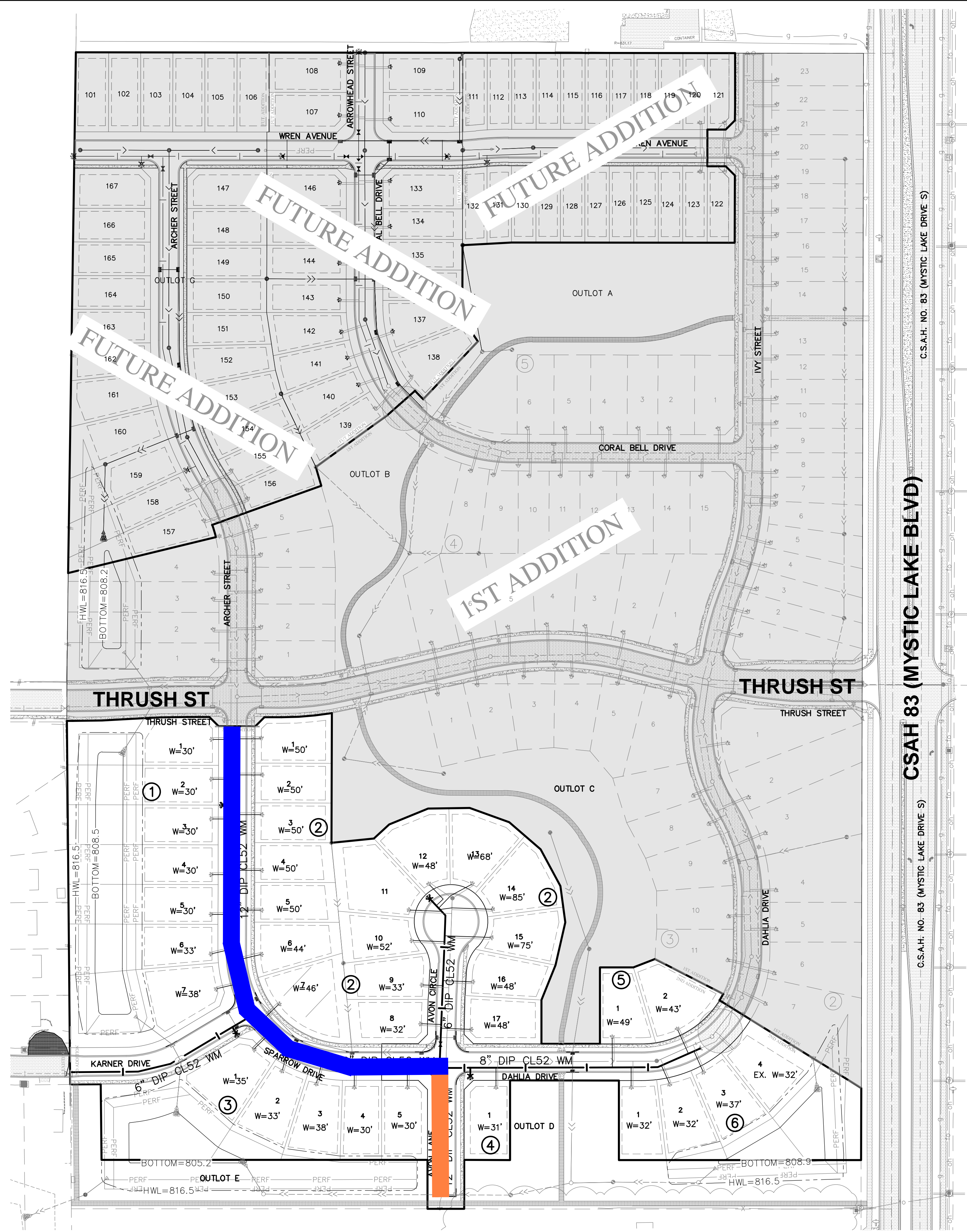
SPUC APPROVAL	CITY APPROVAL	DATE	REVISION
APPROVED FOR ONE YEAR FROM THIS DATE			
SHAKOPEE PUBLIC UTILITIES COMMISSION		DATE	
ALL MATERIALS & CONSTRUCTION METHODS SHALL COMPLY WITH SHAKOPEE PUBLIC UTILITIES COMMISSION WATER POLICY MANUAL DATED AUGUST 04, 2014.			

LEGEND:

 EXISTING & FUTURE CONSTRUCTION

 **OVERSIZING 8" DIP to 12" DIP**

 **OVERSIZING 10" DIP to 12" DIP**



BENCH MARK
 MN DOT MONUMENT BLASCHKO
 AT TRUNK HIGHWAY 169 AND
 COUNTY ROAD 83
 ELEV.=774.78



2422 Enterprise Drive
 Mendota Heights, MN 55120
 (651) 681-1914
 Fax: 681-9488
 www.pioneereng.com

I hereby certify that this plan was prepared by me or under my direct supervision and that I am a duly Licensed Professional Engineer under the laws of the State of Minnesota.

Name: John M. Molinaro
 Reg. No.: 45831
 Date: 11-23-2021

Revisions:
 1. 02-22-22 - Phase Change
 2. 03-08-22 - Internal Comments
 3. 03-23-22 - City Comments
 4. 03-30-22 - SPU Comments
 5. 05-20-22 - City Comments
 6. 06-07-22 - Stormwater Comments
 7. 07-14-22 - Update SPU Details

Date: 11-23-2021
 Designed: JMM
 Drawn: JMM/PDS

OVERALL WATERMAIN

M/I HOMES
 5354 PARKDALE DR, #100
 ST. LOUIS PARK, MINNESOTA 55416

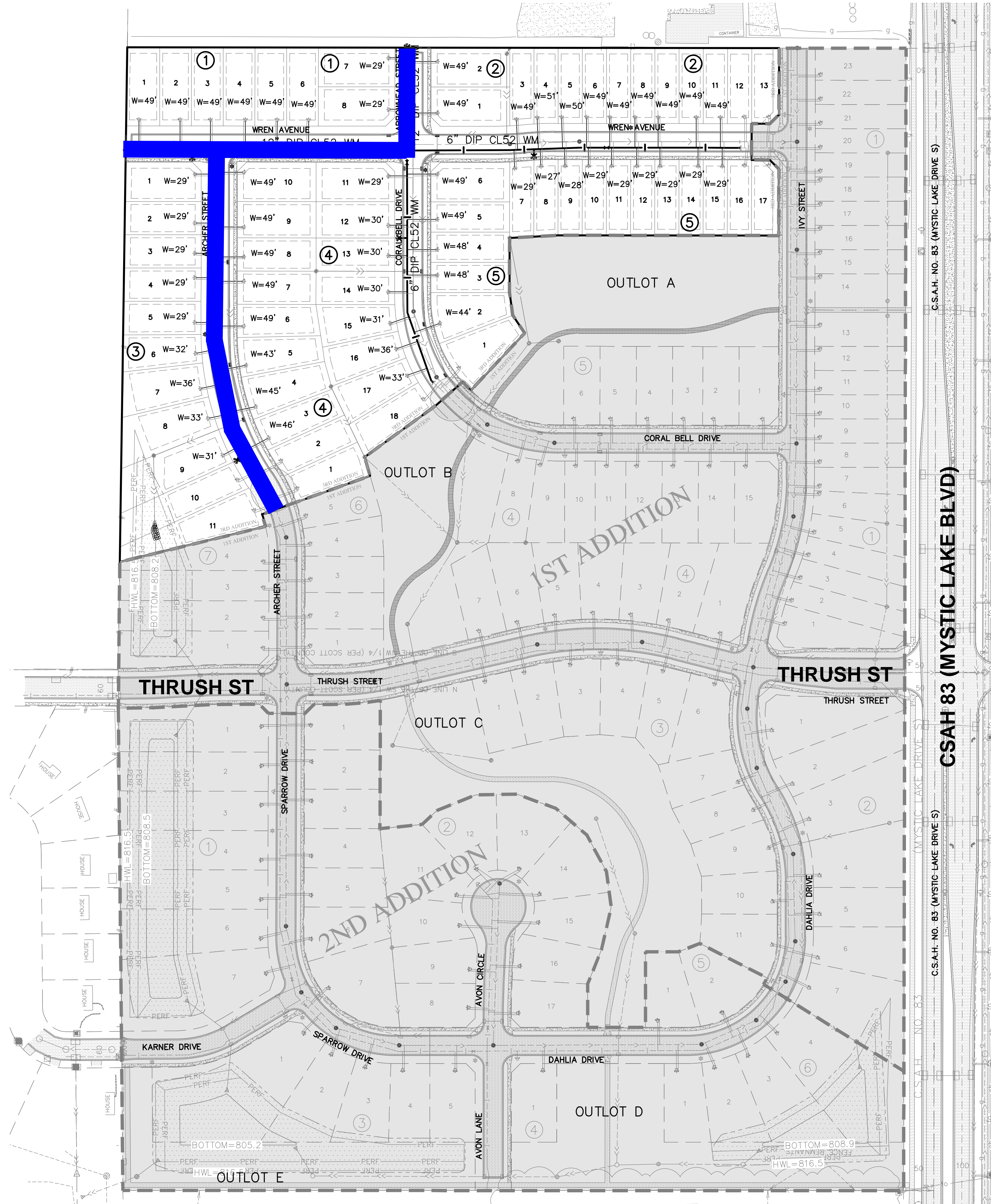
VALLEY CREST 2ND ADDITION
 SHAKOPEE, MINNESOTA

© 2019 Pioneer Engineering, P.A.

02-ENG-121089-SHEET-OVERALL-WATR

VALLEY CREST 3RD ADDITION

Resolution #2024-01



OVERSIZING 8" DIP to 12" DIP

SPUC APPROVAL	CITY APPROVAL	DATE	REVISION

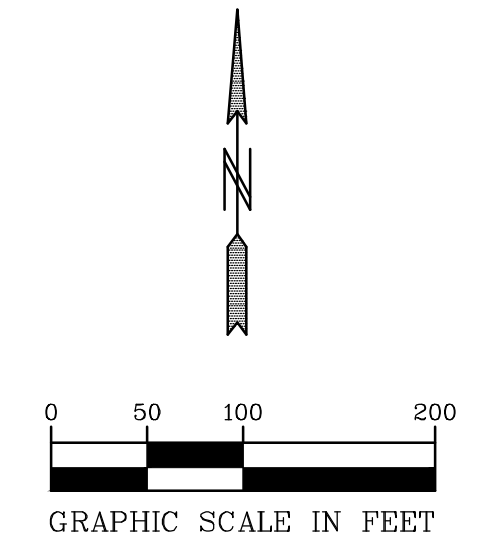
APPROVED FOR ONE YEAR FROM THIS DATE

SHAKOPEE PUBLIC UTILITIES COMMISSION _____ DATE _____

ALL MATERIALS & CONSTRUCTION METHODS SHALL COMPLY WITH SHAKOPEE PUBLIC UTILITIES COMMISSION WATER POLICY MANUAL DATED AUGUST 04, 2014.

LEGEND:

EXISTING CONSTRUCTION



BENCH MARK
 MN DOT MONUMENT BLASCHKO
 AT TRUNK HIGHWAY 169 AND
 COUNTY ROAD 83
 ELEV.=774.78



2422 Enterprise Drive
 Mendota Heights, MN 55120
 (651) 681-1914
 Fax: 681-9488
 www.pioneereng.com

I hereby certify that this plan was prepared by me or under my direct supervision and that I am a duly Licensed Professional Engineer under the laws of the State of Minnesota.

Name: John M. Molinaro
 Reg. No.: 45831
 Date: 12-16-2022

Revisions:
 1. 04-24-23 - City Comments
 2. 05-03-23 - Shop Drawings
 3. 05-30-23 - Hydrant Wren Ave.
 4. 06-12-23 - G.V. Archer Street

Date: 12-16-2022
 Designed: JMM
 Drawn: MBG

OVERALL WATERMAIN PLAN

M/I HOMES
 5354 PARKDALE DR, #100
 ST. LOUIS PARK, MINNESOTA 55416

VALLEY CREST 3RD ADDITION
 SHAKOPEE, MINNESOTA

RESOLUTION #2024-02

RESOLUTION APPROVING PAYMENT FOR THE PIPE OVERSIZING
COSTS ON THE WATERMAIN PROJECT:

WEST END LOWER BLUFF TRUNK WATER MAIN EXTENSION

WHEREAS, the Shakopee Public Utilities Commission had previously approved of an estimated amount of \$254,463.60 with Resolution #2022-12 for oversizing on the above described watermain projects, and

WHEREAS, the pipe sizes required for that project have been installed as shown on Attachment A of the engineering drawings by Bolton & Menk Inc., and

WHEREAS, a part, or all, of the project contains pipe sizes larger than would be required under the current Standard Watermain Design Criteria as adopted by the Shakopee Public Utilities Commission, and

WHEREAS, the policy of the Shakopee Public Utilities Commission calls for the payment of these costs to install oversize pipe above the standard size.

NOW THEREFORE, BE IT RESOLVED, that the payment by the Shakopee Public Utilities Commission for the oversizing on this project is approved in the amount of \$259,620.31, and

BE IT FURTHER RESOLVED, that all things necessary to carry out the terms and purpose of this Resolution are hereby authorized and performed.

Passed in regular session of the Shakopee Public Utilities Commission, this 8th day of January, 2024.

Commission President: Justin Krieg


ATTEST:


Commission Secretary: Greg Drent



H:\SHAKO\2125399\CAD\C3D\FIGR-125399_PLAN OVERVIEW.dwg 4/28/2022 2:49:49 PM

**SHAKOPEE PUBLIC UTILITIES
MEMORANDUM**

TO: Greg Drent, General Manager 

FROM: Joseph D. Adams, Planning & Engineering Director 

SUBJECT: Underground Electric Distribution System Policy

DATE: January 4, 2024

ISSUE

Staff requests the Commission consider modifying the fees collected under the subject policy due to an unresolvable conflict between the City of Shakopee's Joint Utility Trenching ordinance, MN State Statute requirements for competitive bidding and other utility companies' business practices.

BACKGROUND

Shakopee Public Utilities has had a long practice dating back to the 1970's to installing underground electric facilities to serve new developments within its service territory. Early on the Utilities Commission determined that while there was an additional cost to installing its electric facilities underground vs traditional overhead construction the benefits to the community i.e., improved safety and aesthetics warranted the added costs if existing customers did not subsidize new development.

So, the Commission at that time determined that new development would have to pay an upfront fee equal to the approximate added cost for the first cost to install underground vs overhead facilities. Utilities staff evaluated the cost difference and suggested a formula where the fees would equal 33% of the cost of the lateral underground material installed to serve each development whether residential or non-residential.

This formula worked well for a time, but eventually (late 1990's) all existing substation transformer and overhead feeder lines reached capacity and additional facilities began to be added and it was apparent that with most new feeder lines also being installed underground the formula needed to be adjusted. An engineering economics analysis was performed for the Commission by its planning consultant RW Beck that evaluated multiple work order projects

comparing costs for new underground feeders vs overhead feeders and for new lateral facilities to serve residential and non-residential development projects. The result was adjusting the underground electric charge fees to be equal to 75% of the lateral facilities cost for each development to account for the difference in both the feeder and lateral systems being installed underground vs overhead. It was also determined that the other costs for expanding the system such as adding substation capacity were sufficiently recovered by the increased sales due to growth.

At the same time to address cost certainty concerns in the residential development community a per lot/unit fee was derived that approximates the goal of recovering 75% of the lateral underground material costs in each development. These per lot/unit fees have annually been updated by the inflationary adjustment in the Engineering News Record Construction Cost Index.

SPU had been installing its electric lines in a joint trench with communication utilities, e.g., telephone and cable tv for several years after the City of Shakopee passed its original joint utility trench ordinance. Natural gas lines were not being required by the city engineer's office to be in the same trench as the wire utilities. This was common practice due to safety concerns and mutual interests by all parties.

More recently, due to concerns of ongoing right of way use conflicts during construction and preserving the available right of way and easement areas the city decided to extend the joint utility trenching requirements to combine the natural gas lines and wire utilities. Coordination meetings were held with all involved parties and an agreed upon joint trench arrangement with strict separation standards was adopted by the city.

The impasse that was created is due to the natural gas companies' refusal to allow SPU to take the lead and contract with qualified contractors to achieve total transparency on the cost sharing element of the joint trench construction. As they do in other communities the natural gas company (Reliant Energy or Xcel Energy depending on location) insists on choosing the joint trench contractor to honor their metro wide contracts with no exception for Shakopee's status as a separate municipal electric utility and SPU is billed for its "share" of the joint trench construction without competitive bidding and without being allowed to know what other occupants of the joint trench are contributing to the cost. This contrasts with our past practices of either contracting for joint trench services or doing the work ourselves with SPU equipment and labor and sharing all the cost data with the other parties and dividing the costs equally among all participants. Instead, we are told what to pay from a price list and that we do not have the right to know what any other party's costs have been.

Staff is uncomfortable with the present practices as we do not believe them to be consistent with the Commission's purchasing policy nor state statutes. We sought input from legal counsel who concurs. Staff's best remedy to the existing situation is to make it a requirement that the developer bear the cost of providing SPU with space in the joint trench. Then it will be possible

to comply with the city, state, and other utility companies' requirements without being left in an uncertain legal position. Doing this will result in added costs to the development community unless there is an adjustment in the developer's fees from SPU.

DISCUSSION

Staff has evaluated the past few years of residential developments after closing multiple work orders to determine average joint trenching costs on a per lot/unit basis. This analysis was across both natural gas companies service territories as they employ different contractors. It also included both single-family and multi-family developments.

Staff has also evaluated the economic effects of the Covid-19 pandemic influenced supply chain disruptions on material costs. Since SPU uses inventory costs for materials installed in each work order those effects have not yet been fully realized. This is due to the practice of inventory costs being constantly updated as a blend of existing remaining materials previously purchased and newer materials purchased at current pricing. Since its inception, we have been monitoring all residential work orders to compare the revenue derived by the per lot/unit fees vs the goal of equaling 75% of the lateral underground material costs. We have seen that the fees recently are falling short of the goal. As time goes on the supply chain issues should smooth out and with more projects constantly being completed material inventory costs will change. Staff will continue to monitor results when closing work orders and report back to the Commission from time to time as warranted.

RECOMMENDATIONS

1. Staff is recommending onetime **downward** adjustments equal to \$204 per single-family lot and \$54 per multi-family unit in the per lot/unit fees with both to be applied **prior** to the annual inflation percentage adjustment increase in fees to offset requiring the developers to reimburse the natural gas companies and their joint trench contractors for SPU's use of the joint trench.
2. Staff is recommending a onetime **upward** adjustment equal to \$33 per single-family lot and a onetime **downward** adjustment equal to \$20 per multi-family unit in the per lot/unit fees with both to be applied **prior** to the annual inflation percentage adjustment increase in fees.

REQUESTED ACTION

Staff requests the Commission approve the attached Resolution #2024-04 A Resolution Adjusting Fees Applied Under the Installation of Underground Electrical Distribution Systems Policy.

RESOLUTION #2024-04

RESOLUTION ADJUSTING FEES
APPLIED UNDER THE INSTALLATION OF UNDERGROUND
ELECTRICAL DISTRIBUTION SYSTEMS POLICY

WHEREAS, the fees established in Resolution #1115 are intended to be adjusted effective on the first day of January each year, and

WHEREAS, the underground electrical distribution charge fee was last adjusted on December 5, 2022, effective January 1, 2023, and

WHEREAS, the “Construction Cost Index” as listed in the Engineering News Record was 13,174.92, as of October, 2022, and

WHEREAS, this index was 13,514.76 as of December, 2023, and

WHEREAS, the Utilities Commission has determined a one-time downward adjustment in the fees equal to \$204.00 per single-family lot and \$54.00 per multi-family unit is appropriate to offset requiring developers to bear the associated joint trenching costs for underground electric facilities, and

WHEREAS, the Utilities Commission has determined a one-time upward adjustment in the fees equal to \$33.00 per single-family lot and a one-time downward adjustment equal to \$20.00 per multi-family unit is appropriate to recover the extraordinary COVID-19 pandemic influenced increase in material costs.

NOW THEREFORE, BE IT RESOLVED, that the underground electrical distribution charge fees be increased to \$608.00 per lot for single-family and twin home developments and \$373.00 per living unit for other than twin home multi-family unit developments except apartment buildings and that the fees shall remain to be 75% of the cost of material for all other developments including apartment buildings, effective January 1, 2024.

BE IT FURTHER RESOLVED, that all things necessary to carry out the terms and purpose of this resolution are hereby authorized and performed.

Passed in regular session of the Shakopee Public Utilities Commission, this 8th day of January, 2024.

Commission President: Justin Krieg

ATTEST:

Commission Secretary: Greg Drent



PO Box 470 • 255 Sarazin Street
Shakopee, Minnesota 55379
Main 952.445-1988 • Fax 952.445-7767
www.shakopeeutilities.com

TO: Greg Drent, General Manager *gld*
FROM: Ryan Halverson, Water Engineering Supervisor *RH*
SUBJECT: City Project No. SEWER-24-001
West End Lower Bluff Trunk Water Main Extension
DATE: January 3, 2024

ISSUE

Staff is seeking Commission action related to establishing an Equivalent Lateral Watermain Fee, to be paid by the benefitting properties, for the watermain extension portion of the subject project.

BACKGROUND

The Shakopee Public Utilities Commission previously approved the West End Lower Bluff Trunk Water Main Extension project. The construction project was a cooperative between the City of Shakopee and SPU to extend municipal utilities west from Windermere Addition south of Highway 169 to serve newly annexed and developing areas on the west end of Shakopee. The project included construction of a sanitary sewer forcemain and lift station for the City of Shakopee, and construction of a 12" municipal trunk watermain for SPU.

Attached is *Resolution #2022-11, a Resolution Approving a Water Main Construction Project and Determining its Lateral Water Main Equivalency Described as: West End Lower Bluff Trunk Water Main Extension.*

Construction of the watermain portion of the subject project has been completed and final project costs have been determined.

DISCUSSION

See Attachment A, which includes a map of the project area, the watermain improvements and adjacent properties.

Final actual construction costs for the watermain were \$803,039.50, and an additional \$122,756.38 in engineering and contract administration costs for a total final project cost of \$925,795.88. All internal SPU costs related to plan review and inspection have been included in the total project cost. The 2022 Capital Projects budget for this project was \$1,700,000.



PO Box 470 • 255 Sarazin Street
Shakopee, Minnesota 55379
Main 952.445-1988 • Fax 952.445-7767
www.shakopeeutilities.com

Attachment B to this memo shows a detailed breakdown of the final project costs, engineering and administrative costs and the funding sources for the project.

The Equivalent Lateral Water Main cost is proposed to be split over the two parcels being crossed by the water main. No parallel water main is expected on the City parcel, so its entire acreage was included, while the Breeggemann parcel future development will undoubtedly include additional water mains for service and fire protection. City zoning for the parcel requires an 8-inch water main and the coverage area of an 8-inch water main in the SPU water policy design criteria is to a dimension 800 feet parallel to the water main. The parcels are located within the 1st High Elevation Service District and the boundary of that district is the Highway 169 right of way, staff included 800 feet (N-S) of area on the Breeggemann parcel south of the Highway 169 right of way for the east west portion of the water main and 800 (W-E) east of the County Road 69 (Old Brickyard Rd) right of way for the north south portion of the water main.

As proposed, the total area that the lateral water main equivalent connection charge would be applied against is 72.01 acres with the split being 48.41 acres and 23.60 acres for the Breeggemann and City parcels respectively. The Equivalent Lateral Water Main Connection cost based on the actual final project costs was \$666,175.57 and the fee is proposed at \$9,251.15 per acre.

Attachment C to this memo includes a map of the project area and the Equivalent Lateral Water Main acreage for both properties benefitting from the project. The Equivalent Lateral Water Main charge will be collected when the adjacent properties develop or connect to the municipal water system.

Attached is Resolution #815 A Resolution Authorizing and Establishing a Fee for the Equivalent Lateral Water Main Portion of a Trunk Water Main Project.

Based on the policy resolution, staff has prepared Resolution #2024-03 A Resolution Determining its Equivalent Lateral Water Main Equivalency Described as: West End Lower Bluff Trunk Water Main Extension

Attached is Resolution #2023-19 A Resolution Modifying the Interest Provisions of Resolution 2023-02 Establishing a Connection Charge for the Equivalent Lateral Watermain Portion of a Trunk Water main Project.

The West End Lower Bluff Trunk Water Main Extension Equivalent Lateral Watermain Fee will be listed in the SPU Fee Schedule and adjusted annually for inflation.

REQUESTED ACTION

Staff requests the Commission adopt Resolution #2024-03 as presented.

RESOLUTION #2022-11

A RESOLUTION APPROVING A WATER MAIN CONSTRUCTION PROJECT, AND
DETERMINING ITS LATERAL WATER MAIN EQUIVALENCY,
DESCRIBED AS:

WEST END LOWER BLUFF TRUNK WATER MAIN EXTENSION

WHEREAS, the Shakopee City Council and the Shakopee Public Utilities Commission have agreed to construct certain public improvements in the Highway 169 and Country Road 69 right of way, and

WHEREAS, the Shakopee Public Utilities Commission desires to install a 12-inch water main concurrent with the city improvements to further coordination of all of the improvements and to avoid the inevitable complications that would result from installing the water main at a future date, and

WHEREAS, there are cost savings to have the water main construction be a part of the improvements, and

WHEREAS, the Shakopee Public Utilities Commission has previously adopted policies to ensure the eventual recovery of lateral water main equivalent costs of trunk water mains and the funding of trunk water main over sizing costs, and

WHEREAS, the estimated cost of the 12-inch water main construction is \$905,364.39, and

WHEREAS, the estimated cost of a lateral water main equivalent to an 8-inch water main, the minimum size required to serve the east to west and north to south flow requirement of the adjoining properties per the Shakopee Public Utilities Commission's adopted water main design criteria, is \$650,600.79, and

WHEREAS, the area of the land being traversed by the extension of the 12-inch water main, which is identified on Attachment A to this resolution, and that is determined to be receiving the benefit of the lateral water main equivalent is 72.01 acres, and

WHEREAS, the estimated cost of the trunk water main over sizing from the 8-inch lateral water main to the 12-inch trunk water main is \$254,763.60.

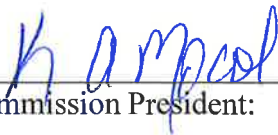
NOW THEREFORE, BE IT RESOLVED, that the West End Lower Bluff Trunk Water Mian Extension project is hereby approved.

BE IT FURTHER RESOLVED, that the lateral water main equivalent cost shall be recovered under the provisions of Resolution #815 with the fee described charged to the properties fronting the 12-inch water main extension when those properties request water service and meet all other standard requirements to receive water service, and the fee estimated to be \$9,034.87 per acre shall be set after project completion when final costs are known.

BE IT FURTHER RESOLVED, that the trunk water main over sizing cost shall be funded per the trunk water policy.

BE IT FURTHER RESOLVED, that all things necessary to carry out the terms and purpose of this Resolution are hereby authorized and performed.

Passed in regular session of the Shakopee Public Utilities Commission, this 2nd day of May, 2022.



Commission President: Kathi Mocol

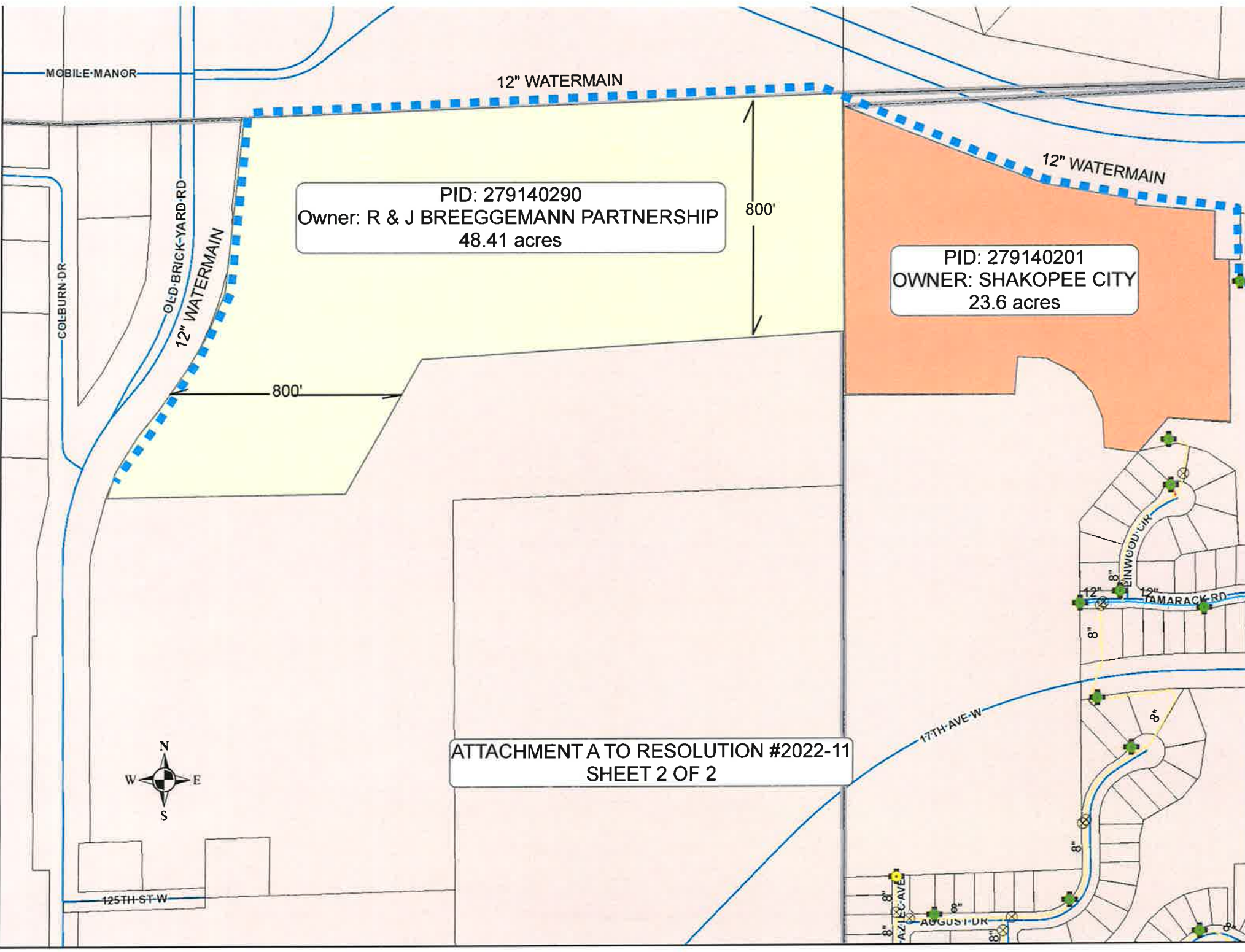
ATTEST:


Commission Secretary: Greg Drent

**Attachment A to Resolution #2022-11
Sheet 1 of 2**

**Preliminary Lateral Water Main Equivalent Charge for West End Lower Bluff Water Main
Extension**

P.I.D	Owner	Acreage	Proposed Lateral Water Main Charges
279140201	City of Shakopee	23.60	\$213,222.87
279140290	R & J Breeggemann Partnership	48.41	\$437,377.92
	Total Acres	72.01	\$650,600.79
	\$650,600.79 Total Later Water Main		
	\$9,034.87 per acre		



PID: 279140290
Owner: R & J BREEGGEMANN PARTNERSHIP
48.41 acres

PID: 279140201
OWNER: SHAKOPEE CITY
23.6 acres

ATTACHMENT A TO RESOLUTION #2022-11
SHEET 2 OF 2



MOBILE-MANOR

12" WATERMAIN

12" WATERMAIN

OLD-BRICK-YARD RD
12" WATERMAIN

COLBURN DR

800'

800'

125TH ST-W

17TH AVE-W

ELMWOOD DR

TAMARACK RD

AZILEC AVE

AUGUST DR

12"

8"

8"

8"

8"

8"

8"

8"

8"

8"

8"

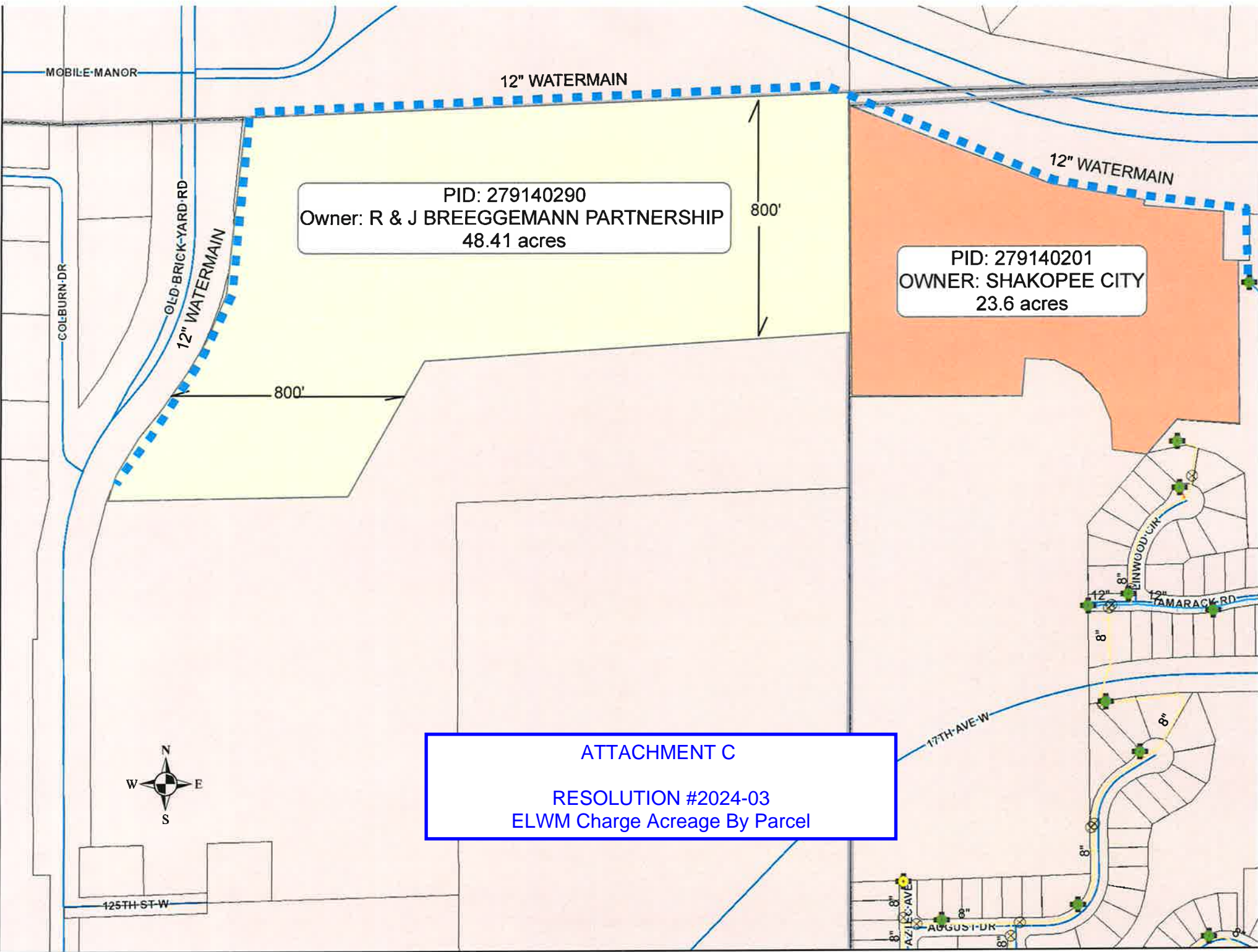


H:\SHAKO\2125399\CAD\C3D\FIGR-125399_PLAN OVERVIEW.dwg 4/28/2022 2:49:49 PM

WEST END LOWER BLUFF TRUNK WATERMAIN EXTENSION

SHAKOPEE PUBLIC UTILITIES COMMISSION
 FUNDING SOURCE COST SPLIT WORKSHEET
 DATE: 1/3/2024

ITEM NO.	MN/DOT SPEC NO.	ITEM DESCRIPTION	UNIT	TOTAL QUANTITY	UNIT COST	TOTAL COST	SHAKOPEE PUBLIC UTILITIES			
							WATERMAIN OVERSIZING		EQUIVALENT LATERAL WATERMAIN	
							QUANTITY	AMOUNT	QUANTITY	AMOUNT
1	2021.501	MOBILIZATION	LUMP SUM	1	\$32,000.00	\$32,000.00			1	\$32,000.00
2	2104.502	REMOVE MANHOLE (SAN)	EACH		\$850.00					
3	2104.502	SALVAGE HYDRANT & VALVE	EACH	1	\$615.00	\$615.00	1	\$615.00		
4	2104.503	REMOVE SEWER PIPE (SANITARY)	LIN FT		\$50.00					
5	2104.518	REMOVE BITUMINOUS WALK	SQ FT		\$10.00					
6	2106.507	EXCAVATION - COMMON (P)	CU YD		\$25.00					
7	2211.509	AGGREGATE BASE CLASS 5	TON	792	\$32.00	\$25,344.00			792	\$25,344.00
8	2360.509	TYPE SP 9.5 WEARING COURSE MIX (2,C)	TON		\$305.00					
9	2360.604	TYPE SP 9.5 WEARING COURSE MIX (2,C) 1.5" THICK (2 LIFTS)	SQ YD		\$80.00					
10	2451.607	ROCK EXCAVATION IN TRENCH	CU YD	19	\$125.00	\$2,375.00			19	\$2,375.00
11	2503.602	CONNECT TO EXISTING SANITARY SEWER	EACH		\$40,000.00					
12	2503.603	12" FORCEMAIN HDPE PIPE SEWER	LIN FT		\$95.00					
13	2503.603	21" PVC PS115 PIPE SEWER	LIN FT		\$300.00					
14	2503.603	21" PVC PS115 PIPE SEWER JACK & BORE (W/ STEEL CASING)	LIN FT		\$1,260.00					
15	2503.603	12" WATERMAIN DUCTILE IRON CL 52 JACK & BORE (W/ STEEL CASING)	LIN FT	130	\$900.00	\$117,000.00	130	\$117,000.00		
16	2504.602	CONNECT TO EXISTING WATERMAIN	EACH	1	\$18,000.00	\$18,000.00			1	\$18,000.00
17	2504.602	INSTALL HYDRANT AND VALVE	EACH	1	\$1,500.00	\$1,500.00			1	\$1,500.00
18	2504.602	6" GATE VALVE & BOX	EACH	5	\$2,500.00	\$12,500.00	5	\$12,500.00		
	2504.602	8" GATE VALVE AND BOX	EACH	9	\$4,750.00	\$42,750.00			9	\$42,750.00
19	2504.602	12" GATE VALVE & BOX (OVERSIZED)	EACH	9	\$350.00	\$3,150.00	9	\$3,150.00		
20		HYDRANT	EACH	4	\$6,000.00	\$24,000.00	4	\$24,000.00		
21	2504.603	6" WATERMAIN DUCTILE IRON CL 52	LIN FT	27	\$65.00	\$1,755.00	27	\$1,755.00		
22	2504.603	12" WATERMAIN DUCTILE IRON CL 52	LIN FT	4,921	\$11.00	\$54,131.00	4,921	\$54,131.00		
	2505.603	12" WATERMAIN DUCTILE IRON CL 53	LIN FT		\$91.00					
	2504.603	8" WATERMAIN DUCTILE IRON CL 52	LIN FT	4,921	\$80.00	\$393,680.00			4,921	\$393,680.00
23	2504.603	12" WATERMAIN DUCTILE IRON CL 52 (ZINC COATED)	LIN FT		\$60.00					
	2504.603	8" WATERMAIN DUCTILE IRON CL 52	LIN FT		\$80.00					
24	2504.608	DUCTILE IRON FITTINGS (SANITARY)	POUND		\$25.00					
25	2504.608	DUCTILE IRON FITTINGS (WATERMAIN)	POUND	829	\$18.00	\$14,919.18			829	\$14,919.18
		DUCTILE IRON FITTINGS (WATERMAIN) (OVERSIZED)	POUND	669	\$18.00	\$12,044.82	669	\$12,044.82		
26	2506.601	LIFT STATION	LUMP SUM		\$475,000.00					
27	2506.601	LIFT STATION CONTROLS	LUMP SUM		\$160,000.00					
28	2506.602	CONSTRUCT 96" DIA AIR RELEASE MANHOLE	EACH		\$80,000.00					
29	2506.602	CONSTRUCT 96" DIA MAINTAINENCE MANHOLE	EACH		\$85,000.00					
30	2506.603	CONSTRUCT 48" DIA SAN MANHOLE	LIN FT		\$550.00					
31	2506.603	CONSTRUCT 84" DIA SAN MANHOLE	LIN FT		\$1,900.00					
32	2521.518	6" CONCRETE WALK	SQ FT		\$21.00					
33	2563.601	TRAFFIC CONTROL	LUMP SUM	1	\$4,800.00	\$4,800.00			1	\$4,800.00
34	2564.602	STRUCTURE MARKER SIGN	EACH		\$125.00					
35	2571.524	DECIDUOUS TREE 1.5" CAL B&B	TREE	19	\$725.00	\$13,775.00			19	\$13,775.00
36	2573.501	STABILIZED CONSTRUCTION EXIT	LUMP SUM	1	\$1,900.00	\$950.00			1	\$950.00
37	2573.502	STORM DRAIN INLET PROTECTION	EACH		\$355.00					
38	2573.503	SILT FENCE, TYPE MS	LIN FT	3,730	\$1.80	\$6,714.00			3,730	\$6,714.00
39	2573.503	SEDIMENT CONTROL LOG TYPE WOOD FIBER	LIN FT	150	\$4.00	\$600.00			150	\$600.00
40	2574.507	COMMON TOPSOIL BORROW (LV)	CU YD		\$36.00					
41	2574.508	FERTILIZER TYPE 3	POUND	349	\$1.00	\$349.00			349	\$349.00
42	2575.504	ROLLED EROSION PREVENTION PRODUCT CAT 20	SQ YD	5,529	\$1.50	\$8,293.50			5,529	\$8,293.50
43	2575.505	SEEDING	ACRE	2	\$160.00	\$280.00			2	\$280.00
44	2575.508	SEED MIXTURE 25-141	POUND	104	\$7.00	\$724.50			104	\$724.50
45	2575.508	HYDRAULIC BONDED FIBER MATRIX	POUND	7,193	\$1.50	\$10,789.50			7,193	\$10,789.50
46	2575.523	WATER	MGAL		\$45.00					
TOTAL FINAL CONSTRUCTION COST (city invoice for construction costs):						\$803,039.50		\$225,195.82		\$577,843.68
CITY BILLED COSTS (50% SURVEY & GEO. CONSTRUCTION ADMIN @ 3% WATERMAIN COST)						\$39,154.44		\$10,980.05		\$28,174.39
BOLTON MENK COSTS (DESIGN, CONSTRUCTION ADMIN)						\$81,133.50		\$22,752.21		\$58,381.29
SPU INTERNAL COSTS (LABOR)						\$2,468.44		\$692.22		\$1,776.22
TOTAL FINAL PROJECT COST:						\$925,795.88		\$259,620.31		\$666,175.57



MOBILE-MANOR

12" WATERMAIN

12" WATERMAIN

PID: 279140290
Owner: R & J BREEGGEMANN PARTNERSHIP
48.41 acres

PID: 279140201
OWNER: SHAKOPEE CITY
23.6 acres

OLD-BRICK-YARD RD
12" WATERMAIN

COLBURN DR

800'

800'

ATTACHMENT C
RESOLUTION #2024-03
ELWM Charge Acreage By Parcel



125TH ST-W

17TH AVE-W

AZTEC AVE

AUGUST DR

ELMWOOD CIR

TAMARACK RD

RESOLUTION #815

A RESOLUTION AUTHORIZING AND ESTABLISHING A FEE
FOR THE EQUIVALENT LATERAL WATER MAIN PORTION
OF A TRUNK WATER MAIN PROJECT

WHEREAS, Minn. Stat. Chapter 444 gives the Shakopee Public Utilities Commission discretion in determining and calculating appropriate charges and fees to be collected for providing water service to its customers;

WHEREAS, Minn. Stat. § 444.075, subd. 3 states that fees and charges may be imposed to pay for the construction, reconstruction, repair, enlargement, maintenance, operation, and use of water service facilities; and

WHEREAS, Minn. Stat. § 444.075, subd. 3 states that charges imposed for providing water service must be just and equitable and must relate to the use of and the availability of water service facilities and for connections with them; and

WHEREAS, the Shakopee Public Utilities Commission has established a trunk water policy establishing a trunk water main area assessment charge for the construction of municipal trunk water mains that are (over)sized in excess of the lateral water mains required to serve nearby property; and

WHEREAS, the Shakopee Public Utilities Commission has established a lateral water main design criteria policy establishing requirements for minimum size and number of lateral water mains required to serve nearby property based on zoning, flow requirements and size of the area being served; and

WHEREAS, the cost of installing and constructing lateral water mains are oftentimes paid by developers or other parties requesting such service or through the Chapter 429 special assessment process; and

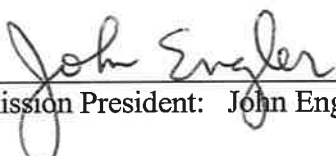
WHEREAS, the Shakopee Public Utilities Commission has concluded that in certain cases, the process established in Minn. Stat. Chapter 444 should be utilized to pay for the equivalent lateral water main construction costs associated with specific water main installations; and

WHEREAS, the Shakopee Public Utilities Commission desires to establish a policy to ensure that the fees for providing such lateral water main are just and equitable.

NOW, THEREFORE, BE IT RESOLVED by the Shakopee Public Utilities Commission as follows:

1. Pursuant to Minn. Stat. Chapter 444, there is hereby established a fee for the equivalent lateral water main portion of a trunk water main project.
2. The fee authorized by this Resolution shall be applicable in situations where the equivalent lateral water main portion of the trunk water main costs is not being paid by a developer or other person requesting the construction and installation of lateral water main for the purpose of receiving water service or in situations where the Commission concludes that collecting the costs through the Chapter 429 special assessment procedure project should not be utilized.
3. The lateral water main fee established by this Resolution shall be calculated at the time that the Commission approves the water main project based on the actual costs for constructing the water main, with consideration of the equivalent lateral water main portion of any oversized trunk water main. The fee shall be indexed on an annual basis and be calculated on an area basis based on the amount of property that will ultimately be served by the lateral water main. The fee shall be paid at the time of connection to the water system, and is in addition to any and all other applicable standard requirements to receive water service.

Passed in regular session of the Shakopee Public Utilities Commission, this 1st day of August, 2005.


Commission President: John Engler

ATTEST:

Commission Secretary: Kent Archerd

RESOLUTION #2023-19

A RESOLUTION MODIFYING THE INTEREST PROVISIONS OF
RESOLUTION 2023-02 ESTABLISHING A CONNECTION CHARGE FOR THE
EQUIVALENT LATERAL WATER MAIN PORTION OF
A TRUNK WATER MAIN PROJECT

WHEREAS, on the 3rd of January 2023, the Shakopee Public Utilities Commission adopted Resolution #2023-02, which clarified the provisions of Resolution #815, which was adopted on the 1st of August 2005, and which established a policy to ensure that the charges for providing lateral water main installations are just and equitable.

WHEREAS, Resolution 2023-02 established a connection charge for the equivalent lateral water main portion of a trunk water main project (the "Charge") under Minnesota Statutes, Chapter 444. Resolution 2023-02 also specified that the Charge shall be indexed using the US Department of Treasury Daily Long-Term Rate – LT COMPOSITE (>10yrs.).

WHEREAS, the Shakopee Public Utilities Commission, after hearing from property owners affected by the Charge and carefully considering their input and balancing the interests of all past, present, and future water customers, has determined to change the index applied to the Charge.

NOW, THEREFORE, BE IT RESOLVED by the Shakopee Public Utilities Commission as follows:

1. The Charge established under Resolution 2023-02 shall be indexed on an annual basis using the Construction Cost Index published by the Engineering News Record. Interest shall commence on August 1, 2023, except as may be expressly determined otherwise by Commission action.
2. The Charge, including any applicable interest, shall be set forth on the SPU Fee Schedule, as amended from time to time, posted on the SPU website.

Passed in regular session of the Shakopee Public Utilities Commission, this 7th day of August, 2023.


 Commission President: Justin Krieg

ATTEST:

 Commission Secretary: Greg Drent

RESOLUTION #2024-03

A RESOLUTION APPROVING A WATER MAIN CONSTRUCTION PROJECT, AND
DETERMINING THE LATERAL WATER MAIN EQUIVALENCY,
DESCRIBED AS:

WEST END LOWER BLUFF TRUNK WATER MAIN EXTENSION

WHEREAS, the Shakopee City Council and the Shakopee Public Utilities Commission have previously agreed to construct certain public improvements in the Highway 169 and Country Road 69 right of way, and

WHEREAS, the Shakopee Public Utilities Commission has installed a 12-inch water main concurrent with the other improvements to further coordination of all of the improvements and to avoid the inevitable complications that would result from installing the water main at a future date, and

WHEREAS, there are cost savings to have the water main construction be a part of the improvements, and

WHEREAS, the Shakopee Public Utilities Commission has previously adopted policies to ensure the eventual recovery of lateral water main equivalent costs of trunk water mains and the funding of trunk water main over sizing costs, and

WHEREAS, the final cost of the 12-inch water main construction is \$925,795.88, and

WHEREAS, the final cost of a lateral water main equivalent to an 8-inch water main, the minimum size required to serve the east to west and north to south flow requirement of the adjoining properties per the Shakopee Public Utilities Commission's adopted water main design criteria, is \$666,175.57, and

WHEREAS, the area of the land being traversed by the extension of the 12-inch water main, which is identified on Attachment A to this resolution, and that is determined to be receiving the benefit of the lateral water main equivalent is 72.01 acres, and

WHEREAS, the estimated cost of the trunk water main over sizing from the 8-inch lateral water main to the 12-inch trunk water main is \$259,620.31.

NOW THEREFORE, BE IT RESOLVED, that the West End Lower Bluff Trunk Water Main Extension project improvements have been completed and are hereby accepted.

BE IT FURTHER RESOLVED, that the lateral water main equivalent cost shall be recovered under the provisions of SPU Resolution #815 and Resolution #2023-19 with the fee described charged to the properties fronting the 12-inch water main extension when those properties request water service and meet all other standard requirements to receive water service, and the fee of \$9,251.15 per acre shall be collected.

BE IT FURTHER RESOLVED, that all things necessary to carry out the terms and purpose of this Resolution are hereby authorized and performed.

Passed in regular session of the Shakopee Public Utilities Commission, this 8th day of January, 2024.

Commission President: Justin Krieg

ATTEST:

Commission Secretary: Greg Drent

RESOLUTION #2024-05

RESOLUTION ADOPTING FEES AND CHARGES FOR 2024

WHEREAS, it is desirable to have a general listing of various fees and charges applied by the Shakopee Utilities, and

WHEREAS, the Utilities Commission has adopted various electric and water rates and charges by resolutions separate from this one and wish to keep those rates and charges intact,

NOW THEREFORE, BE IT RESOLVED THAT THE SHAKOPEE PUBLIC UTILITIES COMMISSION, hereby adopts the attached listing of fees, charges, and rates, for the purpose of having a common reference, effective January 1, 2024.

BE IT FURTHER RESOLVED, that this resolution does not invalidate any fees or charges adopted by other resolutions, nor does it preclude the subsequent adoption or application of any fees or charges that may arise for circumstances not covered by the attached list.

BE IT FURTHER RESOLVED, that all things necessary to carry out the terms and purpose of this Resolution are hereby authorized and performed.

Adopted in regular session of the Shakopee Public Utilities Commission, this 8th day of January, 2024.

Commission President: Justin Krieg

ATTEST:

Commission Secretary: Greg Drent

2024 FEES SCHEDULE

CUSTOMER ACCOUNT & COLLECTION FEES

ACCOUNT SETUP	\$15.00
ACCOUNT SETUP – TEMP SERVICE	\$50.00 + tax
RENTERS DEPOSIT	
Electric Heat	\$200.00
Gas Heat	\$100.00
COMMERCIAL ACCOUNT DEPOSIT	1 months typical bill
NSF CHARGE	\$30.00
STOP PAYMENT CHARGE	\$33.00
LATE PAYMENT CHARGE	5% of new charges
ELECTRIC RECONNECTION	\$100.00
METER TAMPERING/THEFT	\$100.00 (plus actual costs)

ELECTRIC SERVICE FEES

ELECTRIC RATES	Electric Rates Schedule
SPECIAL SERVICE CHARGE	
Line Switching	\$70.00/man hr + equipment charge
Misc. Work	\$70.00/man hr + equipment charge
After Hours	Overtime rates will apply
SECURITY LIGHT CHARGE	
100W HPS	\$10.05/month
100W HPS Customer Metered	\$5.65/month
250W HPS	\$18.60/month
250W HPS Customer Metered	\$8.05/month
400W HPS	\$27.90/month
400W HPS Customer Metered	\$10.80/month
1000W Metal Halide	\$62.65/month
SMALL (100W HPS EQUIV) LED	\$5.15/month
SMALL (100W HPS EQUIV) LED Customer Metered ..	\$3.65/month
MEDIUM (250W HPS EQUIV) LED	\$10.55/month
MEDIUM (250W HPS EQUIV) LED Customer Metered ..	\$5.65/month
LARGE (1000W MH EQUIV) LED	\$24.50/month
LARGE (1000W MH EQUIV) LED Customer Metered ...	\$9.80/month
PL/SMSC Residential LED	\$3.65/month
PL/SMSC Collector LED	\$8.05/month
PL/SMSC Residential HPS	\$9.55/month
PL/SMSC Collector HPS	\$18.10/month

NET METER FEE

Residential.....	\$85.00
Commercial 1 Phase.....	\$85.00
Commercial 3 Phase.....	\$85.00

STREETLIGHT INSTALLATION CHARGE *

Residential LED Standard – 24’ Aluminum Pole	\$1,945.64/each
Residential LED – Prior Lake** – 18’ Aluminum Pole	\$1,725.00/each
Collector LED – Breakaway – 30’ Aluminum Pole Group Control	\$6,671.70/each
Collector LED – Breakaway – 30’ Aluminum Pole Single Installation	\$6,244.96/each
Round-A-Bout LED – 27’ Aluminum Pole	\$6,864.14/each

* For typical multiple units installed as a part of a new underground electric distribution system extension and includes 3 years of operation and maintenance cost.

** Does not include 3 year energy or maintenance since Prior Lake is billed monthly.

SEASONAL DEMAND CUSTOMER CHARGE

To arrive at charges to disconnect service to avoid monthly minimum demand charges:

1. Take the number of months service is to be disconnected.
2. Take the regular billing demand that would apply (which would be 60% of the highest billing demand during the preceding 11 months, or 15KW, whichever is greater).
3. Multiply number of months service will be disconnected times that regular billing demand, and that product times the regular demand charge. This amount will be divided in half, with the Shakopee Public Utilities Commission absorbing one said half.
4. The remaining said half to be paid by the customer, split equally between disconnecting order of service and reconnecting order of service, and due and payable at time of those respective events.

PROPERTY DEVELOPMENT FEES

PLAN REVIEW AND INSPECTION FEE.....	100% of actual costs. Deposit amount equal to 8.5% of estimated construction cost.
TRUNK WATER CHARGE.....	\$5,359.00 net per acre
WATER CAPACITY CHARGE.....	\$5,693.00 per equivalent SAC unit, + 13.4 cents per sq. ft. for industrial use on
UNDERGROUND CHARGE	
Single-family & twin home developments.....	\$608.00 per lot
Non-twin home multi-family developments... (except apartment buildings)	\$373.00 per living unit
All other developments.....	75% of the cost of material (including apartment buildings)

DISTRIBUTED GENERATION INTERCONNECTION APPLICATION FEES

SIMPLIFIED.....	\$100.00
FAST TRACK – CERTIFIED SYSTEM.....	\$100.00 plus \$1.00/KW
FAST TRACK – NON-CERTIFIED SYSTEM.....	\$100.00 plus \$2.00/KW
STUDY.....	\$1,000.00 plus \$2.00/KW Down payment. Additional fees may apply.

SUMMARY OF FEES, CHARGES AND RATES	
EQUIPMENT RATES	
Effective January 1, 2024	
EQUIPMENT & NUMBER	\$/HR
Digger Derrick #612	\$100.00
Bucket Truck #610, 611, 614, 616	\$65.00
1 Ton Truck #613, 631, 632, 633, 636	\$30.00
Pick-Up Truck #617, 618, 621, 627, 642, 645, 646	\$30.00
Tractor / Backhoe #638	\$60.00
Trencher #623	\$50.00
Skid Steer #624, #648	\$50.00
Hydra Vacuum #639, #656	\$30.00
Air Compressor #628	\$15.00
Brush Chipper #625, #657	\$20.00

Rate does not include \$70/HR man hour to operate equipment

2024 FEES SCHEDULE

WATER

WATER RATES.....	Water Rates Schedule
BULK WATER FILL STATION	
1 – 1000 Gallons.....	\$5.00
1001+ Gallons.....	\$10.00
HYDRANT USE	
Annual Permit Fee (Valid until November 15 th of year issued)	\$100.00
Equipment Deposit.....	\$500.00 ¾" / \$1500.00 for 2 ½"
Meter Rental.....	\$3 a day (Including Weekends & Holidays)
Water Charge.....	\$3.72 per 1000 gallons Same Rate as unsewered production water rate
CONNECTION PERMIT FEE/INSPECTION FEE	\$150.00 (Includes Permit & 1 hr. Inspection) Add'l Hours of Inspection @\$100/hr.
PRESSURE VACUUM BREAKER TESTING	\$105.00
SHUTOFF FEE/COLD WEATHER.....	\$75.00 or \$125.00 after hours
REINSTATEMENT FEE.....	\$75.00 or \$125.00 after hours
WATER METER FEE	See below
SPECIAL SERVICE CHARGE	
Flushing.....	\$70.00/man hr + truck rate
Water Main Inspection.....	\$70.00/man hr + truck rate
Operate Valves.....	\$70.00/man hr + truck rate
After Hours.....	Overtime rates will apply
IRRIGATION VALVE FEE.....	\$50.00/valve
PRIVATE HYDRANT INSPECTION.....	\$105.00 each
STANDBY FIRE PROTECTION CHARGE.....	\$20.00/year

TEMPORARY NEW CONSTRUCTION WATER METER RENTAL

PERMIT FEES	\$100.00
EQUIPMENT DEPOSIT	\$500.00 ¾"
METER RENTAL	\$3.00 per day (Including Weekends & Holidays)
WATER CHARGE	\$3.72 per 1000 gallons Same Rate as unsewered production water rate

WATER METERS AND INSTALLATION FEES

Standard Meters

Meter Size	Type	Cost Includes Fittings & Wiring to outside recorder
¾"	iPERL	\$470.00
1"	iPERL	\$665.00
1"	Fire Rated	\$665.00
1.5"	T2	\$1,490.00
	C2	\$2,020.00
2"	T2	\$1,715.00
	C2	\$2,265.00
3"	T2	\$1,955.00
	C2	\$2,705.00
4"	T2	\$3,670.00
	C2	\$4,615.00
6"	T2	\$5,820.00
	C2	\$7,420.00

Specialty Meters

8" Fire	F2	Call for Price
10" Fire	F2	Call for Price
Fire Detector Meter		\$230.00

Requests for a 1" and larger meter and special meters require SPU approval

SUMMARY OF FEES, CHARGES AND RATES

EQUIPMENT RATES

Effective January 1, 2024

EQUIPMENT & NUMBER	\$/HR
1 Ton Truck #630, 650	\$30.00
Pick-Up Truck #615, 619, 622, 626, 634, 649, 651, 652	\$30.00
Hydrant Maintenance Truck - #635	\$50.00
Valve Maintenance Trailer #647	\$50.00

Rate does not include \$70/HR man hour to operate equipment

EQUIVALENT LATERAL WATER MAIN CHARGE**County Road 79 Water Main****\$2,594.66/acre**

This charge applies to all properties and developments abutting and connecting to the water main along the east side of County Road 79 from Westchester Estates to Hillwood Drive.

The charge is to be collected at the time of connection to the public water main.

(SPU Resolution #816)

Jennifer Lane Water Main**\$8,874.23/acre**

This charge applies to all properties and developments abutting and connecting to the water main along Jennifer Lane from the Valley Creek Crossing 2nd Addition to Wood Duck Trail.

The charge is to be collected at the time of connection to the public watermain or the recording of a final plat for a development utilizing the water main, whichever is earlier.

(SPU Resolution #1190)

Maras Street, 13th Avenue, Stagecoach Road, Hansen Avenue Water Main**\$14,199.52/acre**

This charge applies to all properties and developments abutting and connecting to the water main along Maras Street, Hansen Avenue from Stagecoach Road to Maras Street, 13th Avenue, and the east side of Stagecoach Road from 13th Avenue to Hansen Avenue.

The charge is to be collected at the time of connection to the public watermain, the recording of a final plat for a development utilizing the water main, failure of septic or well systems, or sale of the property, whichever is earlier. The typical annual cost escalation for this charge will begin on January 3, 2026.

Additional connection timing and funding options are listed in the attachments to the resolution.

(SPU Resolution #2023-23)

CSAH 17 Water Main County Project 17-31**\$8,227.55/acre**

This charge applies to all properties and developments abutting and connecting to the water main along CSAH17 from Valley View Road to approximately 800ft north of Valley View Road.

The charge is to be collected at the time of connection to the public watermain or the recording of a final plat for a development utilizing the water main, whichever is earlier.

(SPU Resolution #2023-30)

West End Lower Bluff Water Main**\$9,251.15/acre**

This charge applies to all properties and developments abutting and connecting to the water main along the east side Old Brick Yard Road from Colburn Drive to the Highway 169 northbound ramp, and along the south side of Highway 169 from Old Brickyard Road to Outlot A in the Windermere Plat.

The charge is to be collected at the time of connection to the public watermain or the recording of a final plat for a development utilizing the water main, whichever is earlier.

(SPU Resolution #2024-03)